



High Street, £100,000

- Three Bedroom
- Cottage Style
- Rear Garden
- No chain
- Ideal First Time Buy / Buy To Let
- EPC Rating: D



3 1 1



About the property

A well presented three bedroom terraced cottage for sale with no on-going chain. Benefiting from attractive views, a first floor shower room and a rear garden. Situation in the quiet semi-rural Village of Glynneath, with beautiful walks, pubs, schools and shops within close proximity.

Internally the property comprises of a lounge, kitchen and inner porch with storage to the ground floor. The first floor features three generous size bedrooms and a shower room. To the rear of the property there is an enclosed tier garden which has been well maintained.

Ideal first time buy or buy to let opportunity. Internal viewings come highly recommended.

Accommodation

Lounge

17' 9" max x 12' 3" max (5.41m max x 3.73m max)

Entrance via a upvc door to the front. Laminate flooring and a feature fireplace with an open fire behind. Stairs to the first floor with understair storage. Upvc window to the front and a door through to the kitchen.

Kitchen

17' 7" x 6' 8" (5.36m x 2.03m)

Fitted with a matching range of wall and base units with worktop space over and a stainless steel sink with a mixer tap. Fitted cooker hood with space for a cooker, fridge freezer, washing machine, tumble dryer and dish washer. Tiled flooring, two upvc windows to the rear and a door through to the inner porch.



Inner Porch

Laminate flooring, built in storage cupboard and a upvc door to the side.

Landing

Fitted carpets to the stairs and landing with doors through to three bedrooms and shower room.

Bedroom One

12' 2" x 8' 6" (3.71m x 2.59m)

Fitted carpets, upvc window to the front and fitted wardrobes. Restricted head height.

Bedroom Two

9' 2" max x 8' 8" max (2.79m max x 2.64m max)

Fitted carpets, upvc window to the front and built in storage cupboard over the stairs. Restricted head height.

Bedroom Three

7' 9" max x 7' 9" (2.36m max x 2.36m)

Fitted carpets and a upvc window to the rear.

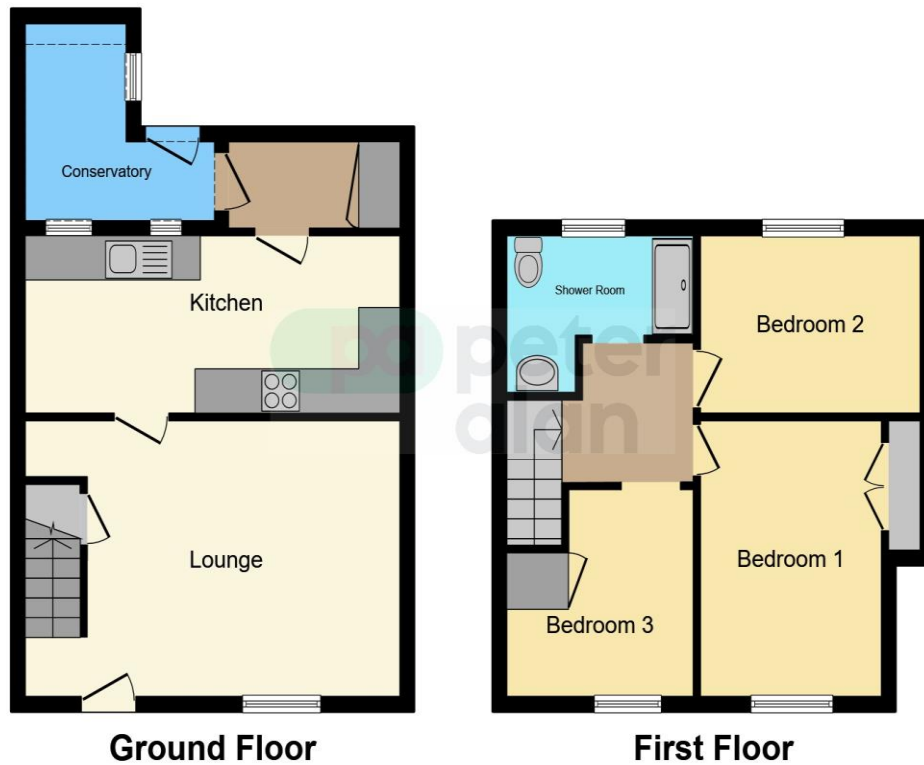
Shower Room

Fitted with a three piece suite comprising of a shower cubical with double shower head, a w.c and a wash hand basin. Vinyl flooring and tiled splashbacks. Wall mounted gas combination boiler and a upvc window with obscured glass to the rear.

Rear

Enclosed rear garden with steps leading to three tiers comprising of lawn, artificial lawn and mature shrubs.

Floorplan



This floorplan is for illustrative purposes only and is not drawn to scale. Measurements, floor-areas, openings and orientations are approximate. They should not be relied upon for any purpose and do not form any part of an agreement. No liability is taken for any error or mis-statement. All parties must rely on their own inspections.

Important Information

Note while we endeavour to make our sales details accurate and reliable, if there is any point which is of particular interest to you, please contact the office and we will be pleased to confirm the position for you. We have not personally tested any apparatus, equipment, fixtures, fittings or services and cannot verify they are in working order or fit for their purposes. Nothing in these particulars is intended to indicate that carpets or curtains, furnishings or fittings, electrical goods (whether wired or not). Gas fires or light fittings or any other fixtures not expressly included form part of the property offered for sale. This computer generated Floorplan, if applicable, is intended as a general guide to the layout and design of the property. It is not to scale and should not be relied upon for dimensions. Tenure: We cannot confirm the tenure of the property as we have not had access to the legal documents. The buyer is advised to obtain verification from their solicitor or surveyor.

Peter Alan Limited is registered in England and Wales under company number 2073153, Registered Office is Cumbria House, 16-20 Hockliffe Street, Leighton Buzzard, Bedfordshire, LU7 1GN. VAT Registration Number is 500 2481 05. For activities relating to regulated mortgages and non-investment insurance contracts, Peter Alan Limited is an appointed representative of Connells Limited which is authorised and regulated by the Financial Conduct Authority. Connells Limited's Financial Services Register number is 302221. Most buy-to-let