



Edith Mills Close

£90,000

- Sought After Modern Development
- Allocated Parking Space
- Recently Refurbished
- Ideal First Time Purchase
- Convenient Location for Commuters
- EPC Rating: Awaited



 2  2  1



About the property

A very well presented, ideal first time purchase, now available for sale with no on going chain within Britton Ferry! Conveniently located for commuters with excellent links to the M4 corridor via the A465 and public transport using frequently running buses or the main line train station within Neath Town Centre! There is also Nature Reserve within the Estate, perfect for those quick evening walks!

The purpose built block is approached through the communal & allocated parking found to the front. A secure door leads into the shared hallway & landing leading to the property! Internally, the home comprises of an entrance hallway, with two sizable store cupboards and doors through to the living area, broken into a kitchen, with fitted breakfast bar, and double aspect reception space. To the rear of the home is both double bedrooms, were the master features an en-suite shower room, with the main family bathroom opposite! Internal viewings are highly recommended!

Accommodation

Communal Hallway

Entrance Hallway

Kitchen / Lounge

22' 3" x 10' 8" Max (6.78m x 3.25m Max)



Bedroom One

13' 1" Max x 9' 6" (3.99m Max x 2.90m)

En-Suite

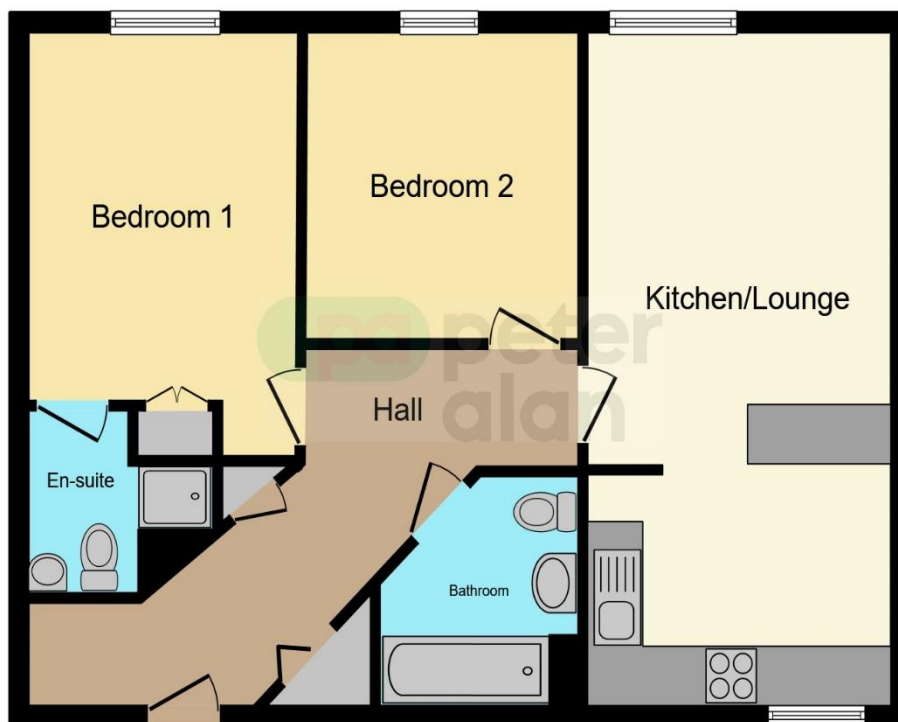
Bedroom Two

9' 8" x 7' 5" (2.95m x 2.26m)

Bathroom

Allocated Parking

Floorplan



This floor plan is for illustrative purposes only. It is not drawn to scale. Any measurements, floor areas (including any total floor area), openings and orientation are approximate. No details are guaranteed, they cannot be relied upon for any purpose and they do not form part of any agreement. No liability is taken for any error, omission or misstatement. A party must rely upon its own inspection(s). Powered by www.focalagent.com

Important Information

Note while we endeavour to make our sales details accurate and reliable, if there is any point which is of particular interest to you, please contact the office and we will be pleased to confirm the position for you. We have not personally tested any apparatus, equipment, fixtures, fittings or services and cannot verify they are in working order or fit for their purposes. Nothing in these particulars is intended to indicate that carpets or curtains, furnishings or fittings, electrical goods (whether wired or not). Gas fires or light fittings or any other fixtures not expressly included form part of the property offered for sale. This computer generated Floorplan, if applicable, is intended as a general guide to the layout and design of the property. It is not to scale and should not be relied upon for dimensions. Tenure: We cannot confirm the tenure of the property as we have not had access to the legal documents. The buyer is advised to obtain verification from their solicitor or surveyor.

Peter Alan Limited is registered in England and Wales under company number 2073153, Registered Office is Cumbria House, 16-20 Hockliffe Street, Leighton Buzzard, Bedfordshire, LU7 1GN. VAT Registration Number is 500 2481 05. For activities relating to regulated mortgages and non-investment insurance contracts, Peter Alan Limited is an appointed representative of Connells Limited which is authorised and regulated by the Financial Conduct Authority. Connells Limited's Financial Services Register number is 302221. Most buy-to-let