



Geraint Jeremiah

£80,000

- First Floor Flat
- One Double Bedroom
- Juliet Balcony
- Council Tax: B
- Allocated Parking Space
- EPC Rating: B





About the property

A low maintenance, one bedroom, first floor flat for sale with no on-going chain and attractive views. Ideal buy to let or first time buy, situated within a sought after, modern development with an allocated parking space to the front of the property. Conveniently located to local schools, shops and public transport links and just a short drive into Neath Town Centre with all its amenities. Internally the property comprises of an entrance hall with two storage cupboards, an open plan lounge kitchen with upvc double doors leading onto a Juliet balcony, a double bedroom and a bathroom. Internal viewings come highly recommended.

Accommodation

Entrance Hall

Entrance via a door to the side with fitted carpets, x2 storage cupboards - one of which houses the hot water tank and doors leading through to the bathroom, bedroom and lounge.

Lounge And Kitchen

22' 1" max x 11' 3" max (6.73m max x 3.43m max)

Open plan lounge and kitchen area. Lounge area fitted with carpets and upvc double doors onto the Juliet balcony. Kitchen area fitted with a matching range of wall and base units with worktop space over and 1 1/5 stainless steel sinks with a mixer tap. Integrated oven, hob and cooker hood with space for a washing machine and fridge freezer. Vinyl flooring and tiled splashbacks and a upvc window to the rear.



Bedroom One

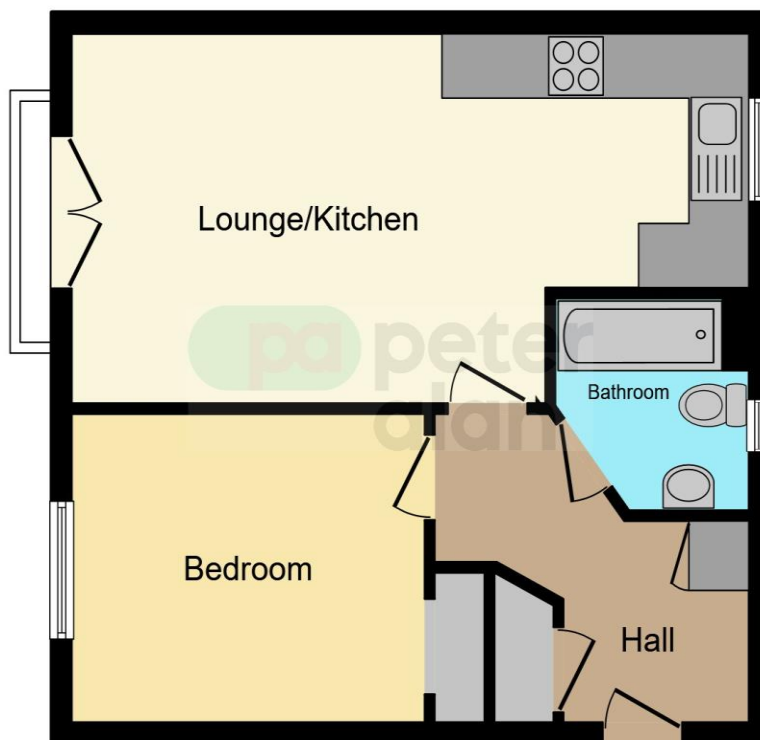
11' 6" min x 9' 5" (3.51m min x 2.87m)

Fitted carpets and built in wardrobe area. Upvc window to the front.

Bathroom

Fitted with a three piece suite comprising of a bath with a mixer tap and shower over, a w.c and wash hand basin with a mixer tap. Vinyl flooring and tiled splashbacks. Upvc window with obscured glass to the rear.

Floorplan



This floorplan is for illustrative purposes only and is not drawn to scale. Measurements, floor-areas, openings and orientations are approximate. They should not be relied upon for any purpose and do not form any part of an agreement. No liability is taken for any error or mis-statement. All parties must rely on their own inspections.

Important Information

Note while we endeavour to make our sales details accurate and reliable, if there is any point which is of particular interest to you, please contact the office and we will be pleased to confirm the position for you. We have not personally tested any apparatus, equipment, fixtures, fittings or services and cannot verify they are in working order or fit for their purposes. Nothing in these particulars is intended to indicate that carpets or curtains, furnishings or fittings, electrical goods (whether wired or not). Gas fires or light fittings or any other fixtures not expressly included form part of the property offered for sale. This computer generated Floorplan, if applicable, is intended as a general guide to the layout and design of the property. It is not to scale and should not be relied upon for dimensions. Tenure: We cannot confirm the tenure of the property as we have not had access to the legal documents. The buyer is advised to obtain verification from their solicitor or surveyor.

Peter Alan Limited is registered in England and Wales under company number 2073153, Registered Office is Cumbria House, 16-20 Hockliffe Street, Leighton Buzzard, Bedfordshire, LU7 1GN. VAT Registration Number is 500 2481 05. For activities relating to regulated mortgages and non-investment insurance contracts, Peter Alan Limited is an appointed representative of Connells Limited which is authorised and regulated by the Financial Conduct Authority. Connells Limited's Financial Services Register number is 302221. Most buy-to-let