



Herbert Road

£55,000

- Council Tax Band - B
- Potential To Purchase With A Long Standing Tenant In Sit-U
- End Terraced
- Enclosed Rear Garden
- Renovation Opportunity
- EPC Rating: G



3 1 1



About the property

Investment opportunity, with the potential to purchase with a long standing tenant in sit-u. A three double bedroom, end of terraced property for sale with no on-going chain. Conveniently located to local schools, shops and public transport links, making it an ideal spot for family's and commuters. Internally comprising of an entrance hall, a spacious lounge diner, a kitchen, utility room and four piece bathroom suite to the ground floor. The first floor features three double bedrooms and to the rear there is an enclosed garden. The property offers a huge amount of potential to become a lovely, generous sized home. Internal viewings recommended.

Accommodation

Entrance Hall

Lounge/Diner

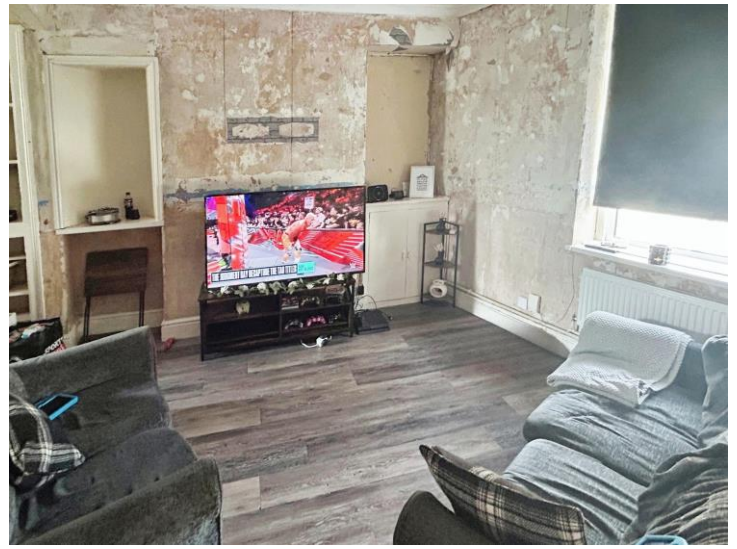
21' 6" Max x 11' 3" Max (6.55m Max x 3.43m Max)

Kitchen

14' 2" x 9' 2" (4.32m x 2.79m)

Utility Room

9' 2" x 7' 2" (2.79m x 2.18m)



Bathroom

Ground floor, four piece bathroom.

Landing

Bedroom One

14' 4" x 10' 7" (4.37m x 3.23m)

Bedroom Two

13' 7" x 6' 3" (4.14m x 1.91m)

Bedroom Three

10' 3" x 8' 6" (3.12m x 2.59m)

Rear Garden

Enclosed

01639 635115
neath@peteralan.co.uk



Floorplan

Important Information

Note while we endeavour to make our sales details accurate and reliable, if there is any point which is of particular interest to you, please contact the office and we will be pleased to confirm the position for you. We have not personally tested any apparatus, equipment, fixtures, fittings or services and cannot verify they are in working order or fit for their purposes. Nothing in these particulars is intended to indicate that carpets or curtains, furnishings or fittings, electrical goods (whether wired or not), Gas fires or light fittings or any other fixtures not expressly included form part of the property offered for sale. This computer generated Floorplan, if applicable, is intended as a general guide to the layout and design of the property. It is not to scale and should not be relied upon for dimensions. Tenure: We cannot confirm the tenure of the property as we have not had access to the legal documents. The buyer is advised to obtain verification from their solicitor or surveyor.

Peter Alan Limited is registered in England and Wales under company number 2073153, Registered Office is Cumbria House, 16-20 Hockliffe Street, Leighton Buzzard, Bedfordshire, LU7 1GN. VAT Registration Number is 500 2481 05. For activities relating to regulated mortgages and non-investment insurance contracts, Peter Alan Limited is an appointed representative of Connells Limited which is authorised and regulated by the Financial Conduct Authority. Connells Limited's Financial Services Register number is 302221. Most buy-to-let

