



Alderwood Close

£280,000

- Beautifully Presented Throughout
- Spacious Layout
- Driveway
- Council Tax Band - C
- 3/4 Bedroom Home
- EPC Rating: C



 4  2  3



About the property

The perfect first time purchase of family home! This deceptively sizable three/four bedroom, detached property is nestled into an incredibly sought after street in the popular village of Crynant. With excellent access to local amenities including stores and primary schools, great links to the M4 corridor via the A465 and access to Neath Town Centre with a mainline trainstation and regular running buses. The home is approached via a gated lawned garden to the front or driveway to the rear, with double upvc doors leading into the entrance hallway. There are doors leading through to a dining room, with a fitted bar, a study and sun room, the kitchen / lounge and the converted garage space functionally used as a forth bedroom with a walk-in wardrobe. Stairs lead up to the landing with three double bedrooms and a modern fitted, three piece suite bathroom. Internal viewings are highly recommended to truly appreciate the home!

Accommodation

Entrance Hallway

Shower Room

Kitchen / Lounge

10' 9" x 9' 8" (3.28m x 2.95m)

Dining Room

12' x 11' 5" (3.66m x 3.48m)

Study

10' 6" x 9' MAX (3.20m x 2.74m MAX)



Sun Room

16' x 8' (4.88m x 2.44m)

Bedroom Three/Reception Room

13' 1" x 7' 9" (3.99m x 2.36m)

Landing

Bedroom One

12' 3" x 10' 1" (3.73m x 3.07m)

Bedroom Two

9' 1" x 7' 9" Max (2.77m x 2.36m Max)

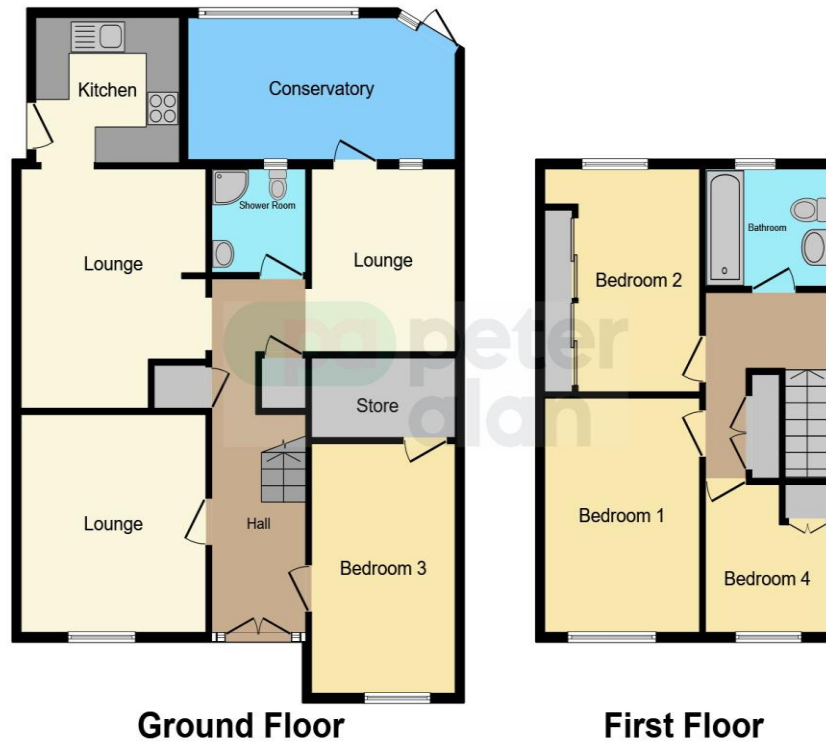
Bedroom Four

11' 2" x 8' 3" (3.40m x 2.51m)

Bathroom

Front & Rear Gardens

Floorplan



This floor plan is for illustrative purposes only. It is not drawn to scale. Any measurements, floor areas (including any total floor area), openings and orientation are approximate. No details are guaranteed, they cannot be relied upon for any purpose and they do not form part of any agreement. No liability is taken for any error, omission or misstatement. A party must rely upon its own inspection(s). Powered by www.focalagent.com

Important Information

Note while we endeavour to make our sales details accurate and reliable, if there is any point which is of particular interest to you, please contact the office and we will be pleased to confirm the position for you. We have not personally tested any apparatus, equipment, fixtures, fittings or services and cannot verify they are in working order or fit for their purposes. Nothing in these particulars is intended to indicate that carpets or curtains, furnishings or fittings, electrical goods (whether wired or not), Gas fires or light fittings or any other fixtures not expressly included form part of the property offered for sale. This computer generated Floorplan, if applicable, is intended as a general guide to the layout and design of the property. It is not to scale and should not be relied upon for dimensions. Tenure: We cannot confirm the tenure of the property as we have not had access to the legal documents. The buyer is advised to obtain verification from their solicitor or surveyor.

Peter Alan Limited is registered in England and Wales under company number 2073153, Registered Office is Cumbria House, 16-20 Hockliffe Street, Leighton Buzzard, Bedfordshire, LU7 1GN. VAT Registration Number is 500 2481 05. For activities relating to regulated mortgages and non-investment insurance contracts, Peter Alan Limited is an appointed representative of Connells Limited which is authorised and regulated by the Financial Conduct Authority. Connells Limited's Financial Services Register number is 302221. Most buy-to-let