



Manor Way, £200,000

- No Chain!
- Deceptively Spacious
- Lovingly Maintained
- Council Tax Band C
- Attic Conversion
- EPC Rating: D



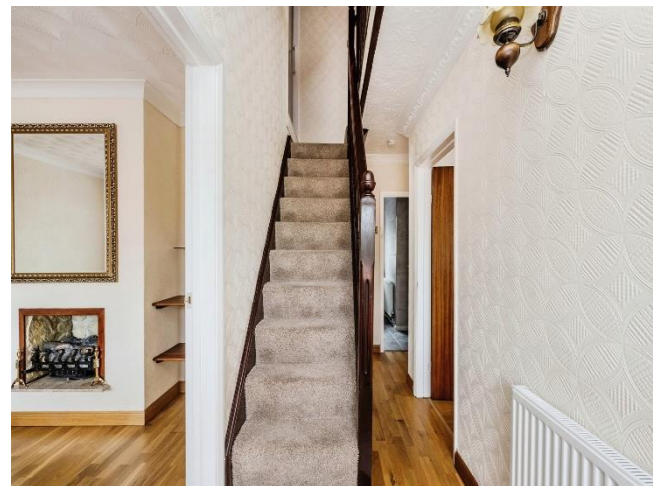
2 1 3

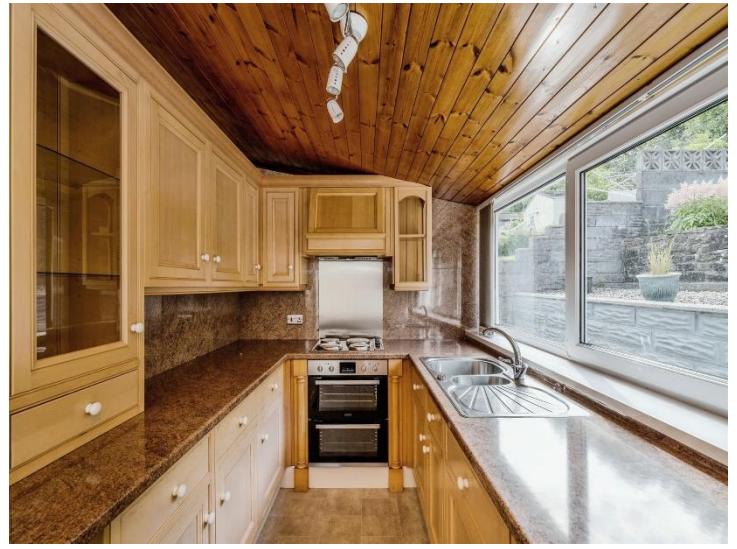


About the property

The ideal first-time purchase or for those looking to downsize! This well presented, two-bedroom semi-detached bungalow is now available for sale with no on-going chain! Neighbouring Briton Ferry Woods, with fantastic links to the M4 corridor, Neath Town Centre, public transport (by rail or bus) and well-regarded local schools!

The home is approached via a gated and low maintenance front garden, with side access into the rear, where you will find well maintained flower beds, patches of stone chipping's, a summer house and sizable garage for off street parking. There is also a patio area to the summit of the garden, where the views over Neath are best enjoyed. Internally, the property comprises of an entrance hallway, two double bedrooms, stairs to a converted attic room, a modern shower room, dining room which leads into the fitted kitchen and lounge which leads into the conservatory.





Accommodation

Entrance Hallway

Lounge

11' 3" x 11' 1" (3.43m x 3.38m)

Dining Room

11' 2" x 9' 2" +Recess (3.40m x 2.79m +Recess)

Conservatory

7' 8" x 7' 4" (2.34m x 2.24m)

Kitchen

11' 1" x 7' 6" (3.38m x 2.29m)

Bedroom One

11' 5" +Wardrobes x 9' 4" (3.48m +Wardrobes x 2.84m)

Bedroom Two

11' 3" x 11' 1" (3.43m x 3.38m)

Shower Room

Attic Room

16' 1" x 11' 7" (4.90m x 3.53m)

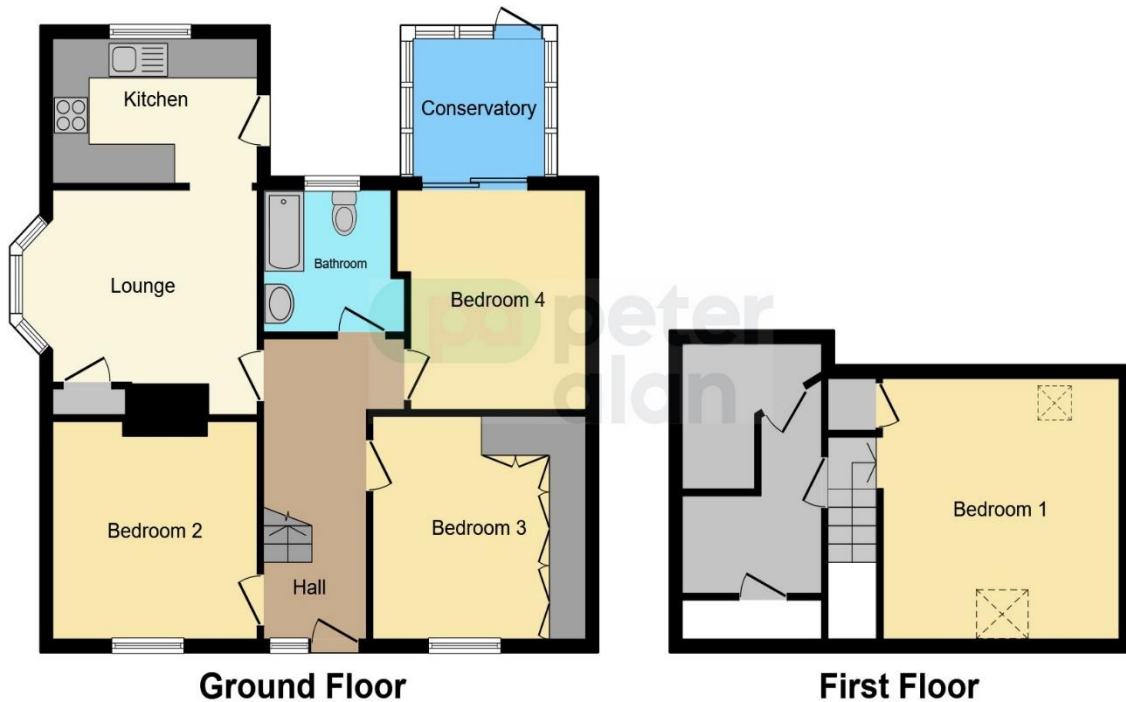
This room has restricted head height

Front & Rear Gardens

Garage

19' x 12' 1" (5.79m x 3.68m)

Floorplan



This floor plan is for illustrative purposes only. It is not drawn to scale. Any measurements, floor areas (including any total floor area), openings and orientation are approximate. No details are guaranteed, they cannot be relied upon for any purpose and they do not form part of any agreement. No liability is taken for any error, omission or misstatement. A party must rely upon its own inspection(s). Powered by www.focalagent.com

Important Information

Note while we endeavour to make our sales details accurate and reliable, if there is any point which is of particular interest to you, please contact the office and we will be pleased to confirm the position for you. We have not personally tested any apparatus, equipment, fixtures, fittings or services and cannot verify they are in working order or fit for their purposes. Nothing in these particulars is intended to indicate that carpets or curtains, furnishings or fittings, electrical goods (whether wired or not). Gas fires or light fittings or any other fixtures not expressly included form part of the property offered for sale. This computer generated Floorplan, if applicable, is intended as a general guide to the layout and design of the property. It is not to scale and should not be relied upon for dimensions. Tenure: We cannot confirm the tenure of the property as we have not had access to the legal documents. The buyer is advised to obtain verification from their solicitor or surveyor.

Peter Alan Limited is registered in England and Wales under company number 2073153, Registered Office is Cumbria House, 16-20 Hockliffe Street, Leighton Buzzard, Bedfordshire, LU7 1GN. VAT Registration Number is 500 2481 05. For activities relating to regulated mortgages and non-investment insurance contracts, Peter Alan Limited is an appointed representative of Connells Limited which is authorised and regulated by the Financial Conduct Authority. Connells Limited's Financial Services Register number is 302221. Most buy-to-let