



## Mackworth Drive, offers in the region of £185,000

- Three Double Bedrooms
- Enclosed Rear Garden and Driveway to Front
- Lounge and Kitchen Diner
- Council Tax Band - C
- Ideal Family Home
- EPC Rating: C



 3  1  2





## About the property

A well presented, modern family home in a popular and quiet area of Cimla. The property benefits from an enclosed rear garden comprising of a patio space with a shed and a generous lawn accessed via the kitchen or a gate to the side from the driveway with a lawn and mature shrubby to the front also. Internally, the property is light and airy with laminate flooring throughout the ground floor and sliding doors separating the kitchen diner and lounge. Integrated appliances such as a cooker and hob are found in the kitchen alongside a breakfast bar and patio doors to the rear. Multiple bedrooms boast built in wardrobes with all three being suitable for a double bed. The property is conveniently located for access to local shops within Neath Town Centre, local schools such as Cefn Saeson Comprehensive School and access to bus routes. Internal viewings are highly recommended.







## Accommodation

### Entrance Hall

### Lounge

13' 6" x 12' ( 4.11m x 3.66m )

### Kitchen/ Diner

15' 7" x 10' 4" ( 4.75m x 3.15m )

### Landing

### Bedroom One

13' 4" x 8' 5" ( 4.06m x 2.57m )

### Bedroom Two

9' 2" x 9' 2" ( 2.79m x 2.79m )

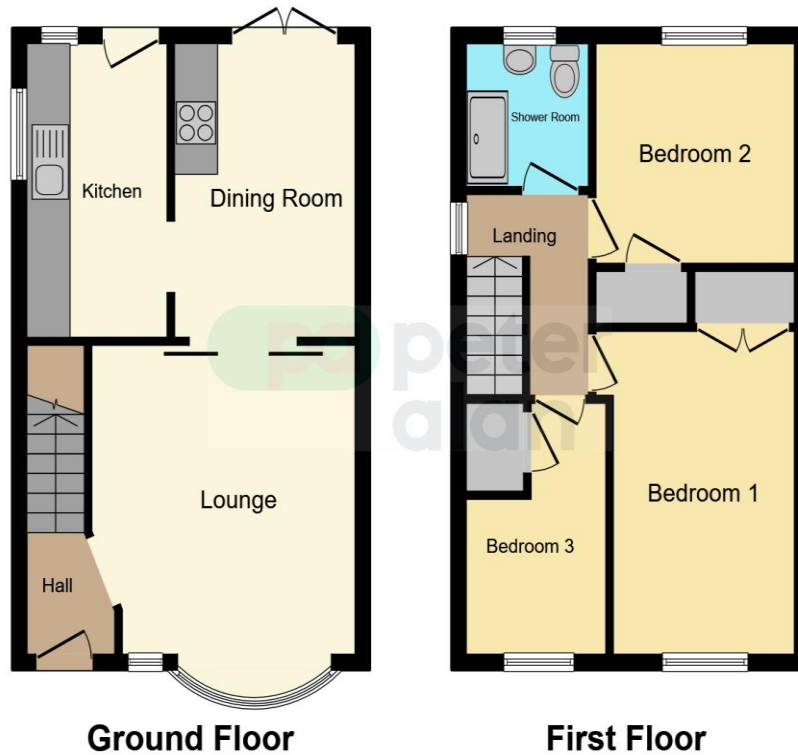
### Bedroom Three

10' 7" x 6' 7" ( 3.23m x 2.01m )

### Shower Room

### Front & Rear Gardens

## Floorplan



This floorplan is for illustrative purposes only and is not drawn to scale. Measurements, floor-areas, openings and orientations are approximate. They should not be relied upon for any purpose and do not form any part of an agreement. No liability is taken for any error or mis-statement. All parties must rely on their own inspections.

## Important Information

Note while we endeavour to make our sales details accurate and reliable, if there is any point which is of particular interest to you, please contact the office and we will be pleased to confirm the position for you. We have not personally tested any apparatus, equipment, fixtures, fittings or services and cannot verify they are in working order or fit for their purposes. Nothing in these particulars is intended to indicate that carpets or curtains, furnishings or fittings, electrical goods (whether wired or not). Gas fires or light fittings or any other fixtures not expressly included form part of the property offered for sale. This computer generated Floorplan, if applicable, is intended as a general guide to the layout and design of the property. It is not to scale and should not be relied upon for dimensions. Tenure: We cannot confirm the tenure of the property as we have not had access to the legal documents. The buyer is advised to obtain verification from their solicitor or surveyor.

Peter Alan Limited is registered in England and Wales under company number 2073153, Registered Office is Cumbria House, 16-20 Hockliffe Street, Leighton Buzzard, Bedfordshire, LU7 1GN. VAT Registration Number is 500 2481 05. For activities relating to regulated mortgages and non-investment insurance contracts, Peter Alan Limited is an appointed representative of Connells Limited which is authorised and regulated by the Financial Conduct Authority. Connells Limited's Financial Services Register number is 302221. Most buy-to-let