



Tregelles Road

offers over **£100,000**

- Generous Sized 2 Bedroom Maisonette
- Rooms Split across Three Floors
- Ideal First Time Purchase
- Council Tax A
- Front and Rear Gardens
- EPC Rating: D



 2  1  2



About the property

The ideal first time buy or great for investors! This well presented Maisonette is perfectly located for commuters with great links to the M4 corridor via the A465, with regular running buses nearby and a main line train station within Neath Town Centre. Also conveniently situated for access to well renowned local schools including Abbey Primary School, Neath College and Dwr Y Felin Comprehensive. The home is approached by a footpath in the front garden with a door to the entrance hallway that opens to a space with potential for a utility area and an exit to the rear garden. Stairs lead up to the first floor landing with a spacious lounge, fitted kitchen, bathroom, master bedroom and 'through room' best used as a dining space with a second flight of stairs into the attic room or bedroom 2.

Accommodation

Entrance Hallway & Landing

Lounge

15' 4" x 12' (4.67m x 3.66m)

Dining Room

11' 8" x 11' 6" (3.56m x 3.51m)

Kitchen

9' 3" x 8' 6" (2.82m x 2.59m)



Bedroom 1

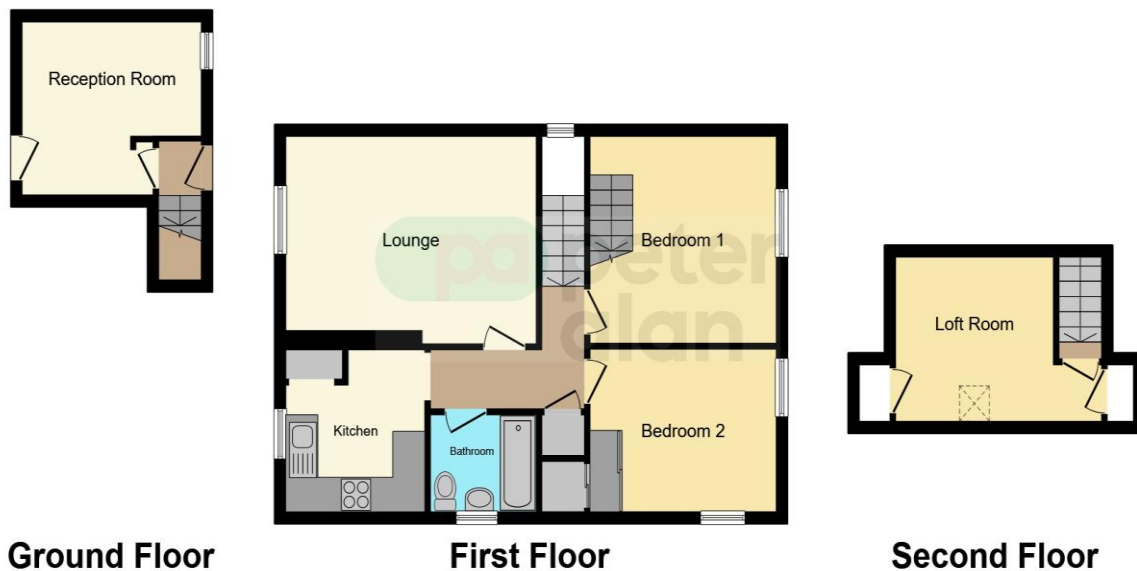
11' 6" x 9' 5" (3.51m x 2.87m)

Bedroom 2

12' 7" x 9' 4" (3.84m x 2.84m)

Front & Rear Gardens

Floorplan



This floor plan is for illustrative purposes only. It is not drawn to scale. Any measurements, floor areas (including any total floor area), openings and orientation are approximate. No details are guaranteed, they cannot be relied upon for any purpose and they do not form part of any agreement. No liability is taken for any error, omission or misstatement. A party must rely upon its own inspection(s). Powered by www.focalagent.com

Important Information

Note while we endeavour to make our sales details accurate and reliable, if there is any point which is of particular interest to you, please contact the office and we will be pleased to confirm the position for you. We have not personally tested any apparatus, equipment, fixtures, fittings or services and cannot verify they are in working order or fit for their purposes. Nothing in these particulars is intended to indicate that carpets or curtains, furnishings or fittings, electrical goods (whether wired or not). Gas fires or light fittings or any other fixtures not expressly included form part of the property offered for sale. This computer generated Floorplan, if applicable, is intended as a general guide to the layout and design of the property. It is not to scale and should not be relied upon for dimensions. Tenure: We cannot confirm the tenure of the property as we have not had access to the legal documents. The buyer is advised to obtain verification from their solicitor or surveyor.

Peter Alan Limited is registered in England and Wales under company number 2073153, Registered Office is Cumbria House, 16-20 Hockliffe Street, Leighton Buzzard, Bedfordshire, LU7 1GN. VAT Registration Number is 500 2481 05. For activities relating to regulated mortgages and non-investment insurance contracts, Peter Alan Limited is an appointed representative of Connells Limited which is authorised and regulated by the Financial Conduct Authority. Connells Limited's Financial Services Register number is 302221. Most buy-to-let