



## Ridgewood Gardens, £290,000

- Spacious Corner Plot
- Driveway and Garage
- Conservatory, Study and Lounge/Diner
- Council Tax Band - E
- Ground Floor Cloakroom
- EPC Rating: D



3 1 3



## About the property

An ideal family home situated within a quiet and sought after area of Cimla. Positioned on a corner plot, with lawns stretching through the front and side gardens and a separate enclosed garden to the rear. The property is accessed via an entrance porch to the front with a spacious lounge to the right and sitting room to the rear boasting a total of four reception areas and a cloakroom. Most of the property's bedrooms feature fitted wardrobe with desirable partial views over Neath Valley.

Conveniently located for access to Neath Town Centre, bus routes, train stations, shops, well regarded schools such as Cefn Saeson Comprehensive School and great links for commuter access to the M4 Corridor. Internal viewings are required to truly appreciate the property.



## Accommodation

### Entrance Porch

### Entrance Hall

### Cloakroom

### Lounge

11' 8" x 16' 7" ( 3.56m x 5.05m )

### Dining Room

11' 4" x 8' 6" ( 3.45m x 2.59m )

### Reception Room

8' 6" x 8' 8" ( 2.59m x 2.64m )

### Kitchen

12' x 11' 6" ( 3.66m x 3.51m )

### Conservatory

9' 4" x 8' 5" ( 2.84m x 2.57m )

### Landing

### Bedroom One

11' 9" x 11' 2" ( 3.58m x 3.40m )

### Bedroom Two

14' 2" x 8' 9" ( 4.32m x 2.67m )

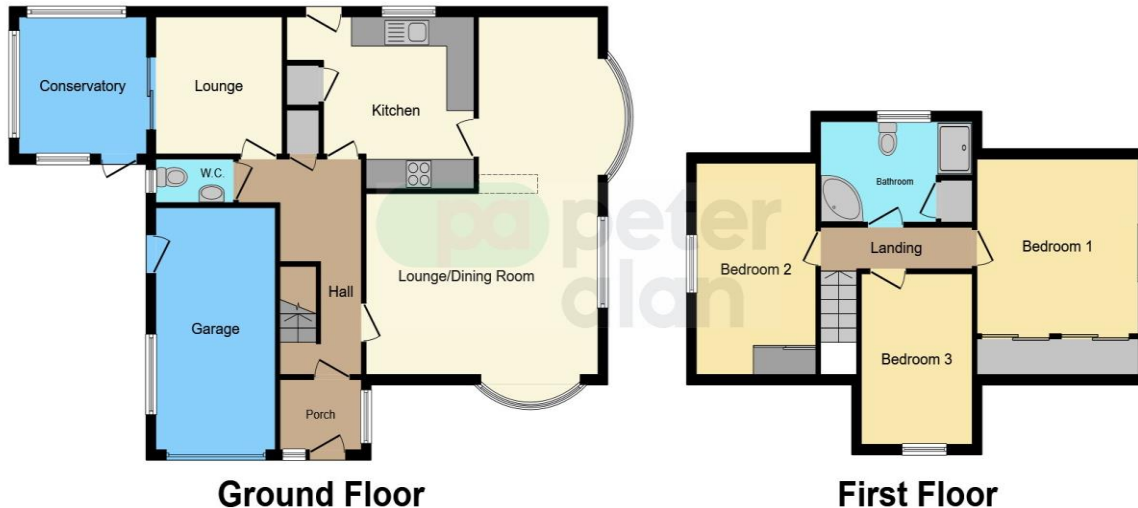
### Bedroom Three

11' 4" x 6' 4" ( 3.45m x 1.93m )

### Bathroom

### Front & Rear Gardens

## Floorplan



This floorplan is for illustrative purposes only and is not drawn to scale. Measurements, floor-areas, openings and orientations are approximate. They should not be relied upon for any purpose and do not form any part of an agreement. No liability is taken for any error or mis-statement. All parties must rely on their own inspections.

## Important Information

Note while we endeavour to make our sales details accurate and reliable, if there is any point which is of particular interest to you, please contact the office and we will be pleased to confirm the position for you. We have not personally tested any apparatus, equipment, fixtures, fittings or services and cannot verify they are in working order or fit for their purposes. Nothing in these particulars is intended to indicate that carpets or curtains, furnishings or fittings, electrical goods (whether wired or not). Gas fires or light fittings or any other fixtures not expressly included form part of the property offered for sale. This computer generated Floorplan, if applicable, is intended as a general guide to the layout and design of the property. It is not to scale and should not be relied upon for dimensions. Tenure: We cannot confirm the tenure of the property as we have not had access to the legal documents. The buyer is advised to obtain verification from their solicitor or surveyor.

Peter Alan Limited is registered in England and Wales under company number 2073153, Registered Office is Cumbria House, 16-20 Hockliffe Street, Leighton Buzzard, Bedfordshire, LU7 1GN. VAT Registration Number is 500 2481 05. For activities relating to regulated mortgages and non-investment insurance contracts, Peter Alan Limited is an appointed representative of Connells Limited which is authorised and regulated by the Financial Conduct Authority. Connells Limited's Financial Services Register number is 302221. Most buy-to-let