



pa peter alan
Ar Werth
01639 635115

Jubilee Crescent, offers over £170,000

- Three Bedroom Semi Detached
- Ideal First Time Purchase
- Driveway for Three Vehicles
- Council Tax B
- Front, Rear and Side Garden
- EPC Rating: D



3 1 1

pa peter alan

01639 635115
neath@peteralan.co.uk



About the property

This three bedroom, semi-detached house in Skewen with a garage and off-street parking for up to three vehicles is a perfect family or first time home. Comprising of a lounge diner, modern kitchen and bathroom to the ground floor situated within close proximity to local amenities and the M4 corridor

Accommodation

Entrance Hall

Laminate, entrance via UPVC door to front access to stairs, door to lounge and kitchen.

Inner Hall

Tiled, UPVC door to side garden, door to bathroom.

Lounge

17' 4" x 10' 9" max (5.28m x 3.28m max)

Laminate, UPVC patio to rear and window to front.



Kitchen

11' 5" x 10' 5" (3.48m x 3.17m)

Fitted with matching range of wall and base units with work top space over. Stainless steel sink with mixer, intergrated cooker hob, hood, space for washing machine, fridge freezer, tiled walls and floor. Door to inner hall, storage cupboard under stairs.

Landing

Carpet iron stairs, doors to 3 bedrooms, UPVC to front, Access to loft.

Bedroom 1

10' 9" x 8' 2" (3.28m x 2.49m)

Laminate, UPVC to rear, cupboard with wall mounted combi.

Bedroom 2

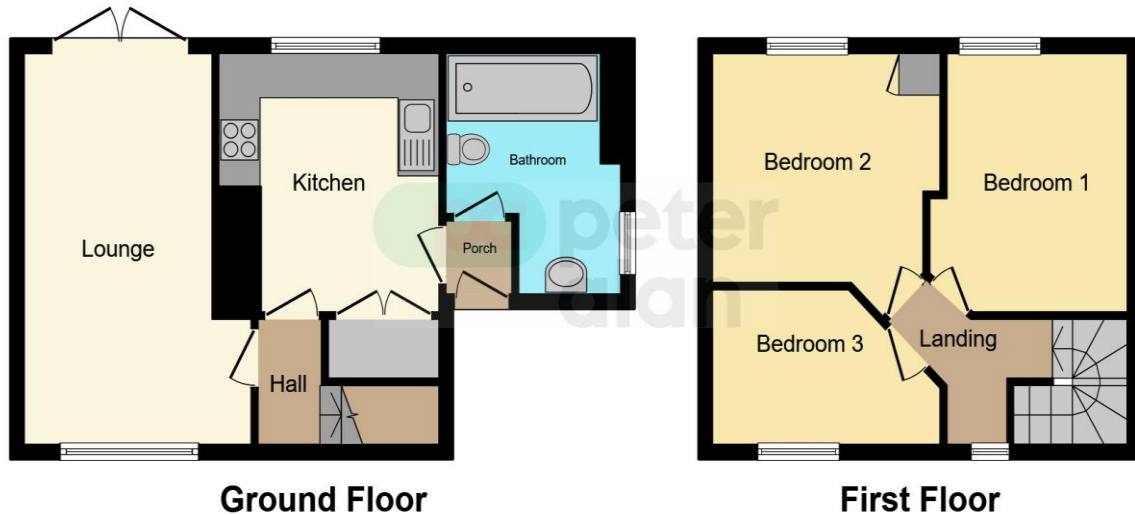
11' 5" x 8' 8" (3.48m x 2.64m)

laminate, UPVC to rear.

Bedroom 3

10' 9" x 7' 8" (3.28m x 2.34m)

Floorplan



This floorplan is for illustrative purposes only and is not drawn to scale. Measurements, floor-areas, openings and orientations are approximate. They should not be relied upon for any purpose and do not form any part of an agreement. No liability is taken for any error or mis-statement. All parties must rely on their own inspections.

Important Information

Note while we endeavour to make our sales details accurate and reliable, if there is any point which is of particular interest to you, please contact the office and we will be pleased to confirm the position for you. We have not personally tested any apparatus, equipment, fixtures, fittings or services and cannot verify they are in working order or fit for their purposes. Nothing in these particulars is intended to indicate that carpets or curtains, furnishings or fittings, electrical goods (whether wired or not). Gas fires or light fittings or any other fixtures not expressly included form part of the property offered for sale. This computer generated Floorplan, if applicable, is intended as a general guide to the layout and design of the property. It is not to scale and should not be relied upon for dimensions. Tenure: We cannot confirm the tenure of the property as we have not had access to the legal documents. The buyer is advised to obtain verification from their solicitor or surveyor.

Peter Alan Limited is registered in England and Wales under company number 2073153, Registered Office is Cumbria House, 16-20 Hockliffe Street, Leighton Buzzard, Bedfordshire, LU7 1GN. VAT Registration Number is 500 2481 05. For activities relating to regulated mortgages and non-investment insurance contracts, Peter Alan Limited is an appointed representative of Connells Limited which is authorised and regulated by the Financial Conduct Authority. Connells Limited's Financial Services Register number is 302221. Most buy-to-let