



Morgans Terrace, offers over £130,000

- No ongoing chain
- Situated Over Three Floors
- Stunning Views of the Cwmavon Valley
- Off Street Parking
- Viewing Highly Recommended
- EPC Rating: E



 3  1  1



About the property

Available with no ongoing chain is this three story family home with stunning views of the valley to the rear. Situated in a sought after location in Pontrhydyfen, this semi-detached home comprises hallway, open plan living room/diner with log burner, large kitchen with space for a range cooker, bathroom and possibility for utility room and three bedrooms. The property also boasts a driveway providing off street parking and side access to the rear garden. A viewing is highly recommended to fully appreciate all that this property has to offer.



Accommodation

Hallway

Entry through upvc door to front, access to living room and stairs up to first floor and down to basement

Lounge

11' 7" x 10' 4" (3.53m x 3.15m)

Hard wood flooring, log burner, window to rear

Sitting Room

11' 2" x 12' 4" (3.40m x 3.76m)

Hard wood flooring, window to front, open plan living/sitting room

Kitchen

13' x 13' 1" (3.96m x 3.99m)

Vinyl flooring, base units, farmhouse sink, range cooker, space for fridge/freezer, space for dining table, window to rear

Bathroom

Part tile, part vinyl flooring, shower, WC and sink. Ability to add utility room and separate the bathroom into another room.

Landing

Carpeted, window to rear

Bedroom One

12' 2" x 9' max into the wardrobe (3.71m x 2.74m max into the wardrobe)

Caret, fitted wardrobe around bed, window to front

Bedroom Two

10' 4" x 10' 8" (3.15m x 3.25m)

Carpet, window to rear

Bedroom Three

9' x 7' 1" (2.74m x 2.16m)

Carpet, window to rear

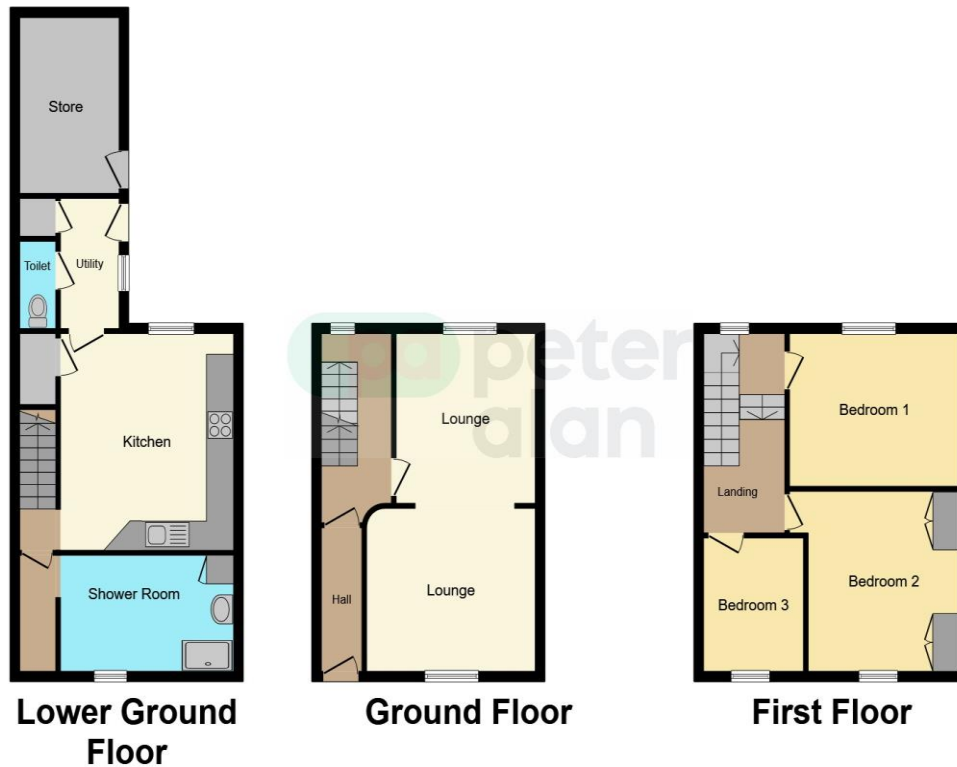
External

To the front there is a driveway with space for one car. The rear garden is tired with patio to the top and lawn on the bottom tier. The property boasts stunning views to the rear

01639 635115

neath@peteralan.co.uk

Floorplan



This floorplan is for illustrative purposes only and is not drawn to scale. Measurements, floor-areas, openings and orientations are approximate. They should not be relied upon for any purpose and do not form any part of an agreement. No liability is taken for any error or mis-statement. All parties must rely on their own inspections.

Important Information

Note while we endeavour to make our sales details accurate and reliable, if there is any point which is of particular interest to you, please contact the office and we will be pleased to confirm the position for you. We have not personally tested any apparatus, equipment, fixtures, fittings or services and cannot verify they are in working order or fit for their purposes. Nothing in these particulars is intended to indicate that carpets or curtains, furnishings or fittings, electrical goods (whether wired or not). Gas fires or light fittings or any other fixtures not expressly included form part of the property offered for sale. This computer generated Floorplan, if applicable, is intended as a general guide to the layout and design of the property. It is not to scale and should not be relied upon for dimensions. Tenure: We cannot confirm the tenure of the property as we have not had access to the legal documents. The buyer is advised to obtain verification from their solicitor or surveyor.

Peter Alan Limited is registered in England and Wales under company number 2073153, Registered Office is Cumbria House, 16-20 Hockliffe Street, Leighton Buzzard, Bedfordshire, LU7 1GN. VAT Registration Number is 500 2481 05. For activities relating to regulated mortgages and non-investment insurance contracts, Peter Alan Limited is an appointed representative of Connells Limited which is authorised and regulated by the Financial Conduct Authority. Connells Limited's Financial Services Register number is 302221. Most buy-to-let

