



## Commercial Street, £125,000

- Council Tax Band A
- No onward chain
- Low maintenance garden
- Beautiful views
- Ideal family home
- EPC Rating: E



 3
  1
  1





## About the property

A charming terraced house for sale, nestled in a location with excellent public transport links, nearby schools, local amenities, and walking routes. This property offers a perfect blend of modern living with the charm of a traditional terraced house. No onward chain.

The heart of the house is a well-appointed kitchen, offering a serene garden view. It provides direct access to the garden, seamlessly blending the interior and exterior spaces.

The property comprises three generously proportioned bedrooms and one bathroom, offering ample space for a growing family. Additionally, the house boasts one reception room, a perfect space for both entertaining and unwinding, offering a comfortable space for all occupants.

One of the unique features of this property is the garden, offering a haven of greenery and the opportunity to enjoy outdoor living. Coupled with the beautiful views, this outdoor space is sure to captivate any garden enthusiast.



## Accommodation

### Hall

### Living Room

13' 7" Max x 19' 7" Max ( 4.14m Max x 5.97m Max )

### Kitchen/Diner

8' 7" Max x 20' Max ( 2.62m Max x 6.10m Max )

### Landing

### Bathroom

### Bedroom 1

13' 8" Max x 10' 5" Max ( 4.17m Max x 3.17m Max )

### Bedroom 2

13' 8" Max x 6' 6" Max ( 4.17m Max x 1.98m Max )

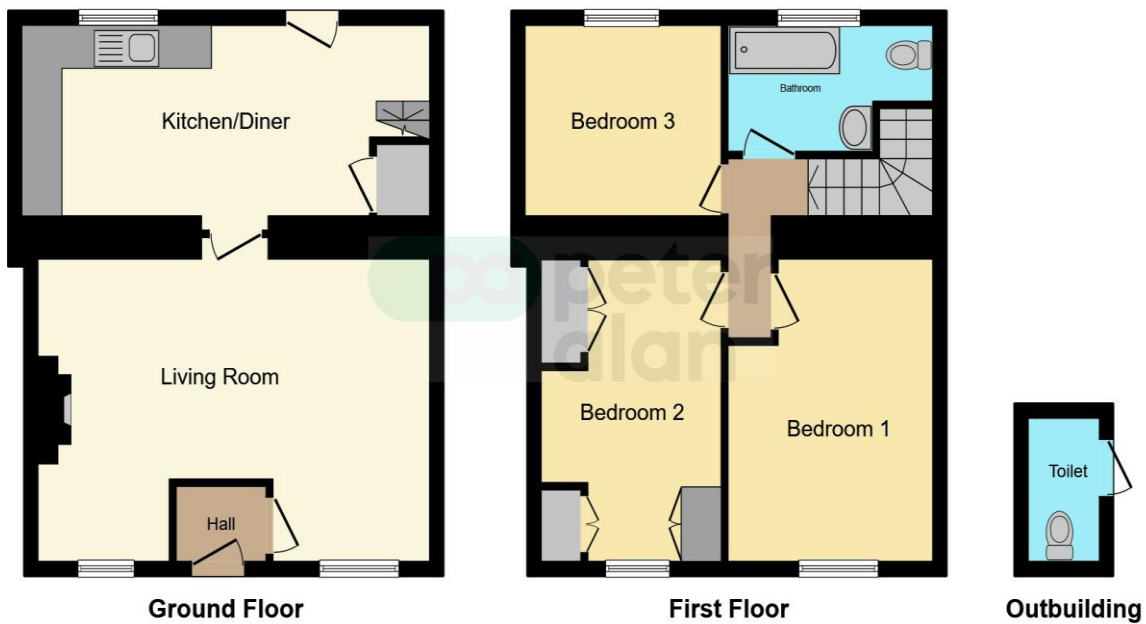
### Bedroom 3

8' 7" Max x 9' 6" Max ( 2.62m Max x 2.90m Max )

01685 722223

merthytydfil@peteralan.co.uk

## Floorplan



This floor plan is for illustrative purposes only. It is not drawn to scale. Any measurements, floor areas (including any total floor area), openings and orientation are approximate. No details are guaranteed, they cannot be relied upon for any purpose and they do not form part of any agreement. No liability is taken for any error, omission or misstatement. A party must rely upon its own inspection(s). Powered by [www.focalagent.com](http://www.focalagent.com)

## Important Information

Note while we endeavour to make our sales details accurate and reliable, if there is any point which is of particular interest to you, please contact the office and we will be pleased to confirm the position for you. We have not personally tested any apparatus, equipment, fixtures, fittings or services and cannot verify they are in working order or fit for their purposes. Nothing in these particulars is intended to indicate that carpets or curtains, furnishings or fittings, electrical goods (whether wired or not). Gas fires or light fittings or any other fixtures not expressly included form part of the property offered for sale. This computer generated Floorplan, if applicable, is intended as a general guide to the layout and design of the property. It is not to scale and should not be relied upon for dimensions. Tenure: We cannot confirm the tenure of the property as we have not had access to the legal documents. The buyer is advised to obtain verification from their solicitor or surveyor.

Peter Alan Limited is registered in England and Wales under company number 2073153, Registered Office is Cumbria House, 16-20 Hockliffe Street, Leighton Buzzard, Bedfordshire, LU7 1GN. VAT Registration Number is 500 2481 05. For activities relating to regulated mortgages and non-investment insurance contracts, Peter Alan Limited is an appointed representative of Connells Limited which is authorised and regulated by the Financial Conduct Authority. Connells Limited's Financial Services Register number is 302221. Most buy-to-let

**pa** peter  
alan