



## Heol Twyn Du, £120,000

- No onward chain
- Ideal first-time buy
- Great transport links
- Close to local amenities
- Rear garden
- In need of some modernisation
- EPC Rating: D



 3
  1
  1





## About the property

A three bedroom end-of-terrace property in a popular residential area in Merthyr Tydfil. Being sold with no onward chain, this property would make an ideal investment opportunity or first time buy.

The ground floor comprises of the hallway, large - double-window living room, kitchen and rear entrance porch to a utility area and downstairs toilet with an outbuilding.

To the first floor are three bedrooms and the family bathroom.

To the rear of the property is the entrance to the kitchen porch and a paved garden.

Set in an ideal location close to local amenities such as Cyfarthfa Retail Park and Trago Mills. The location benefits from great transport links such as the A465 Heads of the Valleys Road and A470.

Viewing is highly recommended to see all this property has to offer



## Accommodation

Hallway

Lounge/Diner

Kitchen

Bathroom

Utility

Toilet

Landing

Bedroom 1

Bedroom 2

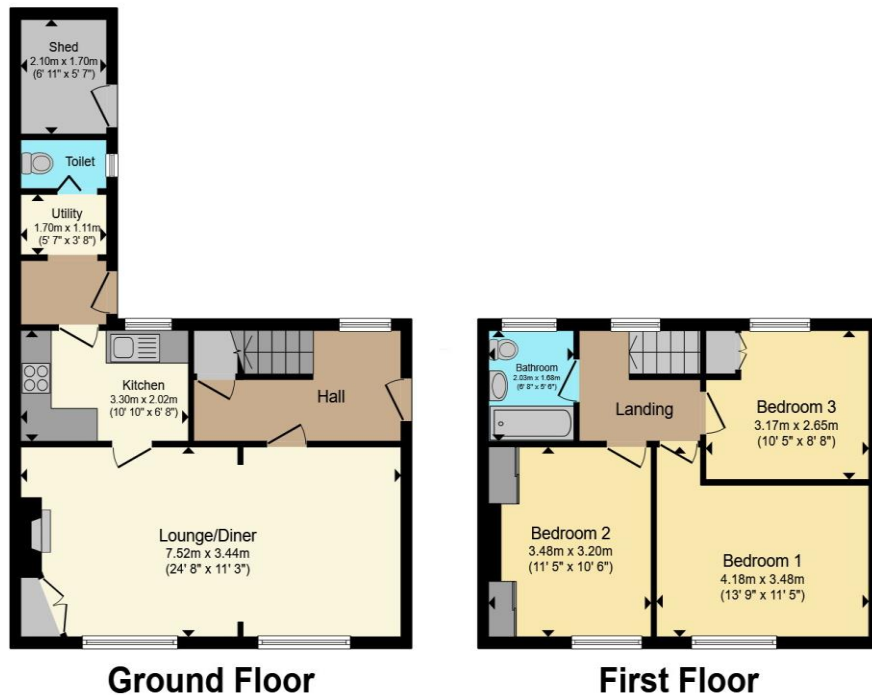
Bedroom 3



01685 722223

merthytydfil@peteralan.co.uk

## Floorplan



Total floor area 93.5 m<sup>2</sup> (1,007 sq.ft.) approx

This floor plan is for illustrative purposes only. It is not drawn to scale. Any measurements, floor areas (including any total floor area), openings and orientation are approximate. No details are guaranteed, they cannot be relied upon for any purpose and they do not form part of any agreement. No liability is taken for any error, omission or misstatement. A party must rely upon its own inspection(s). Powered by [www.propertybox.io](http://www.propertybox.io)

**pa** peter  
alan

## Important Information

Note while we endeavour to make our sales details accurate and reliable, if there is any point which is of particular interest to you, please contact the office and we will be pleased to confirm the position for you. We have not personally tested any apparatus, equipment, fixtures, fittings or services and cannot verify they are in working order or fit for their purposes. Nothing in these particulars is intended to indicate that carpets or curtains, furnishings or fittings, electrical goods (whether wired or not). Gas fires or light fittings or any other fixtures not expressly included form part of the property offered for sale. This computer generated Floorplan, if applicable, is intended as a general guide to the layout and design of the property. It is not to scale and should not be relied upon for dimensions. Tenure: We cannot confirm the tenure of the property as we have not had access to the legal documents. The buyer is advised to obtain verification from their solicitor or surveyor.

Peter Alan Limited is registered in England and Wales under company number 2073153, Registered Office is Cumbria House, 16-20 Hockliffe Street, Leighton Buzzard, Bedfordshire, LU7 1GN. VAT Registration Number is 500 2481 05. For activities relating to regulated mortgages and non-investment insurance contracts, Peter Alan Limited is an appointed representative of Connells Limited which is authorised and regulated by the Financial Conduct Authority. Connells Limited's Financial Services Register number is 302221. Most buy-to-let

**pa** peter  
alan