



Brynamlwg Mount

£340,000

- Council Tax Band B
- No onward chain
- Elevated position with beautiful views
- Ideal family home
- Close to transport links
- Well-presented throughout
- Garage
- EPC Rating: C



 3
  1
  1



About the property

Presenting this beautiful, renovated, semi-detached house, offered for sale with no onward chain in a sought after location in Troedyrhiw, Merthyr Tydfil. Boasting an elevated position, the property enjoys beautiful views and is flooded with natural light throughout.

Step inside to a bright and airy open-plan reception room, perfectly arranged to take advantage of the delightful garden. Ideal for both relaxing and entertaining, this space seamlessly connects to the kitchen, ensuring a sociable flow for modern family living.

The ground floor features a well-appointed bathroom, providing everyday convenience. Three generously sized bedrooms upstairs offer ample space for families or those seeking a potential investment or Air BnB opportunity.

Upon entry, you are greeted by a charming conservatory, inviting you to unwind while appreciating the picturesque outlook. The garden offers a tranquil retreat and the single garage provides additional storage or secure parking.



Accommodation

Conservatory

6' 6" Max x 14' 8" Max (1.98m Max x 4.47m Max)

Kitchen/Lounge/Diner

22' 3" Max x 17' Max (6.78m Max x 5.18m Max)

Lobby

Bathroom

Landing

Bedroom 1

13' 6" Max x 9' 3" Max (4.11m Max x 2.82m Max)

Bedroom 2

8' 6" Max x 9' 7" Max (2.59m Max x 2.92m Max)

Bedroom 3

10' 3" Max x 7' 2" Max (3.12m Max x 2.18m Max)

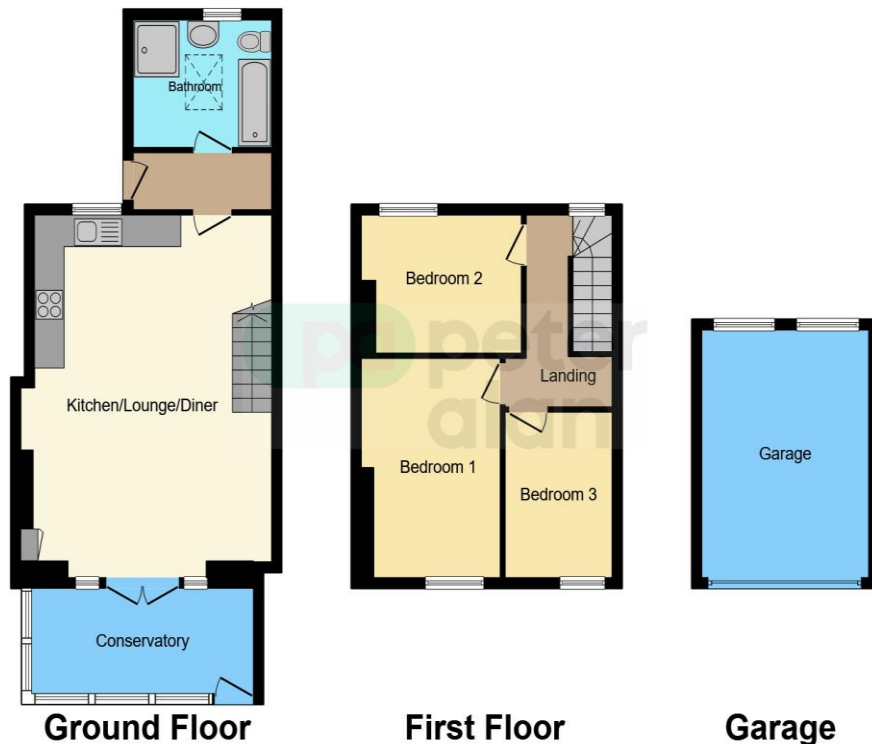
Garage

15' 4" Max x 11' 2" Max (4.67m Max x 3.40m Max)

01685 722223

merthytydfil@peteralan.co.uk

Floorplan



This floor plan is for illustrative purposes only. It is not drawn to scale. Any measurements, floor areas (including any total floor area), openings and orientation are approximate. No details are guaranteed, they cannot be relied upon for any purpose and they do not form part of any agreement. No liability is taken for any error, omission or misstatement. A party must rely upon its own inspection(s). Powered by www.focalagent.com

Important Information

Note while we endeavour to make our sales details accurate and reliable, if there is any point which is of particular interest to you, please contact the office and we will be pleased to confirm the position for you. We have not personally tested any apparatus, equipment, fixtures, fittings or services and cannot verify they are in working order or fit for their purposes. Nothing in these particulars is intended to indicate that carpets or curtains, furnishings or fittings, electrical goods (whether wired or not). Gas fires or light fittings or any other fixtures not expressly included form part of the property offered for sale. This computer generated Floorplan, if applicable, is intended as a general guide to the layout and design of the property. It is not to scale and should not be relied upon for dimensions. Tenure: We cannot confirm the tenure of the property as we have not had access to the legal documents. The buyer is advised to obtain verification from their solicitor or surveyor.

Peter Alan Limited is registered in England and Wales under company number 2073153, Registered Office is Cumbria House, 16-20 Hockliffe Street, Leighton Buzzard, Bedfordshire, LU7 1GN. VAT Registration Number is 500 2481 05. For activities relating to regulated mortgages and non-investment insurance contracts, Peter Alan Limited is an appointed representative of Connells Limited which is authorised and regulated by the Financial Conduct Authority. Connells Limited's Financial Services Register number is 302221. Most buy-to-let

pa peter
alan