



Gersanws, Cefn Coed

£220,000

- Council Tax Band A
- Well-presented throughout
- Two Reception rooms
- Ideal family home
- Garage
- Spacious Rear Garden
- Close to local amenities
- Great transport links
- EPC Rating: Awaited



3 1 2



About the property

We are delighted to present this immaculate extended semi-detached house, offered for sale which provides generous living accommodation throughout. This beautifully maintained property is arranged over two floors and is ideal for those seeking a spacious and comfortable family home.

Upon entering, you are greeted by two inviting reception rooms, each featuring its own fireplace. One reception room is enhanced by a charming wood burner, perfect for creating a warm and cosy ambience on cooler evenings, while the second reception boasts a second wood burner – ideal for entertaining guests or relaxing with the family.

The property includes a modern, well-appointed kitchen, ideally suited for both everyday family meals and entertaining. The thoughtful extension of the home adds flexibility and additional space to meet the needs of modern living.

Upstairs, the property offers three well-proportioned bedrooms. Two of the bedrooms are generous doubles, providing ample space for furnishings and storage, while the third is a comfortable single, ideal for a child's room or a dedicated study. The property further benefits from a front forecourt and large rear



Accommodation

Hallway

Sitting Room

9' 4" Max x 13' 3" Max (2.84m Max x 4.04m Max)

Lounge/Diner

12' 9" Max x 12' 2" Max (3.89m Max x 3.71m Max)

Kitchen

W.C.

Landing

Bedroom 1

13' 1" Max x 10' Max (3.99m Max x 3.05m Max)

Bedroom 2

9' 8" Max x 10' 9" Max (2.95m Max x 3.28m Max)

Bedroom 3

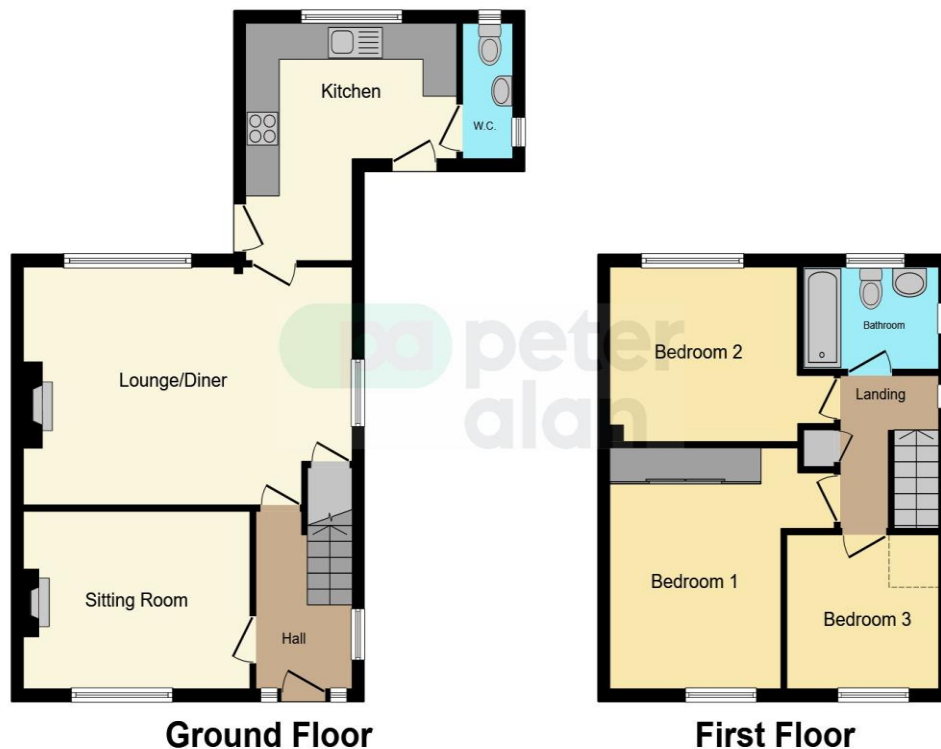
8' 4" Max x 9' 1" Max (2.54m Max x 2.77m Max)

Bathroom

01685 722223

merthytydfil@peteralan.co.uk

Floorplan



This floor plan is for illustrative purposes only. It is not drawn to scale. Any measurements, floor areas (including any total floor area), openings and orientation are approximate. No details are guaranteed, they cannot be relied upon for any purpose and they do not form part of any agreement. No liability is taken for any error, omission or misstatement. A party must rely upon its own inspection(s). Powered by www.focalagent.com

Under the terms of the Estate Agency Act 1979 (Section 21), please note that the vendor is an Employee of the Connells Group of companies.

Important Information

Note while we endeavour to make our sales details accurate and reliable, if there is any point which is of particular interest to you, please contact the office and we will be pleased to confirm the position for you. We have not personally tested any apparatus, equipment, fixtures, fittings or services and cannot verify they are in working order or fit for their purposes. Nothing in these particulars is intended to indicate that carpets or curtains, furnishings or fittings, electrical goods (whether wired or not). Gas fires or light fittings or any other fixtures not expressly included form part of the property offered for sale. This computer generated Floorplan, if applicable, is intended as a general guide to the layout and design of the property. It is not to scale and should not be relied upon for dimensions. Tenure: We cannot confirm the tenure of the property as we have not had access to the legal documents. The buyer is advised to obtain verification from their solicitor or surveyor.

Peter Alan Limited is registered in England and Wales under company number 2073153, Registered Office is Cumbria House, 16-20 Hockliffe Street, Leighton Buzzard, Bedfordshire, LU7 1GN. VAT Registration Number is 500 2481 05. For activities relating to regulated mortgages and non-investment insurance contracts, Peter Alan Limited is an appointed representative of Connells Limited which is authorised and regulated by the Financial Conduct Authority. Connells Limited's Financial Services Register number is 302221. Most buy-to-let

pa peter
alan