



Coronation Crescent, £145,000

- Council Tax Band A
- Driveway
- Rear garden
- Ideal first-time buy or family home
- Popular residential location
- EPC Rating: D



 3  1  1



About the property

On offer is a charming three-bedroom semi-detached house available for sale in a popular location in Fochriw. This property is ideally suited for first-time buyers and families alike, offering ample space and a homely feel. The property boasts a singular reception room, serving as the perfect space for entertaining guests or spending quality time with the family. Notably, this reception room provides direct access to the garden, seamlessly blending indoor and outdoor living spaces for a unique living experience.

The property also features a well-appointed kitchen, equipped to cater for all your culinary needs. With three spacious bedrooms and a functional bathroom, this house caters to both privacy and practicality. Furthermore, the distinctive features of this property include a driveway and a rear garden, adding to the overall appeal and convenience.

The location of this property is one of its standout features. It is in close proximity to public transport links. For families with school-going children, the presence of nearby schools is a significant advantage. For nature enthusiasts, the nearby parks and walking routes present an opportunity for outdoor activities and a chance to appreciate the beauty of the surroundings.



Accommodation

Hall

Lounge

19' 5" Max x 9' 7" Max (5.92m Max x 2.92m Max)

Kitchen

9' 8" Max x 9' 2" Max (2.95m Max x 2.79m Max)

Utility

Landing

Bedroom 1

15' 4" Max x 9' 9" Max (4.67m Max x 2.97m Max)

Bedroom 2

5' 5" Max x 12' 4" Max (1.65m Max x 3.76m Max)

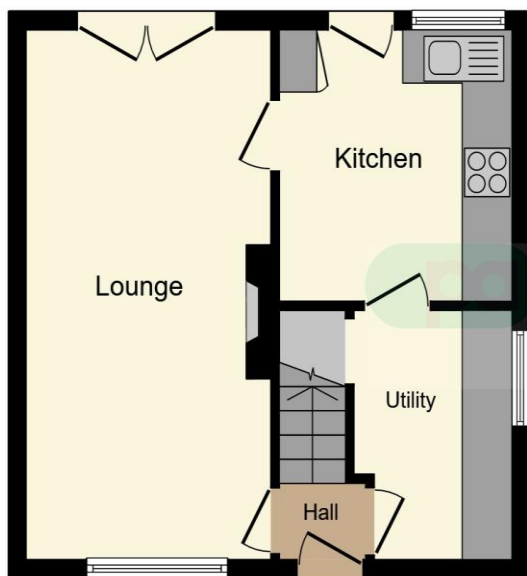
Bedroom 3

10' 7" Max x 6' 1" Max (3.23m Max x 1.85m Max)

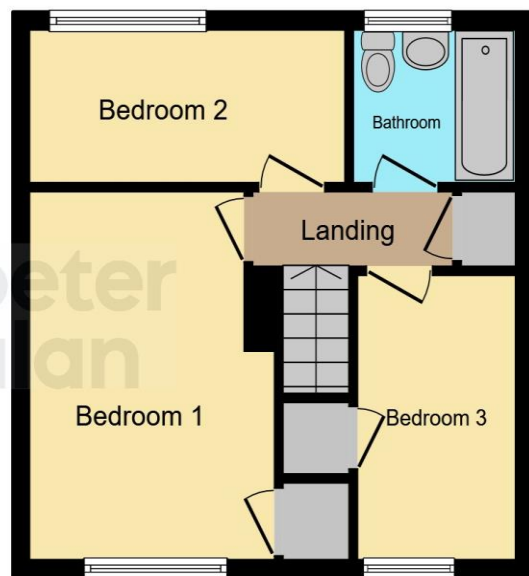
01685 722223

merthytydfil@peteralan.co.uk

Floorplan



Ground Floor



First Floor

This floor plan is for illustrative purposes only. It is not drawn to scale. Any measurements, floor areas (including any total floor area), openings and orientation are approximate. No details are guaranteed, they cannot be relied upon for any purpose and they do not form part of any agreement. No liability is taken for any error, omission or misstatement. A party must rely upon its own inspection(s). Powered by www.focalagent.com



Important Information

Note while we endeavour to make our sales details accurate and reliable, if there is any point which is of particular interest to you, please contact the office and we will be pleased to confirm the position for you. We have not personally tested any apparatus, equipment, fixtures, fittings or services and cannot verify they are in working order or fit for their purposes. Nothing in these particulars is intended to indicate that carpets or curtains, furnishings or fittings, electrical goods (whether wired or not). Gas fires or light fittings or any other fixtures not expressly included form part of the property offered for sale. This computer generated Floorplan, if applicable, is intended as a general guide to the layout and design of the property. It is not to scale and should not be relied upon for dimensions. Tenure: We cannot confirm the tenure of the property as we have not had access to the legal documents. The buyer is advised to obtain verification from their solicitor or surveyor.

Peter Alan Limited is registered in England and Wales under company number 2073153, Registered Office is Cumbria House, 16-20 Hockliffe Street, Leighton Buzzard, Bedfordshire, LU7 1GN. VAT Registration Number is 500 2481 05. For activities relating to regulated mortgages and non-investment insurance contracts, Peter Alan Limited is an appointed representative of Connells Limited which is authorised and regulated by the Financial Conduct Authority. Connells Limited's Financial Services Register number is 302221. Most buy-to-let