



Barrack Row, £160,000

- Council Tax Band - A
- No onward chain
- Beautifully presented throughout
- Ideal first time buy
- Previously used as an Air BnB
- Good-size rear garden
- Close to local amenities
- Good transport links
- EPC Rating: C



 3
  1
  1



About the property

A well-presented terrace house in Dowlais, being sold with no onward chain. This property is a charming blend of comfort and convenience, that testifies to its well-maintained status. It is located in a popular area, advantageously close to public transport links such as the A465 Heads of the Valleys Road and local bus routes., local amenities, and reputable schools. It is an ideal investment for first-time buyers, investors, families, and those interested in Air BnB opportunities.

The house boasts three spacious double bedrooms. The master bedroom offers an open-plan en suite with built-in wardrobes and a Juliette balcony. The remaining two bedrooms are well-sized, providing ample space for a large family or guests. The property features a spacious reception room that is perfectly designed for relaxation or entertaining guests. The kitchen, which leads directly to the garden, is well-appointed. The bathroom is conveniently located on the ground floor, a thoughtful design for ease of access. The garden is a unique feature of this house, offering a tranquil space for outdoor relaxation and activities.

In summary, this is a fantastic opportunity to acquire a beautiful home in a desirable location. The blend of comfort, functionality, and the charm of the location makes it a truly enticing prospect.



Accommodation

Living Room

13' 2" Max x 17' 9" Max (4.01m Max x 5.41m Max)

Kitchen

13' 8" Max x 9' 1" Max (4.17m Max x 2.77m Max)

Bathroom

Landing

Bedroom 1/En-Suite

Irregular Shaped Room x (x)

Bedroom 2

14' 2" Max x 8' 1" Plus built in wardrobe (4.32m Max x 2.46m Plus built in wardrobe)

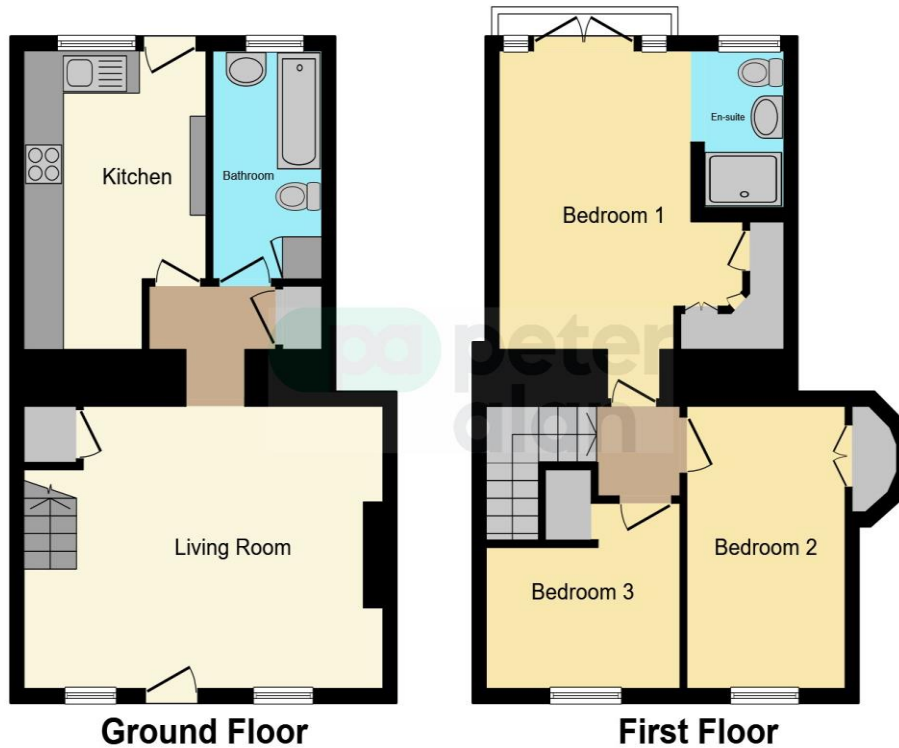
Bedroom 3

10' 1" Max x 9' 6" Max (3.07m Max x 2.90m Max)

01685 722223

merthyrttydfil@peteralan.co.uk

Floorplan



This floor plan is for illustrative purposes only. It is not drawn to scale. Any measurements, floor areas (including any total floor area), openings and orientation are approximate. No details are guaranteed, they cannot be relied upon for any purpose and they do not form part of any agreement. No liability is taken for any error, omission or misstatement. A party must rely upon its own inspection(s). Powered by www.focalagent.com



Important Information

Note while we endeavour to make our sales details accurate and reliable, if there is any point which is of particular interest to you, please contact the office and we will be pleased to confirm the position for you. We have not personally tested any apparatus, equipment, fixtures, fittings or services and cannot verify they are in working order or fit for their purposes. Nothing in these particulars is intended to indicate that carpets or curtains, furnishings or fittings, electrical goods (whether wired or not). Gas fires or light fittings or any other fixtures not expressly included form part of the property offered for sale. This computer generated Floorplan, if applicable, is intended as a general guide to the layout and design of the property. It is not to scale and should not be relied upon for dimensions. Tenure: We cannot confirm the tenure of the property as we have not had access to the legal documents. The buyer is advised to obtain verification from their solicitor or surveyor.

Peter Alan Limited is registered in England and Wales under company number 2073153, Registered Office is Cumbria House, 16-20 Hockliffe Street, Leighton Buzzard, Bedfordshire, LU7 1GN. VAT Registration Number is 500 2481 05. For activities relating to regulated mortgages and non-investment insurance contracts, Peter Alan Limited is an appointed representative of Connells Limited which is authorised and regulated by the Financial Conduct Authority. Connells Limited's Financial Services Register number is 302221. Most buy-to-let