



## Monmouth Drive, £235,000

- Integral garage with driveway
- Close to local amenities
- Great transport links
- Popular location
- EPC Rating: C



 4  1  1





## About the property

Presenting a semi-detached house for sale, its strong foundational features offer a promising opportunity as your dream home and a worthwhile investment.

The property is a 4-bedroom house, with two spacious double bedrooms ready for your personal touch. The home benefits from a large open-plan reception room, providing ample living space for family time or entertaining guests. The kitchen is ready to tailor to your own personal taste and requirements.

The property also boasts some unique features including an integral garage, a driveway, rear, front and side garden areas. These features provide both practicality and an opportunity for outdoor enjoyment. The garden offers opportunity for landscaping into a personal sanctuary.

In conclusion, this property offers a unique opportunity for families seeking a home in a well-connected and popular location. Its strong foundational features offer distinct potential for personalisation. One of the key benefits of this house is its location. It is conveniently placed near a variety of local amenities, public transport links and quality schools. For those who enjoy a leisurely stroll, there are a number of walking routes nearby. Its location in a popular area further enhances its appeal, making it an ideal home for





## Accommodation

**Lounge**

**Dining Room**

**Kitchen**

9' 1" x 6' 9" ( 2.77m x 2.06m )

**Bedroom 1**

19' 7" max x 11' 9" max ( 5.97m max x 3.58m max )

**Bedroom 2**

**Bedroom 3**

10' 2" max x 9' 4" max ( 3.10m max x 2.84m max )

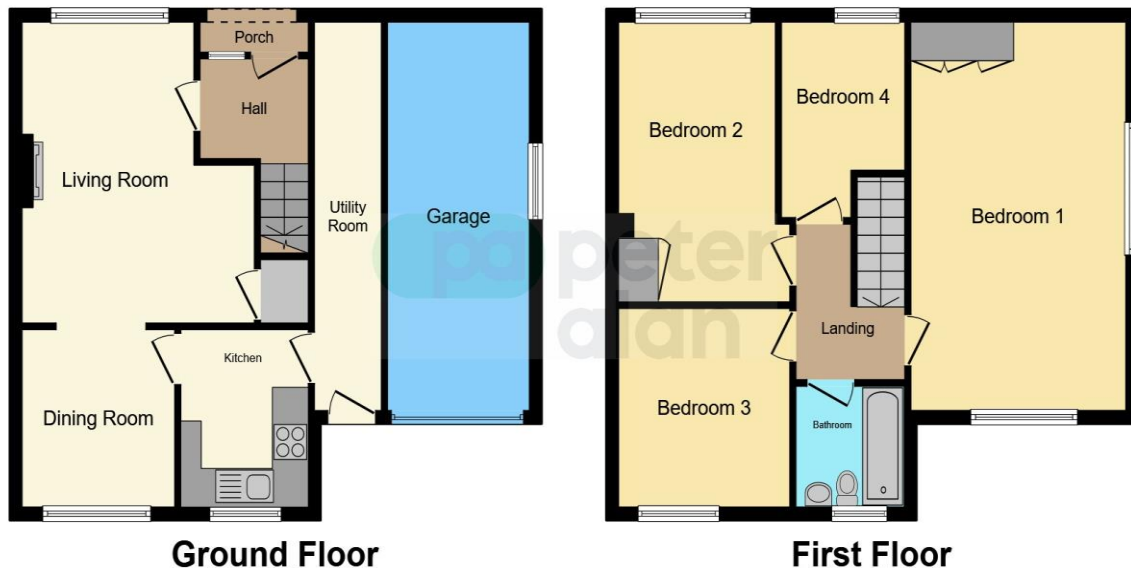
**Bedroom 4**

7' 1" max x 9' 8" max ( 2.16m max x 2.95m max )

01685 722223

merthytydfil@peteralan.co.uk

## Floorplan



This floor plan is for illustrative purposes only. It is not drawn to scale. Any measurements, floor areas (including any total floor area), openings and orientation are approximate. No details are guaranteed, they cannot be relied upon for any purpose and they do not form part of any agreement. No liability is taken for any error, omission or misstatement. A party must rely upon its own inspection(s). Powered by [www.focalagent.com](http://www.focalagent.com)

## Important Information

Note while we endeavour to make our sales details accurate and reliable, if there is any point which is of particular interest to you, please contact the office and we will be pleased to confirm the position for you. We have not personally tested any apparatus, equipment, fixtures, fittings or services and cannot verify they are in working order or fit for their purposes. Nothing in these particulars is intended to indicate that carpets or curtains, furnishings or fittings, electrical goods (whether wired or not). Gas fires or light fittings or any other fixtures not expressly included form part of the property offered for sale. This computer generated Floorplan, if applicable, is intended as a general guide to the layout and design of the property. It is not to scale and should not be relied upon for dimensions. Tenure: We cannot confirm the tenure of the property as we have not had access to the legal documents. The buyer is advised to obtain verification from their solicitor or surveyor.

Peter Alan Limited is registered in England and Wales under company number 2073153, Registered Office is Cumbria House, 16-20 Hockliffe Street, Leighton Buzzard, Bedfordshire, LU7 1GN. VAT Registration Number is 500 2481 05. For activities relating to regulated mortgages and non-investment insurance contracts, Peter Alan Limited is an appointed representative of Connells Limited which is authorised and regulated by the Financial Conduct Authority. Connells Limited's Financial Services Register number is 302221. Most buy-to-let

**pa** peter  
alan