



Beechwood Avenue, £140,000

- Council Tax Band - A
- No onward chain
- Excellent public transport links
- New boiler fitted in March 2024
- Nearby schools and walking routes
- Beautiful Views
- EPC Rating: C



 3  1  2



About the property

Peter Alan are delighted to present to you this charming semi-detached house for sale. This residence is located in a popular area with excellent public transport links, nearby schools, and local amenities. For those who enjoy the outdoors, there are also ample walking routes nearby.

The house offers great potential for families and couples alike. It boasts three bedrooms; two of which are comfortably sized doubles and the other a cosy single, all well laid out to accommodate your needs. The well-presented shower room offers a relaxing space for your daily routines. Furthermore, the property features a living room, kitchen and dining room.

The kitchen is practical and convenient, ready to be the heart of your home. The property also benefits from a outhouse, adding value and versatility to the space. The property also boasts a new boiler fitted in March 2024.

One of the unique features of this property is its garden. The garden offers a beautiful view that further enhances the charm of the property, whilst also providing ample outdoor space for both enjoyment and relaxation.



Accommodation

Porch

Shower Room

Hallway

Living Room

Irregular Shaped Room x (x)

Dining Room

8' 3" Max x 10' 3" Max (2.51m Max x 3.12m Max)

Kitchen

9' Max x 9' 1" Max (2.74m Max x 2.77m Max)

Landing

Bedroom 1

12' 5" Max x 10' Plus door recess (3.78m Max x 3.05m Plus door recess)

Bedroom 2

9' 1" Max x 10' Plus door recess (2.77m Max x 3.05m Plus door recess)

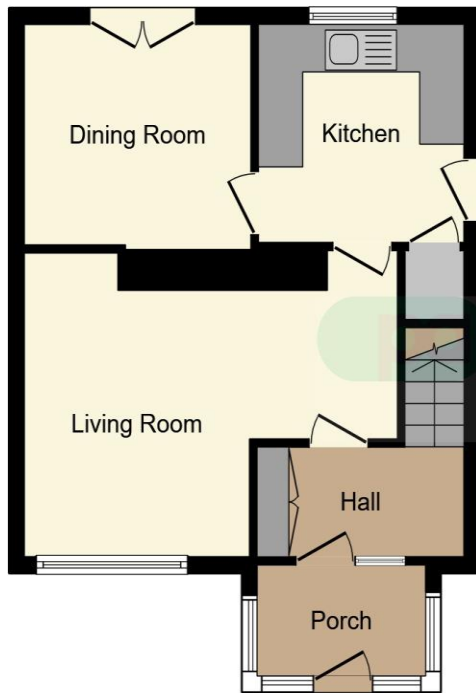
Bedroom 3

7' 8" Max x 9' 2" Max (2.34m Max x 2.79m Max)

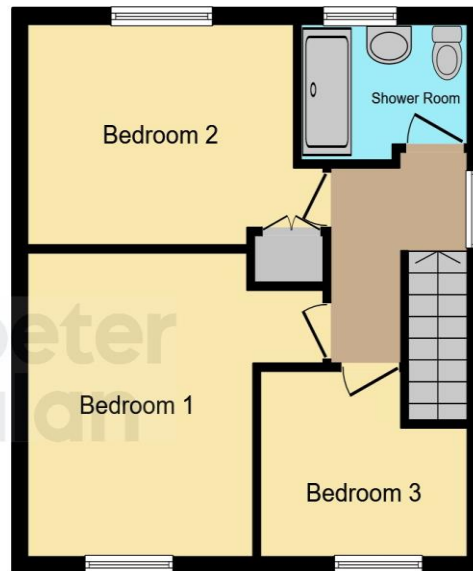
01685 722223

merthyrtfdil@peteralan.co.uk

Floorplan



Ground Floor



First Floor

This floor plan is for illustrative purposes only. It is not drawn to scale. Any measurements, floor areas (including any total floor area), openings and orientation are approximate. No details are guaranteed, they cannot be relied upon for any purpose and they do not form part of any agreement. No liability is taken for any error, omission or misstatement. A party must rely upon its own inspection(s). Powered by www.focalagent.com

Important Information

Note while we endeavour to make our sales details accurate and reliable, if there is any point which is of particular interest to you, please contact the office and we will be pleased to confirm the position for you. We have not personally tested any apparatus, equipment, fixtures, fittings or services and cannot verify they are in working order or fit for their purposes. Nothing in these particulars is intended to indicate that carpets or curtains, furnishings or fittings, electrical goods (whether wired or not). Gas fires or light fittings or any other fixtures not expressly included form part of the property offered for sale. This computer generated Floorplan, if applicable, is intended as a general guide to the layout and design of the property. It is not to scale and should not be relied upon for dimensions. Tenure: We cannot confirm the tenure of the property as we have not had access to the legal documents. The buyer is advised to obtain verification from their solicitor or surveyor.

Peter Alan Limited is registered in England and Wales under company number 2073153, Registered Office is Cumbria House, 16-20 Hockliffe Street, Leighton Buzzard, Bedfordshire, LU7 1GN. VAT Registration Number is 500 2481 05. For activities relating to regulated mortgages and non-investment insurance contracts, Peter Alan Limited is an appointed representative of Connells Limited which is authorised and regulated by the Financial Conduct Authority. Connells Limited's Financial Services Register number is 302221. Most buy-to-let

