



## Church Street, offers over £390,000

- Council tax band F
- Double Garage
- Close to local amenities
- 5 double bedrooms plus study
- Set over three floors
- Well presented throughout
- EPC Rating: C



 5  1  1



## About the property

Offered for sale with no onward chain, an imposing three storey residence set in a popular location in Merthyr Tydfil.

The generous ground floor accommodation briefly comprises an entrance hallway, a lounge, dining room, a spacious kitchen/breakfast room, a separate utility room and a downstairs cloakroom/wc. To the first floor there is a master bedroom with fitted wardrobes and an en-suite shower room, two further double bedrooms, a spacious family bathroom with a bath and a double shower, and a study which could easily be utilised as a sixth bedroom. On the second floor there are two more large double bedrooms as well as another full bathroom with a bath and double shower.

The property has gardens to three sides and brick paved driveway to a double garage. The driveway can easily accommodate numerous vehicles off road.

Viewing highly recommended.



## Accommodation

### Ground Floor Accommodation

#### Entrance Hallway

#### Lounge

18' Max x 12' 11" Max ( 5.49m Max x 3.94m Max )

#### Dining Room

13' 8" Max x 11' Max ( 4.17m Max x 3.35m Max )

#### Kitchen / Breakfast Room

23' 8" Max x 17' 2" Max ( 7.21m Max x 5.23m Max )

#### Utility Room

#### Cloakroom/Wc

### First Floor Accommodation

#### Landing

#### Master Bedroom

15' 9" Max x 13' Max ( 4.80m Max x 3.96m Max )

#### En-Suite Shower Room

#### Bedroom Two

18' Max x 12' Max ( 5.49m Max x 3.66m Max )

#### Bedroom Three

13' 4" Max x 11' 4" Max ( 4.06m Max x 3.45m Max )

#### Family Bathroom

#### Study

13' 1" Max x 10' 9" Max ( 3.99m Max x 3.28m Max )

### Second Floor Accommodation

#### Landing

#### Bedroom Four

16' 7" Max x 11' 9" Max ( 5.05m Max x 3.58m Max )

#### Bedroom Five

01685 722223

merthyrdyfil@peteralan.co.uk

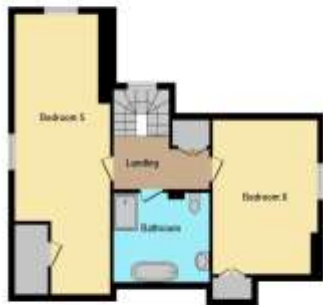
## Floorplan



Ground Floor



First Floor



Second Floor

This floor plan is for illustrative purposes only. It is not drawn to scale. Any measurements, floor areas (including any total floor area), openings and orientation are approximate. No details are guaranteed, they cannot be relied upon for any purpose and they do not form part of any agreement. No liability is taken for any error, omission or misstatement. A party must rely upon its own inspection(s). Powered by [www.focalagent.com](http://www.focalagent.com)

## Important Information

Note while we endeavour to make our sales details accurate and reliable, if there is any point which is of particular interest to you, please contact the office and we will be pleased to confirm the position for you. We have not personally tested any apparatus, equipment, fixtures, fittings or services and cannot verify they are in working order or fit for their purposes. Nothing in these particulars is intended to indicate that carpets or curtains, furnishings or fittings, electrical goods (whether wired or not). Gas fires or light fittings or any other fixtures not expressly included form part of the property offered for sale. This computer generated Floorplan, if applicable, is intended as a general guide to the layout and design of the property. It is not to scale and should not be relied upon for dimensions. Tenure: We cannot confirm the tenure of the property as we have not had access to the legal documents. The buyer is advised to obtain verification from their solicitor or surveyor.

Peter Alan Limited is registered in England and Wales under company number 2073153, Registered Office is Cumbria House, 16-20 Hockliffe Street, Leighton Buzzard, Bedfordshire, LU7 1GN. VAT Registration Number is 500 2481 05. For activities relating to regulated mortgages and non-investment insurance contracts, Peter Alan Limited is an appointed representative of Connells Limited which is authorised and regulated by the Financial Conduct Authority. Connells Limited's Financial Services Register number is 302221. Most buy-to-let

