



## The Avenue, offers over £170,000

- Council Tax B
- No Onward Chain
- Set over three floors
- Beautiful views
- Close to local amenities and transport links
- Charming terraced property
- EPC Rating: E



 3  2  2



## About the property

For sale is this charming terraced property, ideally situated to benefit from a range of local amenities. The property is in good condition, ready for its next owners to move in and make it their own.

The property layout consists of three bedrooms, a family bathroom, a well-equipped kitchen, and a reception room. Whether it's preparing your favourite meal in the kitchen or relaxing in the cosy reception room, this house provides the perfect setting for both relaxation and entertainment.

One of the unique features of this property is its lovely garden. This well-maintained outdoor space provides an ideal setting for alfresco dining, gardening, or just enjoying the outdoors.

This property benefits from an excellent location. It is conveniently situated with easy access to public transport links, making commuting and travelling a breeze. Moreover, the property is in close proximity to local schools, making it an ideal home for families. The nearby walking and cycling routes provide plenty of opportunities for outdoor activities. Plus, a variety of local amenities are just a short walk away.



## Accommodation

### Hall

7' 8" Max x 10' 4" Max ( 2.34m Max x 3.15m Max )

### Living Room

20' 8" Max x 12' 2" Max ( 6.30m Max x 3.71m Max )

### Kitchen

14' Max x 10' 3" Max ( 4.27m Max x 3.12m Max )

### Shower Room

### Sitting Room

### Utility

### Landing

### Bedroom 1

12' 9" Max x 15' 8" Max ( 3.89m Max x 4.78m Max )

### Bedroom 2

8' 7" Max x 10' 3" Max ( 2.62m Max x 3.12m Max )

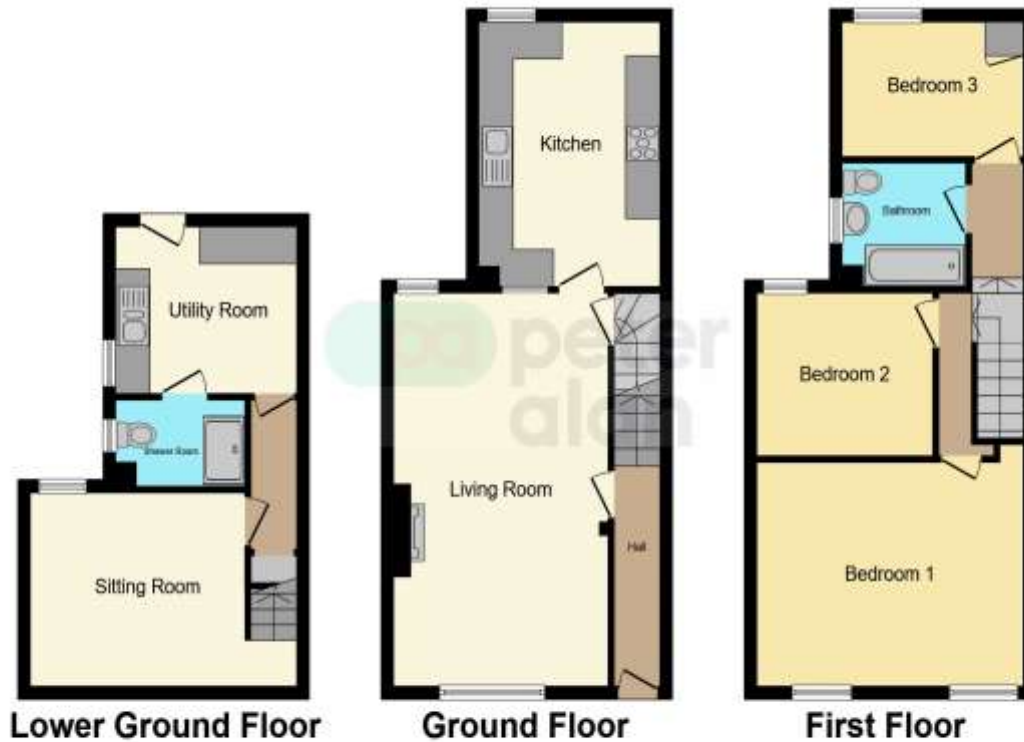
### Bedroom 3



01685 722223

merthyrdyfil@peteralan.co.uk

## Floorplan



This floor plan is for illustrative purposes only. It is not drawn to scale. Any measurements, floor areas (including any total floor area), openings and orientation are approximate. No details are guaranteed, they cannot be relied upon for any purpose and they do not form part of any agreement. No liability is taken for any error, omission or misstatement. A party must rely upon its own inspection(s). Powered by [www.focalagent.com](http://www.focalagent.com)

## Important Information

Note while we endeavour to make our sales details accurate and reliable, if there is any point which is of particular interest to you, please contact the office and we will be pleased to confirm the position for you. We have not personally tested any apparatus, equipment, fixtures, fittings or services and cannot verify they are in working order or fit for their purposes. Nothing in these particulars is intended to indicate that carpets or curtains, furnishings or fittings, electrical goods (whether wired or not). Gas fires or light fittings or any other fixtures not expressly included form part of the property offered for sale. This computer generated Floorplan, if applicable, is intended as a general guide to the layout and design of the property. It is not to scale and should not be relied upon for dimensions. Tenure: We cannot confirm the tenure of the property as we have not had access to the legal documents. The buyer is advised to obtain verification from their solicitor or surveyor.

Peter Alan Limited is registered in England and Wales under company number 2073153. Registered Office is Cumbria House, 16-20 Hockliffe Street, Leighton Buzzard, Bedfordshire, LU7 1GN. VAT Registration Number is 500 2481 05. For activities relating to regulated mortgages and non-investment insurance contracts, Peter Alan Limited is an appointed representative of Connells Limited which is authorised and regulated by the Financial Conduct Authority. Connells Limited's Financial Services Register number is 302221. Most buy-to-let

