



Cyfarthfa Mews, £149,995

- Council Tax Band - C
- Neutrally decorated
- Convenient public transport links
- Garden for outdoor space
- Well-proportioned reception room
- Ground floor bathroom
- EPC Rating: C



 2  1  1



About the property

Presenting this elegantly end-of-terrace property, now available for sale. Neutrally decorated to suit all tastes, this home offers a blank canvas to potential buyers looking to put their personal stamp on their new residence. It boasts a desirable layout, perfectly designed for families or couples seeking a harmonious blend of comfort and style.

The property comprises two bedrooms, a spacious double and a cosy single, ideal for a young family or a couple. The heart of the house is a well-proportioned reception room. This space is perfect for relaxation or entertaining guests, providing a welcoming atmosphere for all.

A well-equipped kitchen is included, offering ample space for meal preparation and storage. The property further benefits from a bathroom that serves the living spaces.

One of the unique features of this property is the availability of parking, a highly sought-after convenience in residential areas. In addition, the property features a garden, offering a serene outdoor space for relaxation or play.



Accommodation

Living Room

13' 1" Max x 13' Max (3.99m Max x 3.96m Max)

Kitchen

12' 7" Max x 9' 5" Max (3.84m Max x 2.87m Max)

Bathroom

Landing

Bedroom 1

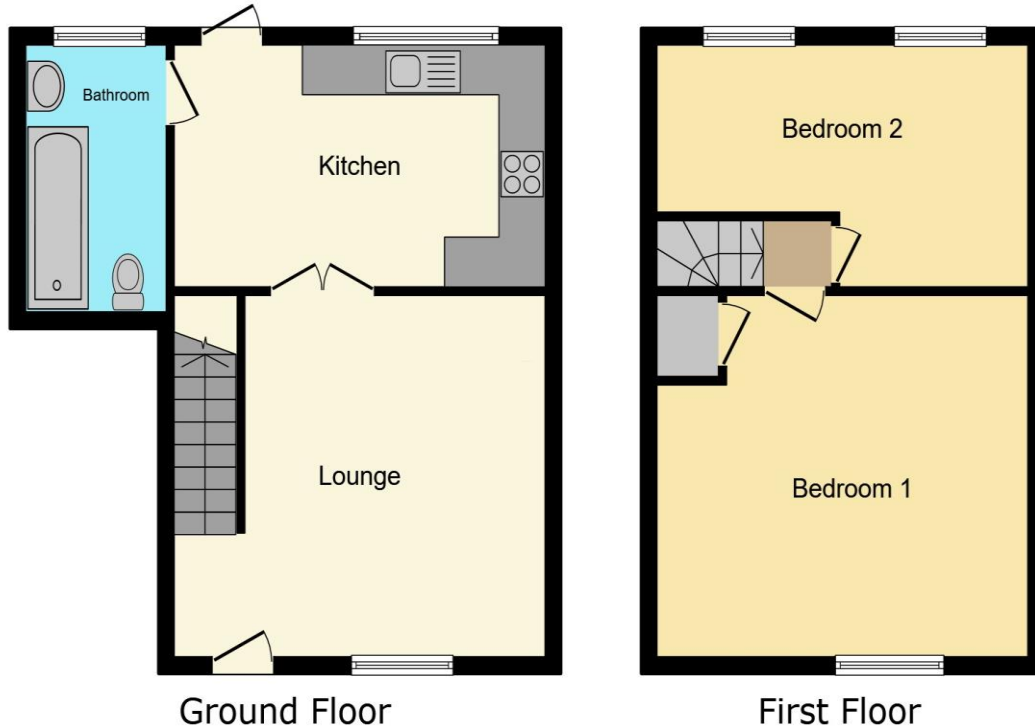
13' 1" Max x 10' 4" Plus fitted wardrobe (3.99m Max x 3.15m Plus fitted wardrobe)

Bedroom 2

01685 722223

merthytydfil@peteralan.co.uk

Floorplan



This floor plan is for illustrative purposes only. It is not drawn to scale. Any measurements, floor areas (including any total floor area), openings and orientations are approximate. No details are guaranteed, they cannot be relied upon for any purpose and do not form any part of any agreement. No liability is taken for any error, omission or misstatement. A party must rely upon its own inspection(s). Powered by www.Propertybox.io

Important Information

Note while we endeavour to make our sales details accurate and reliable, if there is any point which is of particular interest to you, please contact the office and we will be pleased to confirm the position for you. We have not personally tested any apparatus, equipment, fixtures, fittings or services and cannot verify they are in working order or fit for their purposes. Nothing in these particulars is intended to indicate that carpets or curtains, furnishings or fittings, electrical goods (whether wired or not). Gas fires or light fittings or any other fixtures not expressly included form part of the property offered for sale. This computer generated Floorplan, if applicable, is intended as a general guide to the layout and design of the property. It is not to scale and should not be relied upon for dimensions. Tenure: We cannot confirm the tenure of the property as we have not had access to the legal documents. The buyer is advised to obtain verification from their solicitor or surveyor.

Peter Alan Limited is registered in England and Wales under company number 2073153, Registered Office is Cumbria House, 16-20 Hockliffe Street, Leighton Buzzard, Bedfordshire, LU7 1GN. VAT Registration Number is 500 2481 05. For activities relating to regulated mortgages and non-investment insurance contracts, Peter Alan Limited is an appointed representative of Connells Limited which is authorised and regulated by the Financial Conduct Authority. Connells Limited's Financial Services Register number is 302221. Most buy-to-let

