



## Brecon Rise

£230,000

- Council Tax C
- Elevated position
- Well-decorated detached property
- Well-appointed kitchen
- Garage
- EPC Rating: D



3 1 1



## About the property

This delightfully presented, well-decorated detached property is now available for sale. The property boasts a spacious layout, built for comfort and ease of living, and is ideally suited for both families and couples.

The residence comprises of three generously sized bedrooms, one of which includes a en-suite shower room with wash basin, serving as the perfect personal retreat. Furthermore, the property provides one comprehensive bathroom, ensuring convenience for all residents.

The property features a single well-sized reception room, perfect for hosting guests or spending quality time with family. In addition, the home includes a well-appointed kitchen, equipped with ample dining space, catering to all your culinary needs.

One of the unique features of this property is its garage, providing additional storage space. The property is also surrounded by an array of essential amenities, public transport links, and reputable schools, adding to the convenience of daily living.



## Accommodation

**Hallway**

**Bathroom**

**W.C**

**Garage**

**Kitchen/Diner**

Irregular Shaped Room x ( x )

**Living Area**

15' 1" Max x 13' 6" Max ( 4.60m Max x 4.11m Max )

**Landing**

**Bedroom 1**

8' 8" Max x 19' 7" Max ( 2.64m Max x 5.97m Max )

**En-Suite Shower Room**

**Bedroom 2**

15' 1" Max x 10' 2" Max ( 4.60m Max x 3.10m Max )

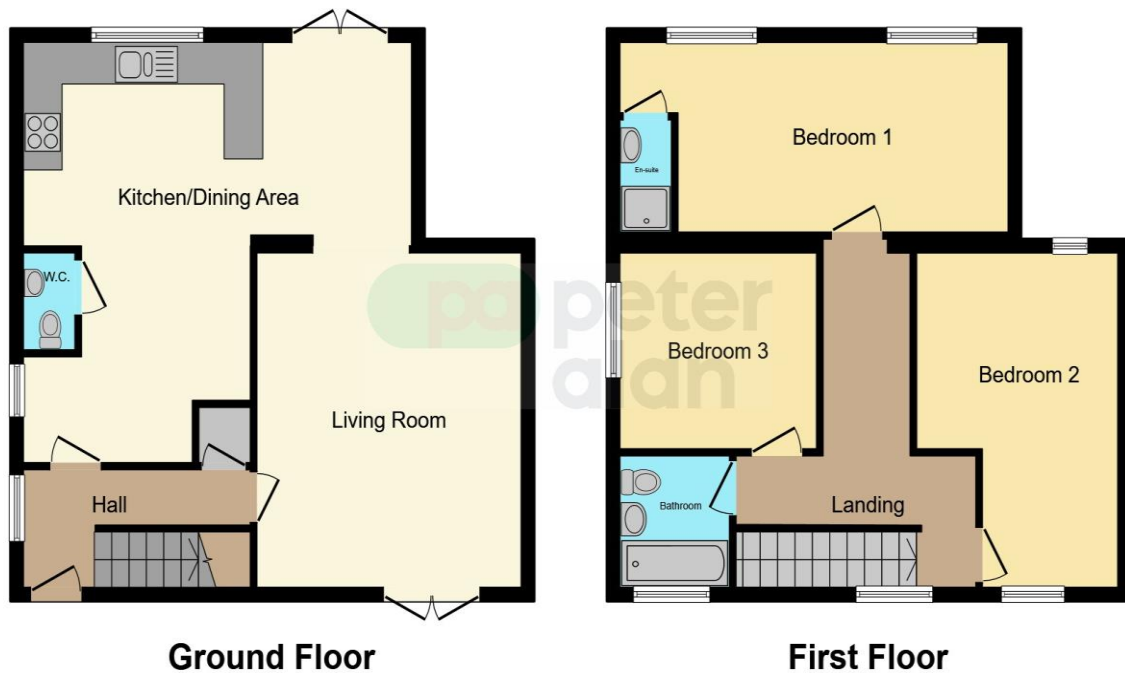
**Bedroom 3**

9' 4" Max x 10' 1" Max ( 2.84m Max x 3.07m Max )

01685 722223

merthyrdfil@peteralan.co.uk

## Floorplan



This floor plan is for illustrative purposes only. It is not drawn to scale. Any measurements, floor areas (including any total floor area), openings and orientation are approximate. No details are guaranteed, they cannot be relied upon for any purpose and they do not form part of any agreement. No liability is taken for any error, omission or misstatement. A party must rely upon its own inspection(s). Powered by [www.focalagent.com](http://www.focalagent.com)

## Important Information

Note while we endeavour to make our sales details accurate and reliable, if there is any point which is of particular interest to you, please contact the office and we will be pleased to confirm the position for you. We have not personally tested any apparatus, equipment, fixtures, fittings or services and cannot verify they are in working order or fit for their purposes. Nothing in these particulars is intended to indicate that carpets or curtains, furnishings or fittings, electrical goods (whether wired or not). Gas fires or light fittings or any other fixtures not expressly included form part of the property offered for sale. This computer generated Floorplan, if applicable, is intended as a general guide to the layout and design of the property. It is not to scale and should not be relied upon for dimensions. Tenure: We cannot confirm the tenure of the property as we have not had access to the legal documents. The buyer is advised to obtain verification from their solicitor or surveyor.

Peter Alan Limited is registered in England and Wales under company number 2073153, Registered Office is Cumbria House, 16-20 Hockliffe Street, Leighton Buzzard, Bedfordshire, LU7 1GN. VAT Registration Number is 500 2481 05. For activities relating to regulated mortgages and non-investment insurance contracts, Peter Alan Limited is an appointed representative of Connells Limited which is authorised and regulated by the Financial Conduct Authority. Connells Limited's Financial Services Register number is 302221. Most buy-to-let

