



Edward Close, offers in excess of £220,000

- council tax band C
- Close to local amenities
- Excellent public transport link
- Quiet location
- Spacious garden
- EPC Rating: D



 2  1  1



About the property

Presenting a charming semi-detached bungalow for sale, ideally suited for families and couples alike. Positioned in a quiet location, this property boasts excellent public transport links and is conveniently close to a selection of local amenities and reputable schools.

The property is in good condition and has been thoughtfully designed to provide a comfortable and spacious living environment. The interior features two well-proportioned reception rooms, offering ample space for relaxation and entertainment. The kitchen, designed with functionality in mind, is perfect for everyday cooking and dining.

This home also includes two sizable bedrooms and a bathroom, all of which are in good condition and ready for immediate occupancy. Whether you're a growing family in need of extra room or a couple looking for a space to call your own, this property is versatile to accommodate your needs.

One of the unique features of this property is the garden. This outdoor space offers a perfect setting for relaxation, recreation, and outdoor dining.



Accommodation

Frontporch

Irregular Shaped Room x (x)

Hall

Toilet

Living Room

15' 5" Max x 11' 9" Max (4.70m Max x 3.58m Max)

Hall 2

Kitchen

Irregular Shaped Room x (x)

Side Porch

Bathroom

Bedroom 1

8' 2" Max x 13' 9" Max (2.49m Max x 4.19m Max)

Bedroom 2

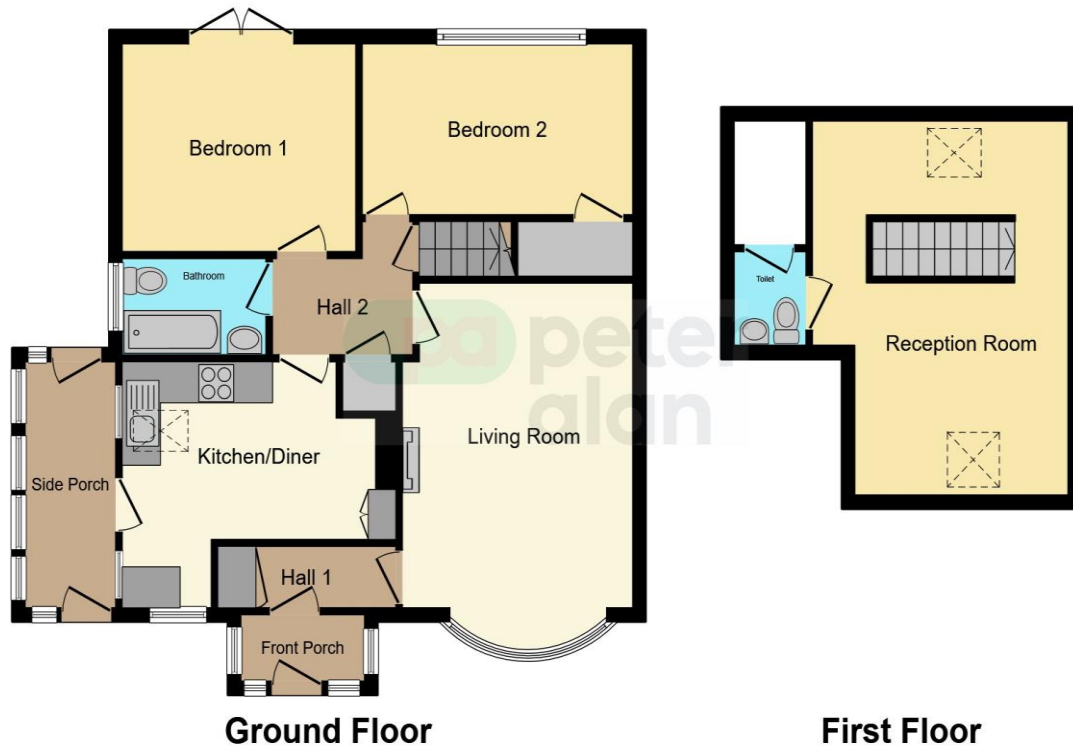
9' 7" Max x 12' Max (2.92m Max x 3.66m Max)

Reception Room

01685 722223

merthyrdfil@peteralan.co.uk

Floorplan



This floor plan is for illustrative purposes only. It is not drawn to scale. Any measurements, floor areas (including any total floor area), openings and orientation are approximate. No details are guaranteed, they cannot be relied upon for any purpose and they do not form part of any agreement. No liability is taken for any error, omission or misstatement. A party must rely upon its own inspection(s). Powered by www.focalagent.com

Important Information

Note while we endeavour to make our sales details accurate and reliable, if there is any point which is of particular interest to you, please contact the office and we will be pleased to confirm the position for you. We have not personally tested any apparatus, equipment, fixtures, fittings or services and cannot verify they are in working order or fit for their purposes. Nothing in these particulars is intended to indicate that carpets or curtains, furnishings or fittings, electrical goods (whether wired or not). Gas fires or light fittings or any other fixtures not expressly included form part of the property offered for sale. This computer generated Floorplan, if applicable, is intended as a general guide to the layout and design of the property. It is not to scale and should not be relied upon for dimensions. Tenure: We cannot confirm the tenure of the property as we have not had access to the legal documents. The buyer is advised to obtain verification from their solicitor or surveyor.

Peter Alan Limited is registered in England and Wales under company number 2073153, Registered Office is Cumbria House, 16-20 Hockliffe Street, Leighton Buzzard, Bedfordshire, LU7 1GN. VAT Registration Number is 500 2481 05. For activities relating to regulated mortgages and non-investment insurance contracts, Peter Alan Limited is an appointed representative of Connells Limited which is authorised and regulated by the Financial Conduct Authority. Connells Limited's Financial Services Register number is 302221. Most buy-to-let

