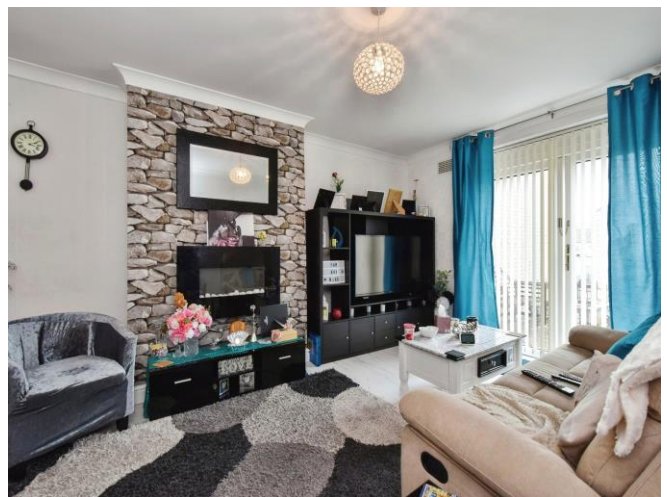




Lupin Close, £120,000

- Council Tax Band - A
- Popular location
- Well-presented
- Close to local amenities and transport links
- Front and rear gardens
- EPC Rating: C



3 1 1



About the property

A three-bedroom, mid-terrace property in a great location in Gurnos, Merthyr Tydfil. We believe this well-presented property would make a perfect investment opportunity or first-time buy.

The property briefly comprises of the entrance hall, living/dining room and kitchen. To the first floor is a bathroom and three bedrooms. To the rear of the property is a low-maintenance garden with rear access and to the front is a small patio area.

Set in a popular location in Merthyr Tydfil within proximity to transport links such as the A465 Heads of the Valleys Road and A470, train station and popular bus routes, ideal for commuting. The property also benefits from being in close proximity to Rhydyccar Leisure Park, Cyfarthfa Retail Park and Bike Park Wales,

Viewing highly recommended.



Accommodation

Hallway

Living/Dining Room

Irregular Shaped Room x (x)

Kitchen

9' 1" Max x 6' 6" Max (2.77m Max x 1.98m Max)

Rear Porch

Landing

Bedroom 1

13' 1" Max x 6' 6" Max (3.99m Max x 1.98m Max)

Bedroom 2

9' 1" Max x 6' 6" Max (2.77m Max x 1.98m Max)

Bedroom 3

6' 6" Max x 6' 6" Max (1.98m Max x 1.98m Max)

Bathroom

01685 722223

merthytydfil@peteralan.co.uk

Floorplan



This floor plan is for illustrative purposes only. It is not drawn to scale. Any measurements, floor areas (including any total floor area), openings and orientation are approximate. No details are guaranteed, they cannot be relied upon for any purpose and they do not form part of any agreement. No liability is taken for any error, omission or misstatement. A party must rely upon its own inspection(s). Powered by www.focalagent.com

Important Information

Note while we endeavour to make our sales details accurate and reliable, if there is any point which is of particular interest to you, please contact the office and we will be pleased to confirm the position for you. We have not personally tested any apparatus, equipment, fixtures, fittings or services and cannot verify they are in working order or fit for their purposes. Nothing in these particulars is intended to indicate that carpets or curtains, furnishings or fittings, electrical goods (whether wired or not). Gas fires or light fittings or any other fixtures not expressly included form part of the property offered for sale. This computer generated Floorplan, if applicable, is intended as a general guide to the layout and design of the property. It is not to scale and should not be relied upon for dimensions. Tenure: We cannot confirm the tenure of the property as we have not had access to the legal documents. The buyer is advised to obtain verification from their solicitor or surveyor.

Peter Alan Limited is registered in England and Wales under company number 2073153, Registered Office is Cumbria House, 16-20 Hockliffe Street, Leighton Buzzard, Bedfordshire, LU7 1GN. VAT Registration Number is 500 2481 05. For activities relating to regulated mortgages and non-investment insurance contracts, Peter Alan Limited is an appointed representative of Connells Limited which is authorised and regulated by the Financial Conduct Authority. Connells Limited's Financial Services Register number is 302221. Most buy-to-let