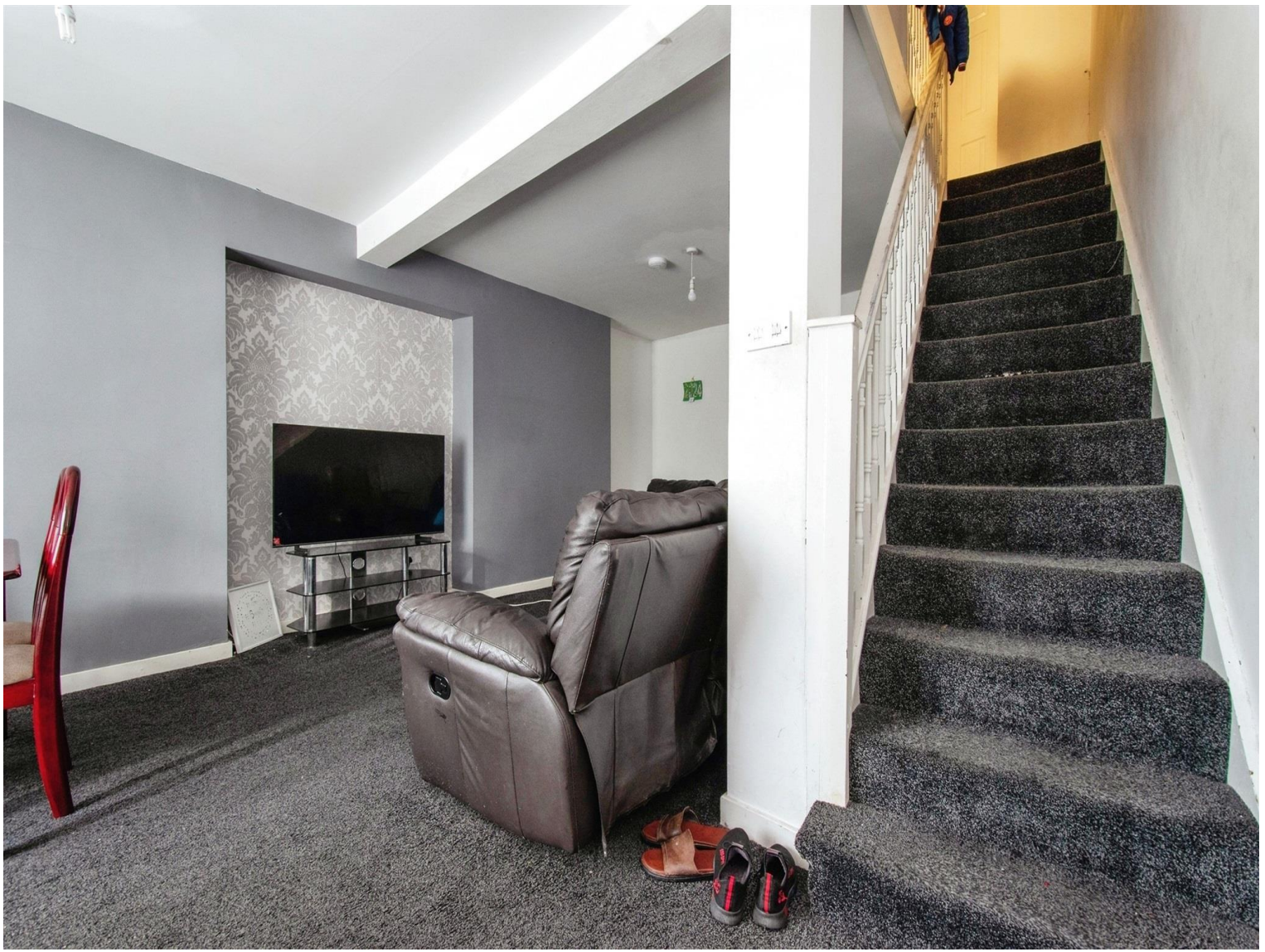




Court Terrace, offers over £90,000

- Tax band A
- Tenant-in-situ
- Great investment opportunity
- Town centre location
- Close to transport links and local amenities
- EPC Rating: D





About the property

A two bedroom mid terrace property is a great location in Merthyr Tydfil, in the heart of the South Wales Valleys. Set in a great town centre location, close to local amenities and transport links making this property a investment opportunity.

The property briefly comprises of an open plan lounge/diner, Kitchen which gives access to a small court yard. The first floor contains two good size bedrooms and a shared family bathroom. There is on street parking in close proximity to the house. and also benefits from being in walking distance to a major supermarket and the beacons arcade.

Situated in a popular residential area, close to transport links such as the A465 Heads of the Valleys road, Merthyr Tydfil Train Station and popular bus links. Close to local amenities such as Rhydyccar Leisure Park, Cyfarthfa Retail Park and Bike Park Wales.

Viewing highly recommend.



Accommodation

Living/dining Room

Window to front, stairs to first floor, door to kitchen.

Kitchen

Door to rear access, fitted cupboards.

Bedroom 1

Windows to front.

Bedroom 2

Window to rear.

Bathroom

Windows to rear.

01685 722223

merthyrdfil@peteralan.co.uk

Floorplan



This floorplan is for illustrative purposes only and is not drawn to scale. Measurements, floor-areas, openings and orientations are approximate. They should not be relied upon for any purpose and do not form any part of an agreement. No liability is taken for any error or mis-statement. All parties must rely on their own inspections.

Important Information

Note while we endeavour to make our sales details accurate and reliable, if there is any point which is of particular interest to you, please contact the office and we will be pleased to confirm the position for you. We have not personally tested any apparatus, equipment, fixtures, fittings or services and cannot verify they are in working order or fit for their purposes. Nothing in these particulars is intended to indicate that carpets or curtains, furnishings or fittings, electrical goods (whether wired or not). Gas fires or light fittings or any other fixtures not expressly included form part of the property offered for sale. This computer generated Floorplan, if applicable, is intended as a general guide to the layout and design of the property. It is not to scale and should not be relied upon for dimensions. Tenure: We cannot confirm the tenure of the property as we have not had access to the legal documents. The buyer is advised to obtain verification from their solicitor or surveyor.

Peter Alan Limited is registered in England and Wales under company number 2073153, Registered Office is Cumbria House, 16-20 Hockliffe Street, Leighton Buzzard, Bedfordshire, LU7 1GN. VAT Registration Number is 500 2481 05. For activities relating to regulated mortgages and non-investment insurance contracts, Peter Alan Limited is an appointed representative of Connells Limited which is authorised and regulated by the Financial Conduct Authority. Connells Limited's Financial Services Register number is 302221. Most buy-to-let