



Beach Road

£300,000

- Top Floor Apartment
- Two Double Bedroom
- Garage and Parking to Rear
- Close to Porthcawl Town
- Beach Front with Sea Views
- EPC Rating: C



 2
  1
  1



About the property

This beautifully presented two double bedroom first-floor apartment, ideally situated in the highly desirable location of Beach Road, Newton. Enjoying elevated sea views and just a stone's throw from the scenic Newton Beach, this apartment offers a rare opportunity to live in one of Porthcawl's most sought-after coastal settings.

Set within a well-maintained building, the property benefits from a secure communal entrance with stairs leading to the first floor. Once inside, you are welcomed by a spacious entrance hallway with access to a convenient cloakroom. The heart of the home is the generous lounge/dining room, filled with natural light and offering a comfortable space to relax or entertain while enjoying glimpses of the sea. The separate kitchen/breakfast room is fitted with a range of wall and base units and provides ample space for dining, making it a practical and sociable area for daily living.

The apartment offers two generously sized double bedrooms, both bright and airy, with space for freestanding furniture. A well-appointed bathroom serves the property, featuring a three-piece suite and neutral décor.

Externally, the property benefits from one allocated off-road parking space as well as a single garage, providing secure storage and additional convenience, a rare find so close to the coastline.

Positioned within easy walking distance of Newton village, residents will enjoy a range of local shops, pubs, and amenities right on their doorstep.



Accommodation

Top Floor Apartment

Entrance Hall

Lounge/ Dining Area

13' 2" x 12' 9" (4.01m x 3.89m)

Kitchen

11' 5" x 11' 5" (3.48m x 3.48m)

Cloackroom

Bedroom One

17' 3" max x 10' 3" max (5.26m max x 3.12m max)

Bedroom Two

10' x 11' (3.05m x 3.35m)

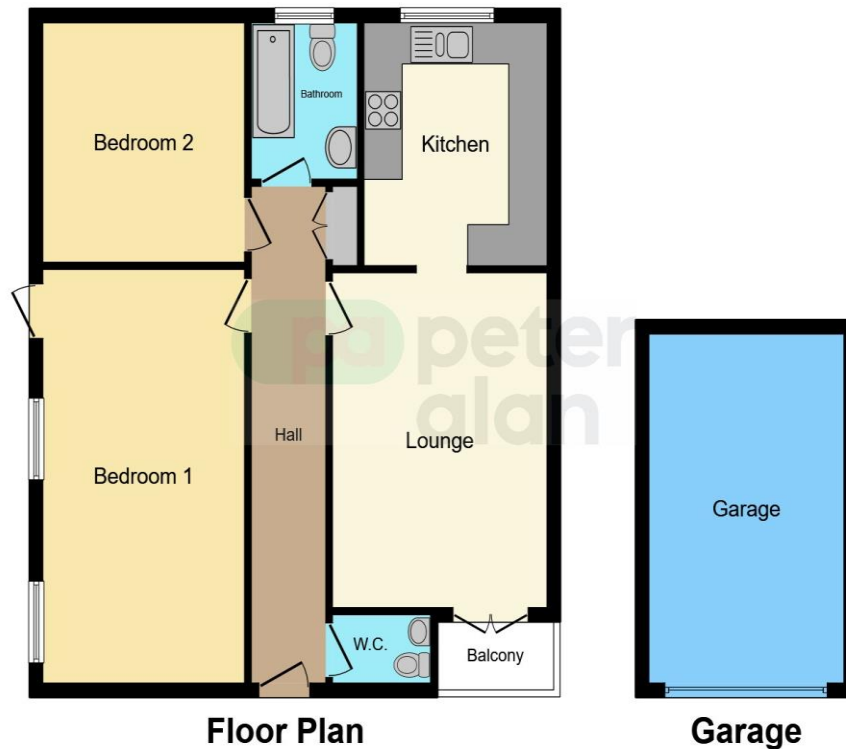
Bathroom

Balcony

01656 771600

porthcawl@peteralan.co.uk

Floorplan



This floor plan is for illustrative purposes only. It is not drawn to scale. Any measurements, floor areas (including any total floor area), openings and orientation are approximate. No details are guaranteed, they cannot be relied upon for any purpose and they do not form part of any agreement. No liability is taken for any error, omission or misstatement. A party must rely upon its own inspection(s). Powered by www.focalagent.com



Important Information

Note while we endeavour to make our sales details accurate and reliable, if there is any point which is of particular interest to you, please contact the office and we will be pleased to confirm the position for you. We have not personally tested any apparatus, equipment, fixtures, fittings or services and cannot verify they are in working order or fit for their purposes. Nothing in these particulars is intended to indicate that carpets or curtains, furnishings or fittings, electrical goods (whether wired or not). Gas fires or light fittings or any other fixtures not expressly included form part of the property offered for sale. This computer generated Floorplan, if applicable, is intended as a general guide to the layout and design of the property. It is not to scale and should not be relied upon for dimensions. Tenure: We cannot confirm the tenure of the property as we have not had access to the legal documents. The buyer is advised to obtain verification from their solicitor or surveyor.

Peter Alan Limited is registered in England and Wales under company number 2073153, Registered Office is Cumbria House, 16-20 Hockliffe Street, Leighton Buzzard, Bedfordshire, LU7 1GN. VAT Registration Number is 500 2481 05. For activities relating to regulated mortgages and non-investment insurance contracts, Peter Alan Limited is an appointed representative of Connells Limited which is authorised and regulated by the Financial Conduct Authority. Connells Limited's Financial Services Register number is 302221. Most buy-to-let