



Suffolk Place

offers in excess of £110,000

- Second Floor Flat
- Two Bedrooms
- Close To Town Centre
- Great Investment Opportunity
- EPC Rating: D



 2  1  1



About the property

A well-presented two-bedroom second-floor flat for sale in the sought-after location of Suffolk Place, Porthcawl. This charming home features an entrance hallway, a spacious lounge, a modern kitchen, two bedrooms, and a bathroom. Ideally situated close to Porthcawl Town and the stunning coastline, it offers a fantastic opportunity for first-time buyers or investors alike. Viewing is highly recommended-call 01656 771600 to arrange your appointment or book online 24/7.

Accommodation

Second Floor Apartment

Entrance Hall

Kitchen

6' 1" x 8' 3" (1.85m x 2.51m)

Bathroom

Lounge

12' 8" x 11' 1" Max (3.86m x 3.38m Max)

Bedroom One

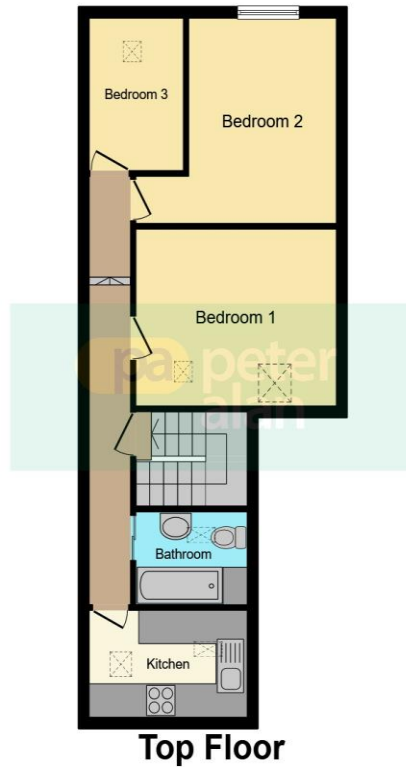
12' 1" Max x 12' 8" Max (3.68m Max x 3.86m Max)

Bedroom Two

5' 11" x 9' (1.80m x 2.74m)



Floorplan



This floorplan is for illustrative purposes only and is not drawn to scale. Measurements, floor-areas, openings and orientations are approximate. They should not be relied upon for any purpose and do not form any part of an agreement. No liability is taken for any error or mis-statement. All parties must rely on their own inspections.

Important Information

Note while we endeavour to make our sales details accurate and reliable, if there is any point which is of particular interest to you, please contact the office and we will be pleased to confirm the position for you. We have not personally tested any apparatus, equipment, fixtures, fittings or services and cannot verify they are in working order or fit for their purposes. Nothing in these particulars is intended to indicate that carpets or curtains, furnishings or fittings, electrical goods (whether wired or not). Gas fires or light fittings or any other fixtures not expressly included form part of the property offered for sale. This computer generated Floorplan, if applicable, is intended as a general guide to the layout and design of the property. It is not to scale and should not be relied upon for dimensions. Tenure: We cannot confirm the tenure of the property as we have not had access to the legal documents. The buyer is advised to obtain verification from their solicitor or surveyor.

Peter Alan Limited is registered in England and Wales under company number 2073153, Registered Office is Cumbria House, 16-20 Hockliffe Street, Leighton Buzzard, Bedfordshire, LU7 1GN. VAT Registration Number is 500 2481 05. For activities relating to regulated mortgages and non-investment insurance contracts, Peter Alan Limited is an appointed representative of Connells Limited which is authorised and regulated by the Financial Conduct Authority. Connells Limited's Financial Services Register number is 302221. Most buy-to-let