



Blundell Avenue, £375,000

- Four Bedroom Duplex Apartment
- Prime Location Close to Porthcawl Seafront
- Off Road Parking & Garage
- Modernised Interior To A High Standard
- Versatile Second Floor
- Spacious Private Garden
- EPC Rating: D



 4
  2
  2



About the property

This stunning apartment, spread across three floors, is conveniently located just a short stroll from Porthcawl seafront and town center. Thoughtfully modernized and upgraded to an exceptional standard by its current owners, the property features a spacious private garden, off-road parking, a garage, and a workshop.

Upon entering, the hallway leads you to the first floor, where you'll find a beautifully appointed kitchen with high-quality fittings, marble countertops, and space for a dining table. The living room is both inviting and elegant, complete with a feature fireplace and access to a sunroom. This floor also includes two generous double bedrooms and a newly refurbished shower room. The second floor offers a versatile open-plan space currently used as an additional living area with a kitchenette, plus two more double bedrooms and another shower room. This upper level can be separated from the rest of the property, making it ideal for use as an annex or potential holiday let.

The large, enclosed garden is perfect for outdoor entertaining, with a well-maintained lawn, thoughtfully chosen plants, and a patio area. Additional features include off-road parking, a spacious garage with lighting, power, and an electric door, as well as a sizable workshop or storage area to the rear.

Accommodation

Entrance Porch

Hallway

Landing

Living Room

12' 3" x 15' 6" (3.73m x 4.72m)

Sun Room

Kitchen/ Diner

11' 6" x 14' 6" (3.51m x 4.42m)

Bedroom One

11' x 10' (3.35m x 3.05m)

Bedroom Two

12' x 12' (3.66m x 3.66m)



Shower Room

Second Floor Landing

Open Plan Area

14' 6" x 11' 6" (4.42m x 3.51m)

Bedroom Three

7' 9" x 12' 10" (2.36m x 3.91m)

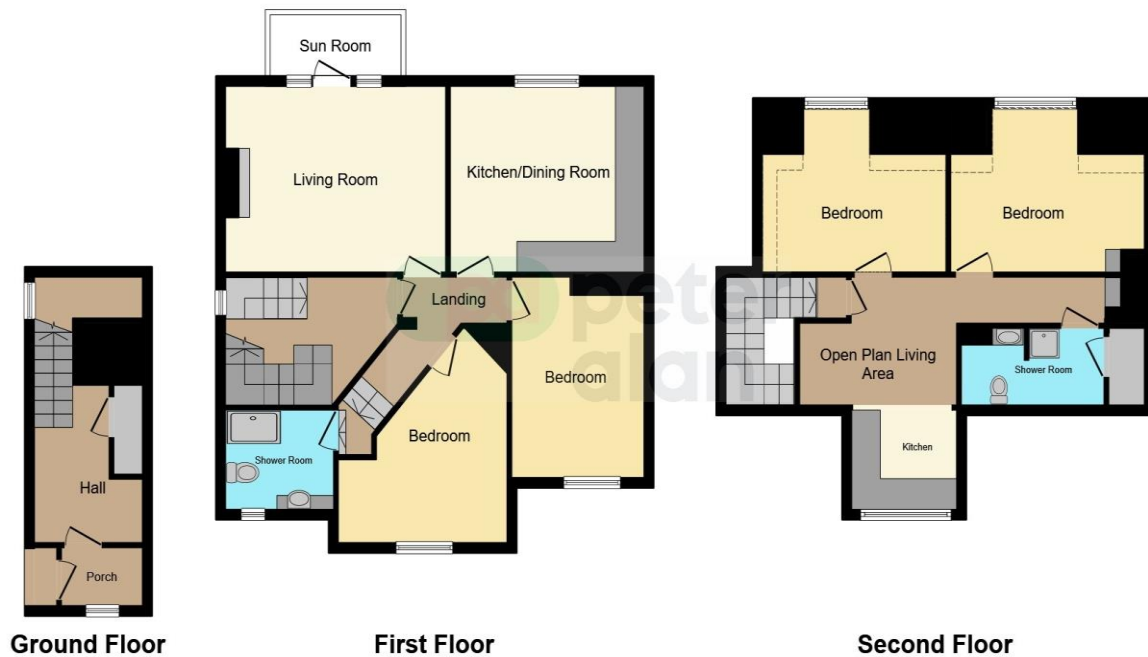
Bedroom Four

7' 9" x 12' 6" (2.36m x 3.81m)

Shower Room

External

Floorplan



This floorplan is for illustrative purposes only and is not drawn to scale. Measurements, floor-areas, openings and orientations are approximate. They should not be relied upon for any purpose and do not form any part of an agreement. No liability is taken for any error or mis-statement. All parties must rely on their own inspections.

Important Information

Note while we endeavour to make our sales details accurate and reliable, if there is any point which is of particular interest to you, please contact the office and we will be pleased to confirm the position for you. We have not personally tested any apparatus, equipment, fixtures, fittings or services and cannot verify they are in working order or fit for their purposes. Nothing in these particulars is intended to indicate that carpets or curtains, furnishings or fittings, electrical goods (whether wired or not). Gas fires or light fittings or any other fixtures not expressly included form part of the property offered for sale. This computer generated Floorplan, if applicable, is intended as a general guide to the layout and design of the property. It is not to scale and should not be relied upon for dimensions. Tenure: We cannot confirm the tenure of the property as we have not had access to the legal documents. The buyer is advised to obtain verification from their solicitor or surveyor.

Peter Alan Limited is registered in England and Wales under company number 2073153, Registered Office is Cumbria House, 16-20 Hockliffe Street, Leighton Buzzard, Bedfordshire, LU7 1GN. VAT Registration Number is 500 2481 05. For activities relating to regulated mortgages and non-investment insurance contracts, Peter Alan Limited is an appointed representative of Connells Limited which is authorised and regulated by the Financial Conduct Authority. Connells Limited's Financial Services Register number is 302221. Most buy-to-let