



Philadelphia Mews

£130,000

- Two bedrooms
- Allocated off road parking
- Conveniently located
- Located close to Porthcawl town and sea front
- Stair lift
- Council Tax - band C
- EPC Rating: D



🛏️ 2 🚿 1 🛋️ 1



About the property

This purpose-built first-floor apartment is ideally situated near the town centre and its amenities. It offers designated off-road parking at the rear, along with additional spaces for visitors.

The communal entrance features a staircase leading to the first floor. Inside the apartment, the hallway provides access to all rooms. The lounge includes a side-facing window, and the kitchen is equipped with a variety of wall and base units, worktops, and tiled splashbacks. It also includes a built-in electric oven, gas hob with extractor, and space for additional appliances. The apartment features two bedrooms and a shower room. Viewing is highly recommended.

Accommodation

Communal Entrance

Enter through communal door and up to first floor. Stair lift if needed.

Entrance Hall

Fitted carpet, radiator and intercom system.

Lounge

12' 1" x 11' 1" (3.68m x 3.38m)

Two windows to front, fitted carpet, coving to ceiling and radiator.

Kitchen

10' 1" x 8' (3.07m x 2.44m)

Window to rear. Fitted with a range of wall and base units with work tops over, built in gas hob, oven, extractor fan, space for appliances, boiler and sink. Tiled splash back and flooring.



Bedroom One

9' 1" x 10' 1" (2.77m x 3.07m)

Window to side, fitted carpet, coving to ceiling, built in wardrobe and radiator.

Bedroom Two

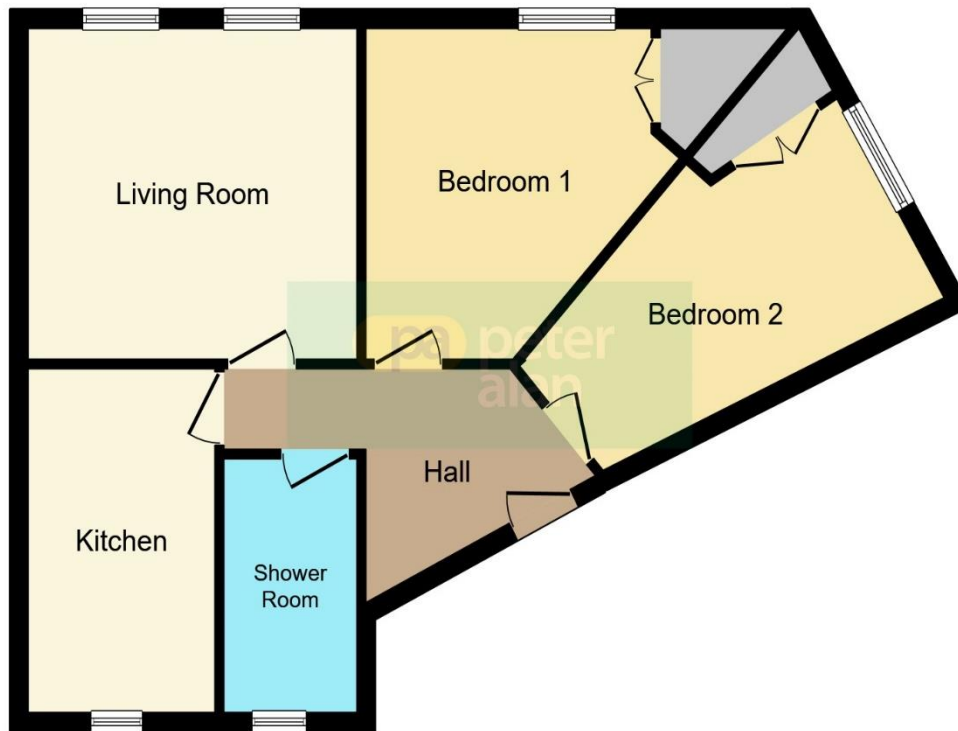
13' x 9' 1" narrowing to (3.96m x 2.77m narrowing to)

Window to side, fitted carpet, coving to ceiling, radiator and coving to ceiling.

Bathroom

Suite comprising of shower, wash hand basin and Wc.
Window

Floorplan



This floorplan is for illustrative purposes only and is not drawn to scale. Measurements, floor-areas, openings and orientations are approximate. They should not be relied upon for any purpose and do not form any part of an agreement. No liability is taken for any error or mis-statement. All parties must rely on their own inspections.

Important Information

Note while we endeavour to make our sales details accurate and reliable, if there is any point which is of particular interest to you, please contact the office and we will be pleased to confirm the position for you. We have not personally tested any apparatus, equipment, fixtures, fittings or services and cannot verify they are in working order or fit for their purposes. Nothing in these particulars is intended to indicate that carpets or curtains, furnishings or fittings, electrical goods (whether wired or not). Gas fires or light fittings or any other fixtures not expressly included form part of the property offered for sale. This computer generated Floorplan, if applicable, is intended as a general guide to the layout and design of the property. It is not to scale and should not be relied upon for dimensions. Tenure: We cannot confirm the tenure of the property as we have not had access to the legal documents. The buyer is advised to obtain verification from their solicitor or surveyor.

Peter Alan Limited is registered in England and Wales under company number 2073153, Registered Office is Cumbria House, 16-20 Hockliffe Street, Leighton Buzzard, Bedfordshire, LU7 1GN. VAT Registration Number is 500 2481 05. For activities relating to regulated mortgages and non-investment insurance contracts, Peter Alan Limited is an appointed representative of Connells Limited which is authorised and regulated by the Financial Conduct Authority. Connells Limited's Financial Services Register number is 302221. Most buy-to-let