





 2  2  1

Apartment 48, The 18th At The Links, Rest Bay Porthcawl

£470,000

 pa black

01656 771600
porthcawl@peteralan.co.uk



About the property

Last Remaining Award-winning apartment - The Links won Best Residential development at the Cardiff Property Awards!

This apartment can come with all the furniture in it so is a perfect rental or short term let opportunity - ready to go.

An exceptional two double bedroom apartment situated within the new build phase, overlooking the spectacular rural views of the Royal Porthcawl Golf Club.

Sympathetically designed to blend old with new, The Links, features the refurbishment and conversion of a Victorian Grade-II listed building along with a collection of carefully designed new build properties.

This high-specification property features open plan kitchen/dining/living room forming a fantastic modern living space. Benefitting from outside space in the form of a terrace and lawn area, adjacent to the golf club and green open space beyond.

The property is complete with underfloor heating, Karndean flooring, carpets, wardrobes and integrated Bosch appliances as standard and two allocated parking spaces.

The apartments centre around a beautifully landscaped communal courtyard which offers a tranquil outdoor area for residents to enjoy.

Accommodation

About The Links

Sympathetically designed to blend old with new, The Links, features the refurbishment and conversion of a Victorian Grade-II listed building along with a collection of carefully designed new build properties. Standing proudly overlooking South Wales's top surfing beach with its golden sands, the new homes are a stone's throw from the Welsh Coast Path. Keen golfers will also be impressed as it's next to the award-winning Royal Porthcawl Golf Club, the spectacular course can be seen from many of the apartments in Phase 2 with fantastic views across the green to the sea beyond.

About The Developer

Acorn is an independent development and regeneration specialist that has, for over 25 years, successfully created a range of residential led refurbishment and new build schemes.

Kitchen / Living / Dining

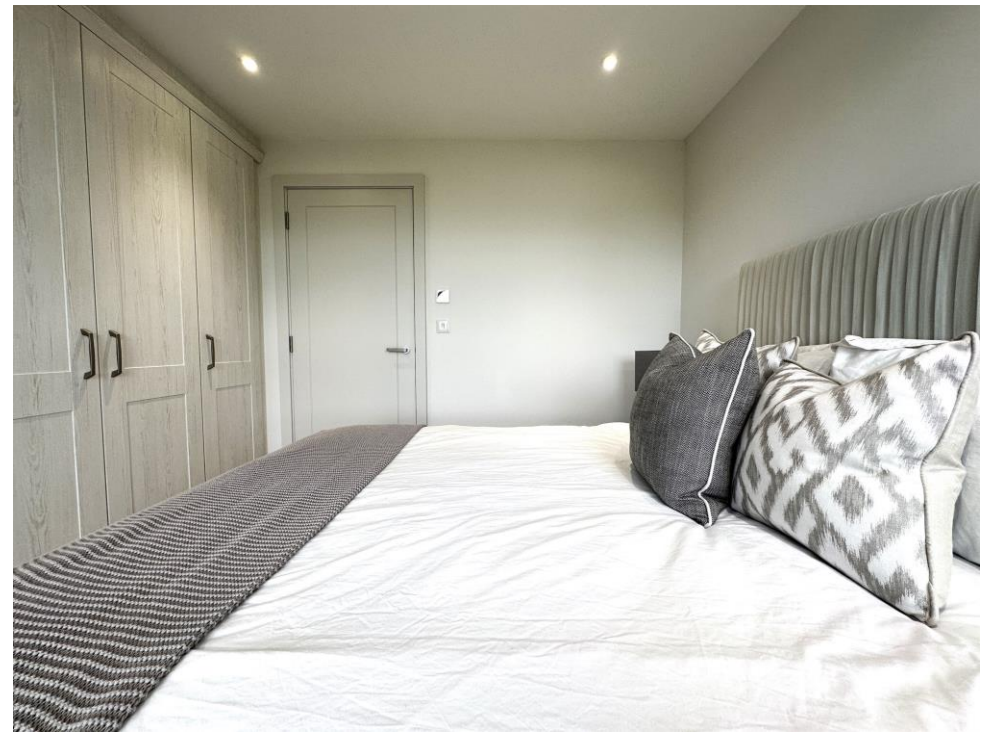
24' 4" x 23' 2" (7.42m x 7.06m)
Primary Bedroom

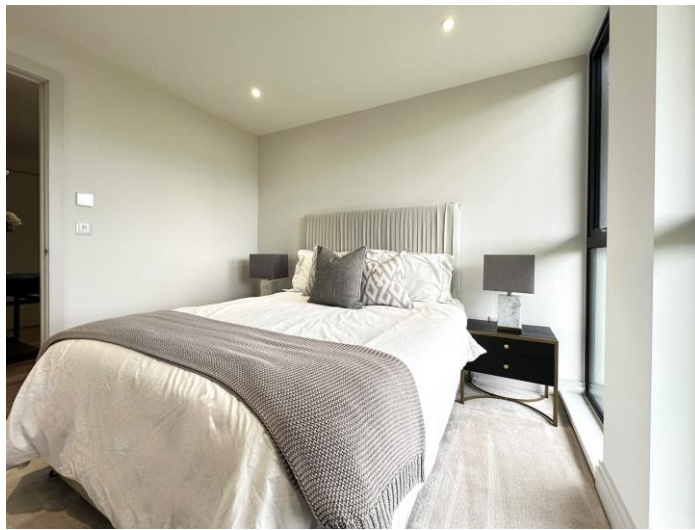
13' 7" x 12' (4.14m x 3.66m)
En-Suite

Second Bedroom

11' 3" x 9' 9" (3.43m x 2.97m)
Bathroom

Terrace





Specifications

- Modern open plan living
- Contemporary fitted kitchens with stone worktop
- Integrated appliances
- Flooring & underfloor heating throughout
- Contemporary white sanitary ware to bathroom
- Landscaped communal courtyard
- Electric car charging points
- Allocated parking







Important Information

Note while we endeavour to make our sales details accurate and reliable, if there is any point which is of particular interest to you, please contact the office and we will be pleased to confirm the position for you. We have not personally tested any apparatus, equipment, fixtures, fittings or services and cannot verify they are in working order or fit for their purposes. Nothing in these particulars is intended to indicate that carpets or curtains, furnishings or fittings, electrical goods (whether wired or not), Gas fires or light fittings or any other fixtures not expressly included form part of the property offered for sale. This computer generated Floorplan, if applicable, is intended as a general guide to the layout and design of the property. It is not to scale and should not be relied upon for dimensions. Tenure: We cannot confirm the tenure of the property as we have not had access to the legal documents. The buyer is advised to obtain verification from their solicitor or surveyor.