



Jennings Building

£235,000

- Harbour side Location
- Loft Style Apartment
- Views Over Coastline & Promenade
- Council Tax Band - C
- EPC Rating: D





About the property

An exciting opportunity to acquire one of these high specification apartments located in the iconic landmark building known locally as the Jennings Building situated on Porthcawl Harbour. Within a short distance there is access to the town with its numerous award winning restaurants, promenade, boutique shops and beaches. Communal entrance with stairs and lift leading up to the apartments. The apartment itself has an entrance hallway with access to a cloakroom and storage cupboard with housing for a washing machine. There is a study also located off the hallway. The open plan living area has a vaulted ceiling with exposed beams and stone walls along with views along the promenade and coast. The kitchen has built in appliances and granite worktops. The bedroom has a walk in wardrobe and an en-suite shower room and a glass balustrade overlooking the living area along with a mezzanine area with glass balustrade and glass insert to the floor. The apartment comes with allocated parking.





Accommodation

Entrance Hallway

Access to the study and cloakroom. Intercom. Access to the living area. Cupboard with provision for washing machine. Fitted carpet

Cloakroom

Built in Vanity hand wash basin with storage under and Wc.

Study

9' x 6' (2.74m x 1.83m)
Fitted carpet and Wall mounted heater.

Living Area & Kitchen

19' 3" x 12' 9" (5.87m x 3.89m)
Feature exposed Stone Wall with two windows with granite window sill and views. Vaulted ceiling with exposed beams and five Skylights. Open plan Kitchen fitted with Spotlights, range of units, Granite work top with matching upstand. Built in appliances to include Dishwasher, Fridge Freezer, Oven and Hob. Wall mounted heater, under stair storage. Stairs leading up to the bedroom

Bedroom

19' 3" x 12' 9" (5.87m x 3.89m)
Glass Balustrade over looking Living area. Vaulted ceiling with exposed beams. Views of the coastline via Skylights. Fitted carpet, wall mounted heater. Access to walk in wardrobe with hanging rail and built in shelving. Access to shower room.

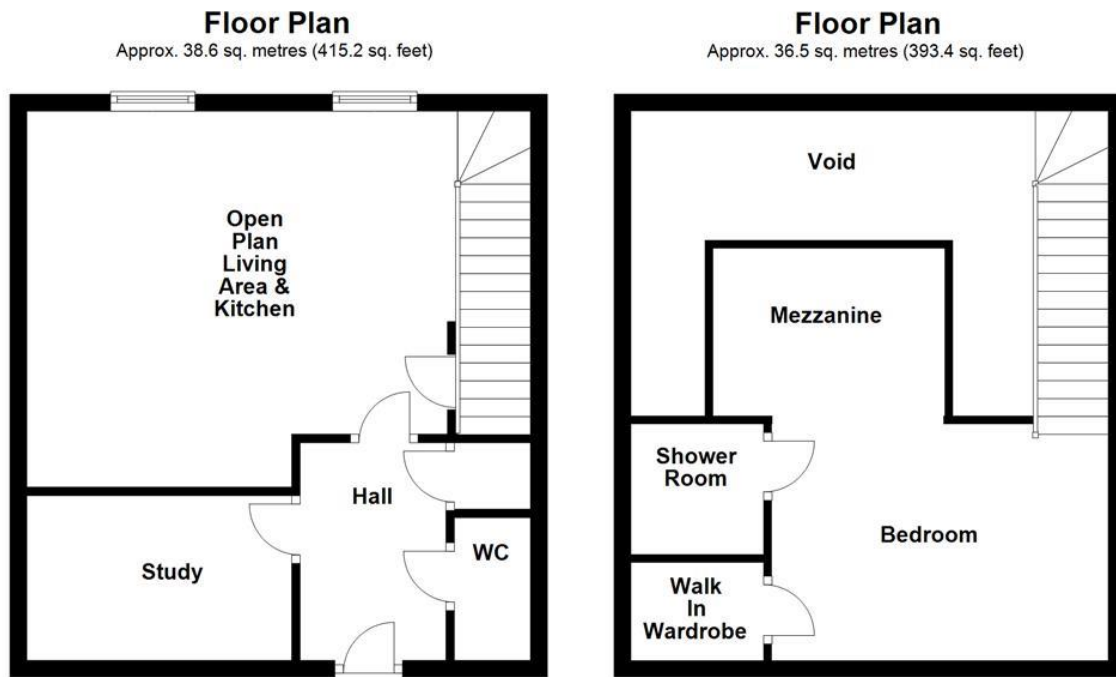
Mezzanine

8' x 6' (2.44m x 1.83m)
Open plan to the bedroom. Glass balustrade and wood effect flooring with glass panel looking into the living area

Shower Room

Suite comprising shower enclosure with screen, Wc, wash hand basin, tiled splashback, under floor heating.

Floorplan



Total area: approx. 75.1 sq. metres (808.6 sq. feet)

Important Information

Note while we endeavour to make our sales details accurate and reliable, if there is any point which is of particular interest to you, please contact the office and we will be pleased to confirm the position for you. We have not personally tested any apparatus, equipment, fixtures, fittings or services and cannot verify they are in working order or fit for their purposes. Nothing in these particulars is intended to indicate that carpets or curtains, furnishings or fittings, electrical goods (whether wired or not). Gas fires or light fittings or any other fixtures not expressly included form part of the property offered for sale. This computer generated Floorplan, if applicable, is intended as a general guide to the layout and design of the property. It is not to scale and should not be relied upon for dimensions. Tenure: We cannot confirm the tenure of the property as we have not had access to the legal documents. The buyer is advised to obtain verification from their solicitor or surveyor.