



Esplanade House

£270,000

- Balcony with Coastline Views
- Located on Porthcawl Seafront
- No On Going Chain
- Council Tax Band D
- Allocated Secure Parking
- EPC Rating: C



🛏 2 🚿 1 🛋 1



About the property

Located on Porthcawl Seafront with walking distance to Porthcawl town is this purpose built second floor apartment with sea views from the balcony. The two bedroom apartment is accessed via an entry system and has allocated gated parking and a balcony. Entrance hallway storage cupboards. The kitchen area is open plan to the living area and is fitted with a range of wall and base units with worktops. The living area has a wooden floor and access to the balcony. The main bedroom overlooks the balcony with views and access to an en-suite shower room. The second bedroom is at the rear of the apartment. Completing the accommodation is the bathroom. There is a lift within the building and undercroft parking. To arrange a viewing please contact Peter Alan Porthcawl 01656 771600.



Accommodation

Communal Entrance

Enter into the main communal area of the building with access to the staircase, undercroft garage and lift.

Entrance Hallway

Access to the both bedrooms, bathroom and main living area. Storage cupboard and airing cupboard.

Kitchen & Living Area

28' 2" x 11' (8.59m x 3.35m)
Open plan room with access to the balcony. The kitchen has a range of wall and base units with worktop over. Sink and drainer. Built in oven and hob plus fridge freezer. The remainder of the room is allocated to the living and dining area Window to the side of the building with views and access onto the balcony which offers views along the Seafront and of the sea.

Bedroom One

19' 1" Maximum x 8' 11" (5.82m Maximum x 2.72m)
Window looking on the balcony with views. Fitted carpet. Access to the en-suite shower room

En-Suite Shower Room

Suite comprising shower enclosure, wash hand basin and Wc. Tiled walls.

Bedroom Two

11' 6" x 10' (3.51m x 3.05m)
Window to the rear of the apartment. Fitted carpet

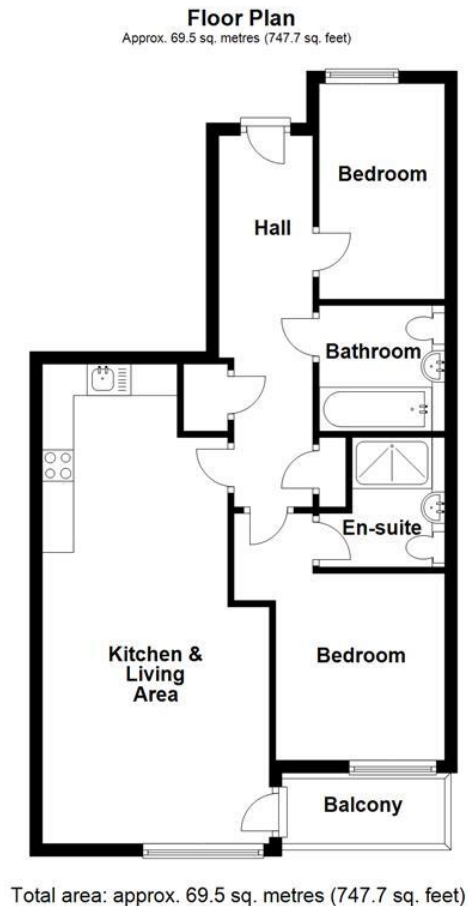
Bathroom

Suite comprising bath with wash hand basin and Wc . Tiled walls.

Balcony

Accessed via the living area. Views over The Grand Pavilion, The Promenade and Coastline

Floorplan



Important Information

Note while we endeavour to make our sales details accurate and reliable, if there is any point which is of particular interest to you, please contact the office and we will be pleased to confirm the position for you. We have not personally tested any apparatus, equipment, fixtures, fittings or services and cannot verify they are in working order or fit for their purposes. Nothing in these particulars is intended to indicate that carpets or curtains, furnishings or fittings, electrical goods (whether wired or not). Gas fires or light fittings or any other fixtures not expressly included form part of the property offered for sale. This computer generated Floorplan, if applicable, is intended as a general guide to the layout and design of the property. It is not to scale and should not be relied upon for dimensions. Tenure: We cannot confirm the tenure of the property as we have not had access to the legal documents. The buyer is advised to obtain verification from their solicitor or surveyor.

Peter Alan Limited is registered in England and Wales under company number 2073153, Registered Office is Cumbria House, 16-20 Hockliffe Street, Leighton Buzzard, Bedfordshire, LU7 1GN. VAT Registration Number is 500 2481 05. For activities relating to regulated mortgages and non-investment insurance contracts, Peter Alan Limited is an appointed representative of Connells Limited which is authorised and regulated by the Financial Conduct Authority. Connells Limited's Financial Services Register number is 302221. Most buy-to-let