

[martin-thornton.com](http://martin-thornton.com)  
01484 508000



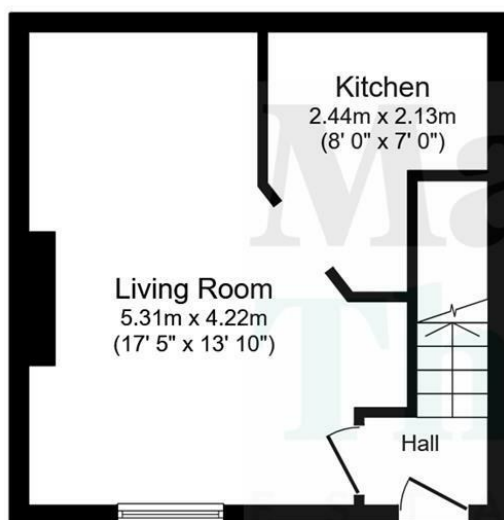
## Chapel Terrace, Crosland Moor Huddersfield,

**Offers in the region of  
£80,000**

This two-bedroom terraced property is conveniently positioned for local amenities. It may well prove suitable to the first time buyer looking to access nearby M62 motorway networks or the buy to let investor. The accommodation comprises an entrance hall, living room and kitchen on the ground floor. On the first floor are two bedrooms and a bathroom. There is also a useful cellar. The property benefits from a gas-fired central heating system and uPVC double-glazing. Externally, there is a patio area, outside light and water points and a useful store.

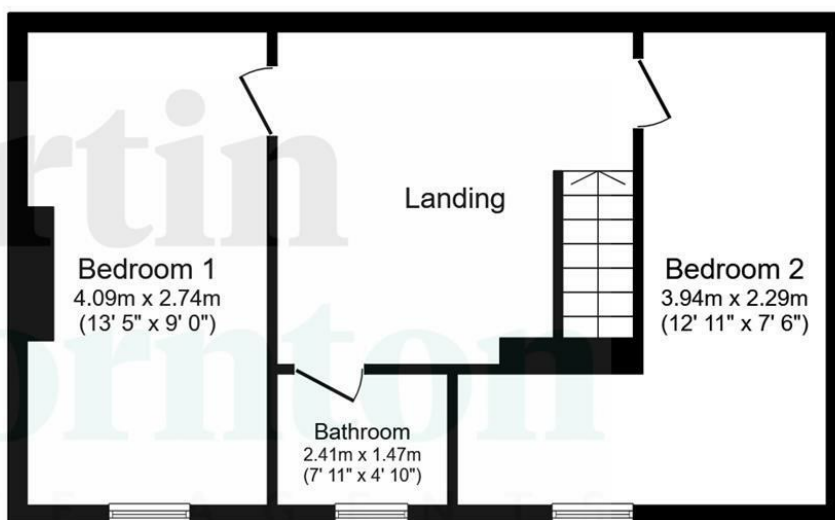
# Chapel Terrace, Crosland Moor Huddersfield,

## Floorplan



**Ground Floor**

Floor area 27.4 sq.m. (295 sq.ft.)



**First Floor**

Floor area 47.7 sq.m. (513 sq.ft.)

Total floor area: 75.1 sq.m. (808 sq.ft.)

This floor plan is for illustrative purposes only. It is not drawn to scale. Any measurements, floor areas (including any total floor area), openings and orientations are approximate. No details are guaranteed, they cannot be relied upon for any purpose and do not form any part of any agreement. No liability is taken for any error, omission or misstatement. A party must rely upon its own inspection(s). Powered by [www.Propertybox.io](http://www.Propertybox.io)

# Chapel Terrace, Crosland Moor Huddersfield,

## Details



### Entrance Hall

A uPVC door with a double-glazed insert opens to the entrance hall, where there are hanging hooks, a radiator and a ceiling light point. A staircase leads up to the first floor landing and a timber door gives access to the living room.

### Living Room

This spacious reception has a uPVC double-glazed window to the rear elevation. There is coving to the ceiling, a ceiling light point and a radiator. An archway leads through to the kitchen.



### Kitchen

The kitchen has a wall cupboard, base units, drawers, roll-edge worktops and a stainless steel sink unit. Integrated appliances comprise an oven and hob with a filter hood above. There is plumbing for an automatic washing machine, space for a freestanding fridge freezer, laminate style flooring and ceiling downlighting. A folding timber door gives access to the cellar.



### Cellar

The useful cellar area could be used for storage.

### First Floor Landing

The landing has a ceiling light point, a radiator and access can be gained to the following rooms:



# Chapel Terrace, Crosland Moor Huddersfield,

## Details



### Bedroom One

This double bedroom is positioned at the front of the property and has a uPVC double-glazed window. It has a ceiling light point and a radiator.



### Bedroom Two

This bedroom has a uPVC double-glazed window and a radiator. It is home to the Procombi central heating boiler.



### House Bathroom

The white suite comprises a panelled bath with a curved splash screen and a mains fed shower over, a pedestal wash hand basin with a mixer tap and a low-level WC. There is vinyl flooring, appropriate tiling to the walls, ceiling downlighting and a chrome ladder style radiator. To the rear elevation, there is a uPVC double-glazed window.



# Chapel Terrace, Crosland Moor Huddersfield,

## Details



### Externally

There is a patio area, outside light and water points and a useful store.



### Tenure

The vendor informs us the property is Freehold.

# Chapel Terrace, Crosland Moor Huddersfield,

Directions

