

martin-thornton.com
01484 508000



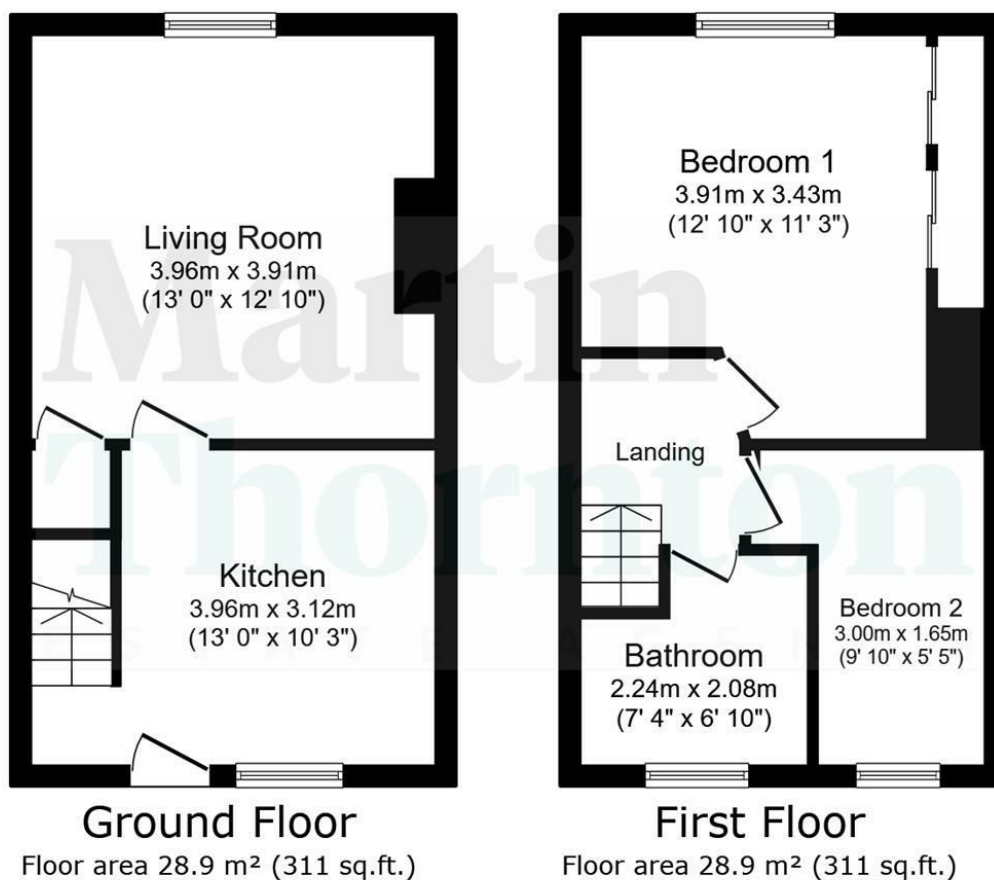
Woodside Cottages, Milnsbridge Huddersfield,

**Offers in the region of
£90,000**

This two-bedroomed over-dwelling is set back from the road and enjoys a southerly aspect. The property is a short distance from the village centre and would be a perfect first home or a buy-to-let investment. It incorporates gas-fired central heating and uPVC double glazing. The accommodation comprises a kitchen, a good sized living room with a southerly aspect and a useful cellar. On the first floor are two bedrooms and a bathroom. Externally, there is a small garden area at the front and informal parking.

Woodside Cottages, Milnsbridge Huddersfield,

Floorplan



TOTAL: 57.8 m² (622 sq.ft.)

This floor plan is for illustrative purposes only. It is not drawn to scale. Any measurements, floor areas (including any total floor area), openings and orientations are approximate. No details are guaranteed, they cannot be relied upon for any purpose and do not form any part of any agreement. No liability is taken for any error, omission or misstatement. A party must rely upon its own inspection(s). Powered by www.Propertybox.io

Woodside Cottages, Milnsbridge Huddersfield,

Details



Entrance

An external uPVC door with an opaque glazed panel gives access to the kitchen.

Kitchen

The kitchen has wall cupboards, base units, working surfaces and a one-and-a-half bowl stainless steel sink with a mixer tap. There is space for a freestanding gas cooker, a fridge freezer and plumbing for an automatic washer. This room houses the Ideal boiler for the central heating system and has a uPVC window, a radiator and a staircase rising to the first floor. A timber and glazed door leads to the living room.



Living Room

This good sized reception room has a timber fire surround with inlay and hearth, home to a living flame gas fire. There is lighting to the alcoves, coving to the ceiling and a uPVC window enjoying a southerly aspect over the valley, making the room particularly light and bright. The room has a radiator and access down to the cellar.



First Floor Landing

From the kitchen, the staircase rises to the first floor landing which has access to the loft area which is used for storage.

Woodside Cottages, Milnsbridge Huddersfield,

Details



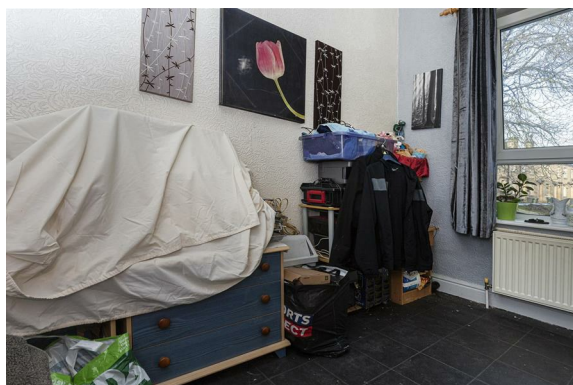
Bedroom One

This double bedroom has a built-in mirror-fronted double wardrobe and a uPVC window enjoying a southerly aspect with views across the valley. There is also a radiator.



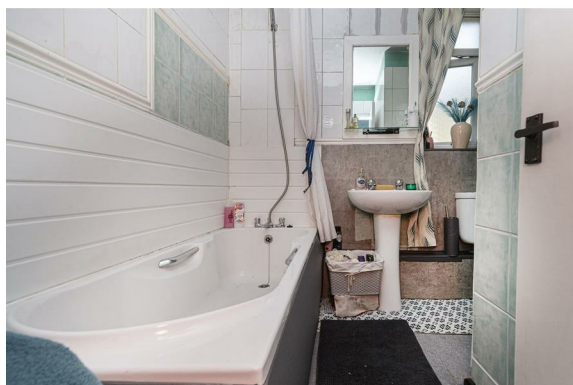
Bedroom Two

This single bedroom has a side uPVC window, space for furniture and a radiator.



Bathroom

The bathroom has a three-piece suite comprising a panelled bath with a shower attachment from the mixer tap, a pedestal wash hand basin and a low-level WC. There is part tiling to the walls, an upright chrome ladder-style radiator and an obscure uPVC window.



Woodside Cottages, Milnsbridge Huddersfield,

Details



External Details

The property is set back from the road and has informal parking. In front of the property is a walled garden area with external water.

Tenure

The vendor has informed us that the property is Leasehold and we await further information.

Woodside Cottages, Milnsbridge Huddersfield,

Directions

