

[martin-thornton.com](http://martin-thornton.com)  
01484 508000



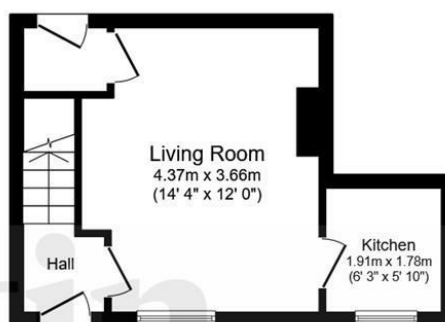
**Woodhead Road,  
Huddersfield,**

**£700 Per month**

This three-bedroom through terraced property is conveniently placed for local amenities, public transport and the town centre. The first floor accommodation is much larger than the ground floor. The property has a gas-fired central heating system and uPVC double glazing. The accommodation comprises an entrance lobby, living room and separate kitchen. On the first floor are three good sized bedrooms, bathroom and separate WC. Externally, there is a small rear yard/garden area.

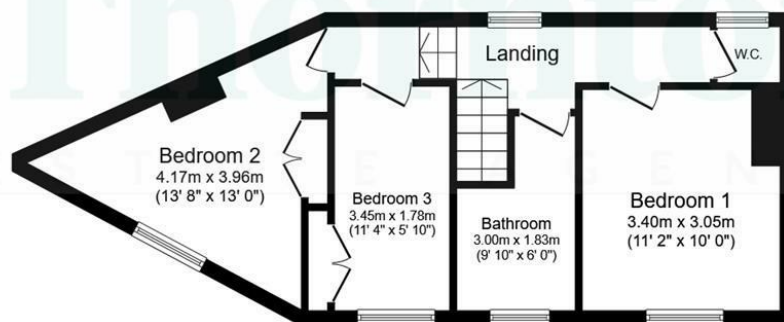
**Woodhead Road,  
Huddersfield,**

**Floorplan**



### Ground Floor

Floor area 23.4 m<sup>2</sup> (252 sq.ft.)



### First Floor

Floor area 40.9 m<sup>2</sup> (441 sq.ft.)

**TOTAL: 64.4 m<sup>2</sup> (693 sq.ft.)**

This floor plan is for illustrative purposes only. It is not drawn to scale. Any measurements, floor areas (including any total floor area), openings and orientations are approximate. No details are guaranteed, they cannot be relied upon for any purpose and do not form any part of any agreement. No liability is taken for any error, omission or misstatement. A party must rely upon its own inspection(s). Powered by [www.Propertybox.io](http://www.Propertybox.io)

# Woodhead Road, Huddersfield,

## Details

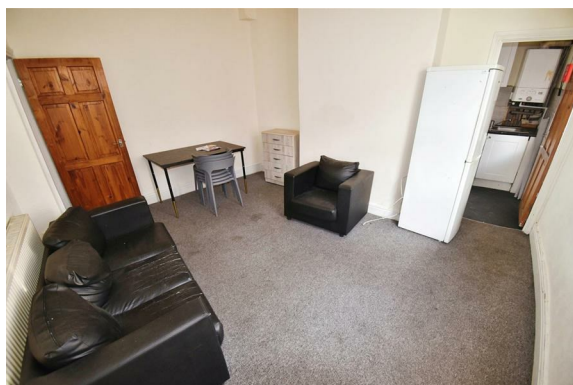


### Entrance Lobby

An external uPVC door with an opaque glazed over-light gives access to the entrance lobby where a staircase rises to the first floor accommodation. A door leads to the living room.

### Living Room

This good sized reception room runs the full depth of the property and has plenty of space for furniture, a uPVC window and a radiator. A panelled door gives access to a rear lobby.



### Rear Lobby

The lobby has a useful understairs storage area and a uPVC door providing access to the rear garden/yard area.

### Kitchen

The kitchen has wall cupboards, base units, working surfaces with tiled splash-backs and a stainless steel sink. There is a freestanding electric cooker, a washing machine and a fridge freezer has previously been positioned in the living room. The kitchen houses the boiler for the gas-fired central heating system and has a uPVC window.



### First Floor Landing

From the entrance lobby, the staircase rises to the first floor landing which has a uPVC window. The property is much larger on the first floor than on the ground floor.

# Woodhead Road, Huddersfield,

## Details



### Bedroom One

This double bedroom is positioned at the front of the property and has space for furniture, a uPVC window and a radiator.



### Bedroom Two

This double bedroom is an unusual shape, being triangular, and has a built-in double wardrobe and open shelving. There is a uPVC window and a radiator.



### Bedroom Three

This good sized third bedroom has a built-in treble wardrobe, a uPVC window and a radiator.



# Woodhead Road, Huddersfield,

## Details



### Bathroom

The white bathroom suite comprises a panelled bath with Triton Riba independent shower over and a pedestal wash hand basin.



### Separate WC

The WC is positioned at the rear of the property with a low-level toilet and a rear uPVC window.

### External Details

At the rear of the property is a small yard style garden area.

# Woodhead Road, Huddersfield,

Directions

