

martin-thornton.com
01484 508000



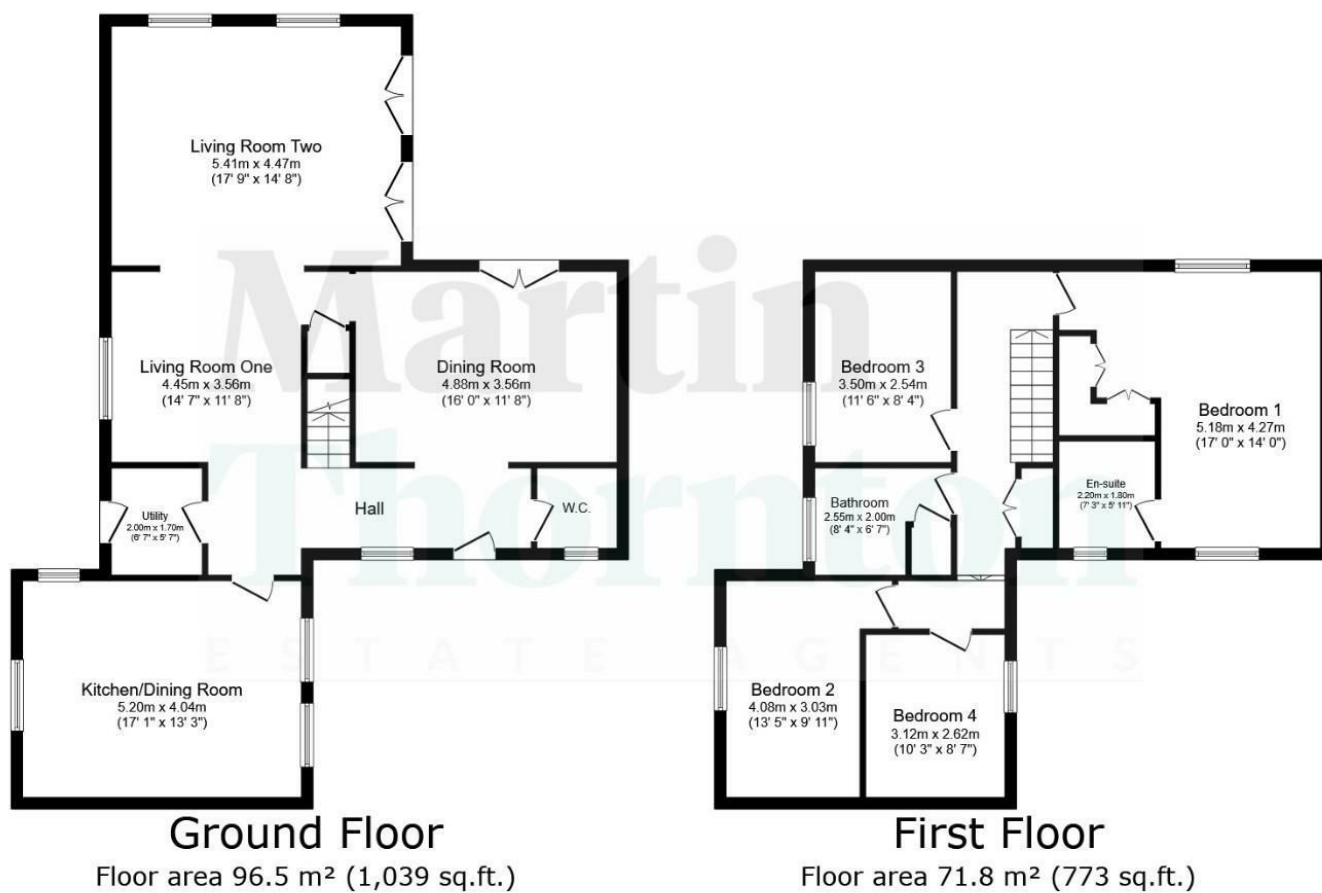
Fenay Hall, Fenay Lane, Fenay Bridge Huddersfield,

£2,295 Per month

This four-bedroom property is set back from Fenay Lane and enjoys a hamlet style setting in this cobbled courtyard on the edge of Woodsome Valley, a short distance from amenities within Almondbury. The accommodation comprises an entrance hall, downstairs WC, dining kitchen with integrated appliances, utility, large living room, adjoining dining room and separate sitting room. On the first floor are four bedrooms, the master with a stylish en suite, and a family shower room. There is a gas-fired central heating system and majority sealed unit double glazing. Externally, the property is approached down a long tree-lined driveway. It has a double garage and an enclosed mature garden with lawns and a large stone flagged patio area (accessible from the living room and sitting room).

Fenay Hall, Fenay Lane, Fenay Bridge Huddersfield,

Floorplan



TOTAL: 168.3 m² (1,812 sq.ft.)

This floor plan is for illustrative purposes only. It is not drawn to scale. Any measurements, floor areas (including any total floor area), openings and orientations are approximate. No details are guaranteed, they cannot be relied upon for any purpose and do not form any part of any agreement. No liability is taken for any error, omission or misstatement. A party must rely upon its own inspection(s). Powered by www.Propertybox.io

Fenay Hall, Fenay Lane, Fenay Bridge Huddersfield,

Details



Entrance Hall



A broad timber entrance door with a glazed over-light gives access from the cobbles courtyard into the hallway. This is particularly light and bright, incorporating a staircase with oak and glass, rising to the first floor accommodation. Windows provide an abundance of natural lighting and there is decorative deep cornice coving, a radiator and access to the downstairs WC.

Downstairs WC



This has a two-piece white suite with a pedestal wash hand basin and a low-level WC. There is half-height wall tiling, tiling to the floor, a radiator and opaque windows incorporating New England style shutters.

Dining Kitchen



From the hallway, an oak and glazed door leads into the dining kitchen. This well-appointed, spacious eating and entertaining room is light and bright with windows to three aspects. The two larger windows overlook the courtyard and incorporate New England style shutters. The kitchen area has an array of wall cupboards and base units with granite worktops, matching upstands and splashbacks. There are sunken twin stainless steel sinks with mixer taps and adjoining grooved draining areas. Integrated appliances include a double oven, five-ring gas hob with canopy style filter hood, dishwasher, fridge and freezer. The room has ceiling downlighting, porcelain style floor tiling, plenty of space for a formal dining table and twin radiators.

Utility



This has base units with a roll-edge worktop, a circular

Fenay Hall, Fenay Lane, Fenay Bridge Huddersfield,

Details



stainless steel sink and plumbing for a washing machine. Within this room is the boiler for the central heating system. There is a tiled floor and a side external timber door.

Living Room One



This is a large open plan flexible space, be it as a formal dining room, sitting room or study area. It is light and bright with a side sealed unit double glazed sash window. An oak and glass staircase rises to the first floor accommodation and beneath this is a useful store cupboard with a hanging rail. There are wall light points and a radiator. A wide archway and two steps lead down to the living room.

Living Room Two



This fabulous principal reception room is particularly light and bright with two sets of French doors leading out onto the patio/terrace and two double glazed sash windows

overlooking the garden. The centrepiece of the room is a Portuguese limestone fire surround incorporating a Dimplex log-effect remote control electric fire. The room can accommodate plenty of furniture, has various wall light points and two radiators.

Dining Room



This versatile additional reception room is perfect as a formal dining room or could be used as a second sitting room, depending on the occupant's layout requirements. To the front elevation, there are French doors leading out onto the stone paved terrace. The room has various wall light points and two radiators.

First Floor Landing



This has oak balustrading incorporating glazed panels, a large storage cupboard and a radiator.

Fenay Hall, Fenay Lane, Fenay Bridge Huddersfield,

Details



Bedroom One



This large double bedroom is particularly light and bright with front and rear windows. There is built-in furniture incorporating wardrobes with hanging and shelving and bedside drawers. The room has plenty of space for further furniture, two radiators and access to an en suite.

En Suite Bathroom



The updated stylish bathroom has a white three-piece suite comprising a double ended bath with a wall-mounted shower, a rectangular wall-mounted hand basin with storage below and a low-level WC with concealed cistern. There is feature floor and wall tiling, an illuminated mirror, ceiling downlighting and an upright towel heater. To the rear elevation is a window with a New England style shutter.

Bedroom Two



This double bedroom has a side sash window enjoying a pleasant aspect. There are built-in wardrobes, dressing table and drawers and a radiator.

Bedroom Three



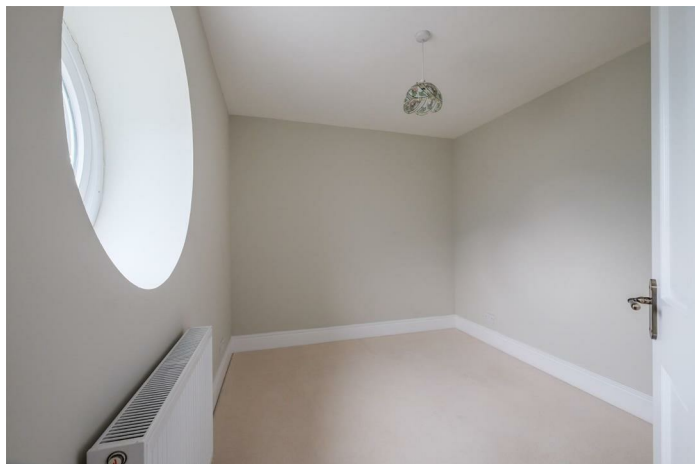
This double bedroom has a similar aspect to bedroom two from its side sash window. The room can accommodate a double bed and furniture and has a radiator.

Fenay Hall, Fenay Lane, Fenay Bridge Huddersfield,

Details



Bedroom Four



This room has a feature circular porthole style window and can accommodate a double bed. There is also a radiator.

Main Bathroom



The stylish shower room has a large walk-in shower cubicle with an overhead waterfall style shower fitting and a hand-held shower attachment, a pedestal wash hand basin and a low-level WC. There is full height tiling around the shower cubicle with half-height tiling to the remaining walls and matching floor tiling. The room has a mirror fronted toiletries cabinet, ceiling downlighting and an upright chrome ladder-style radiator. To the side elevation is a sash window with New England style shutters.

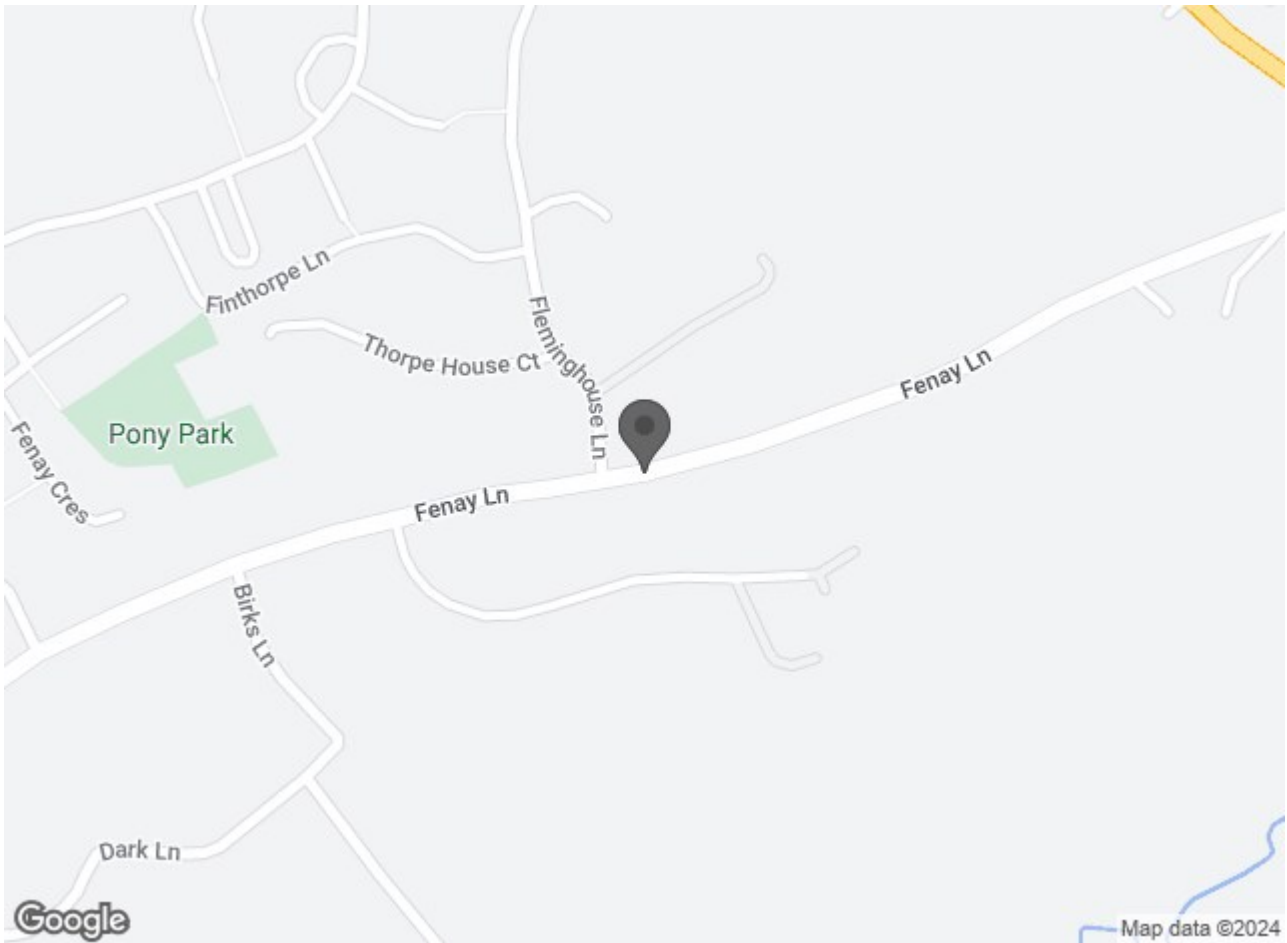
External Details



Accessed from a long sweeping drive from Fenay Lane, the property enjoys a fabulous hamlet setting among other quality period homes in a most picturesque setting within the Woodsome Valley. The property has a double garage with separate individual up-and-over doors and parking in front. An archway leads through to the courtyard where the external entrance door from the hallway can be accessed and there is a metal gate within a stone perimeter wall with an external door into the utility. A wide stone flagged pathway leads to a timber gate that gives access to the garden. The wonderful mature garden has perimeter walling and fencing and a large stone flagged seating area which can be accessed from the doors within the living room and sitting/dining room. Steps with handrails lead down onto a pathway with mature flowerbeds and borders, shaped lawns and a pathway that meanders through the garden. The garden itself can be a real sun trap.

Fenay Hall, Fenay Lane, Fenay Bridge Huddersfield,

Directions



Fenay Hall, Fenay Lane, Fenay Bridge Huddersfield,

Lettings Disclaimer - As part of our application process, fees are not charged for a reference, the tenancy administration and the inventory check, however a holding deposit maybe required. Then if successful this will be deducted from the Rent and Deposit that will be payable before the tenancy is due to start. Please contact us for full details before you make any decision about this property or before you decide to view this property. While every reasonable effort is made to ensure the accuracy of descriptions and content, we should make you aware of the following guidance or limitations. 1 Prospective tenants will be asked to produce identification documentation during the referencing process and we would ask for your co-operation in order that there will be no delay in agreeing a tenancy. 2 These particulars do not constitute part or all of an offer or contract. 3 Photographs and plans are for guidance only and are not necessarily comprehensive. 4 The approximate room sizes are only intended as general guidance. You must verify the dimensions to satisfy yourself of their accuracy. 5 You should make your own enquiries regarding the property, particularly in respect of furnishings to be included/excluded and what parking facilities are available.