



Lloyds Terrace, offers over £160,000

- Nearby parks and green spaces
- Walking and cycling routes
- Ideal for families and couples
- Neutrally decorated terraced house
- Council tax band A
- EPC Rating: D



 3  1  1



About the property

Presenting a neutrally decorated, terraced house for sale, perfect for families and couples alike. This property is situated in a location that boasts green spaces, nearby parks, walking and cycling routes, contributing to a strong local community feel.

With a total of three bedrooms, the property offers ample space for a growing family or for couples seeking extra rooms. The high ceilings throughout the house create an airy and spacious atmosphere, enhancing the sense of comfort.

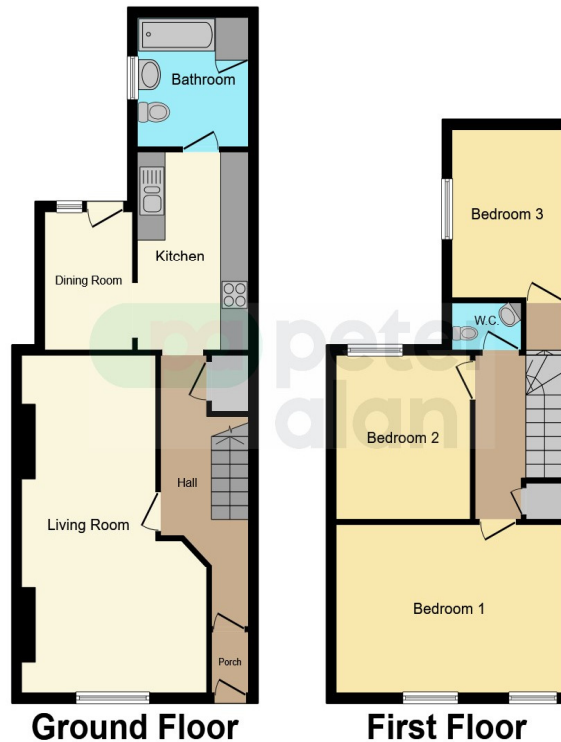
The house features one well-sized reception room, perfect for entertaining guests or spending quality family time. The room is flooded with natural light, making it a bright and inviting space.

The property also benefits from one generously proportioned kitchen, infused with natural light. This kitchen offers enough space for a dining area, providing the perfect setting for family meals or social gatherings. Additionally, the house includes one family bathroom downstairs and an upstairs WC, suitably sized to accommodate the needs of the residents. This house encapsulates a comfortable and agreeable living environment. Its location, combined with its unique features such as high ceilings and ample living spaces, makes it an ideal home for those who value community living and the outdoors.

In summary, this three-bedroom terraced house is a perfect choice for families or couples looking for a home that combines comfort, community and outdoor living.



Floorplan



This floor plan is for illustrative purposes only. It is not drawn to scale. Any measurements, floor areas (including any total floor area), openings and orientation are approximate. No details are guaranteed, they cannot be relied upon for any purpose and they do not form part of any agreement. No liability is taken for any error, omission or misstatement. A party must rely upon its own inspection(s). Powered by www.focalagent.com

Important Information

Note while we endeavour to make our sales details accurate and reliable, if there is any point which is of particular interest to you, please contact the office and we will be pleased to confirm the position for you. We have not personally tested any apparatus, equipment, fixtures, fittings or services and cannot verify they are in working order or fit for their purposes. Nothing in these particulars is intended to indicate that carpets or curtains, furnishings or fittings, electrical goods (whether wired or not). Gas fires or light fittings or any other fixtures not expressly included form part of the property offered for sale. This computer generated Floorplan, if applicable, is intended as a general guide to the layout and design of the property. It is not to scale and should not be relied upon for dimensions. Tenure: We cannot confirm the tenure of the property as we have not had access to the legal documents. The buyer is advised to obtain verification from their solicitor or surveyor.

Peter Alan Limited is registered in England and Wales under company number 2073153, Registered Office is Cumbria House, 16-20 Hockliffe Street, Leighton Buzzard, Bedfordshire, LU7 1GN. VAT Registration Number is 500 2481 05. For activities relating to regulated mortgages and non-investment insurance contracts, Peter Alan Limited is an appointed representative of Connells Limited which is authorised and regulated by the Financial Conduct Authority. Connells Limited's Financial Services Register number is 302221. Most buy-to-let