



Dyffryn Gardens, £310,000

- Council Tax Band - C
- Landscaped Gardens
- Modern Kitchen with Feature Island
- Utility Room
- Modern Decoration Throughout
- Close to Local Amenities
- Off-Road Parking
- EPC Rating: D



3 2 1



About the property

Discover this beautiful semi-detached house in Dyffryn Gardens, Rhydyfelin. Situated in a convenient location close to local amenities. An ideal family home.

Accommodation

Kitchen/Dining Room

21' 7" max x 12' 9" max (6.58m max x 3.89m max)
Matching wall and base units with countertop over, integrated appliances, space for fridge/freezer, sink with drainer, double glazed window to the rear, access into reception room and utility room.

Utility

5' 7" max x 8' 5" max (1.70m max x 2.57m max)
Base units with countertop over, space for washer/dryer, ceiling light.

Bathroom

8' 10" max x 8' 5" max (2.69m max x 2.57m max)
Four-piece suite comprising w/c, tiled-in bath, wash basin and walk in, tiled shower, window to the side, ceiling light.

Reception Room

16' 2" max x 10' 9" max (4.93m max x 3.28m max)
Double glazed window to the front, ceiling light, patio doors leading out into conservatory.



Conservatory

13' 10" max x 9' 4" max (4.22m max x 2.84m max)
Double glazed windows, patio doors leading out to the rear garden.

Stairs To First Floor Landing

Carpeted stairs leading to first floor landing, ceiling light, access into all bedrooms and w/c.

Bedroom 1

14' 7" max x 10' 8" max (4.45m max x 3.25m max)
Master bedroom comprises fitted wardrobes, double glazed window to the front and rear, ceiling light.

Bedroom 2

9' 6" max x 12' 4" max (2.90m max x 3.76m max)
Double glazed window to the front, built-in storage cupboard, ceiling light.

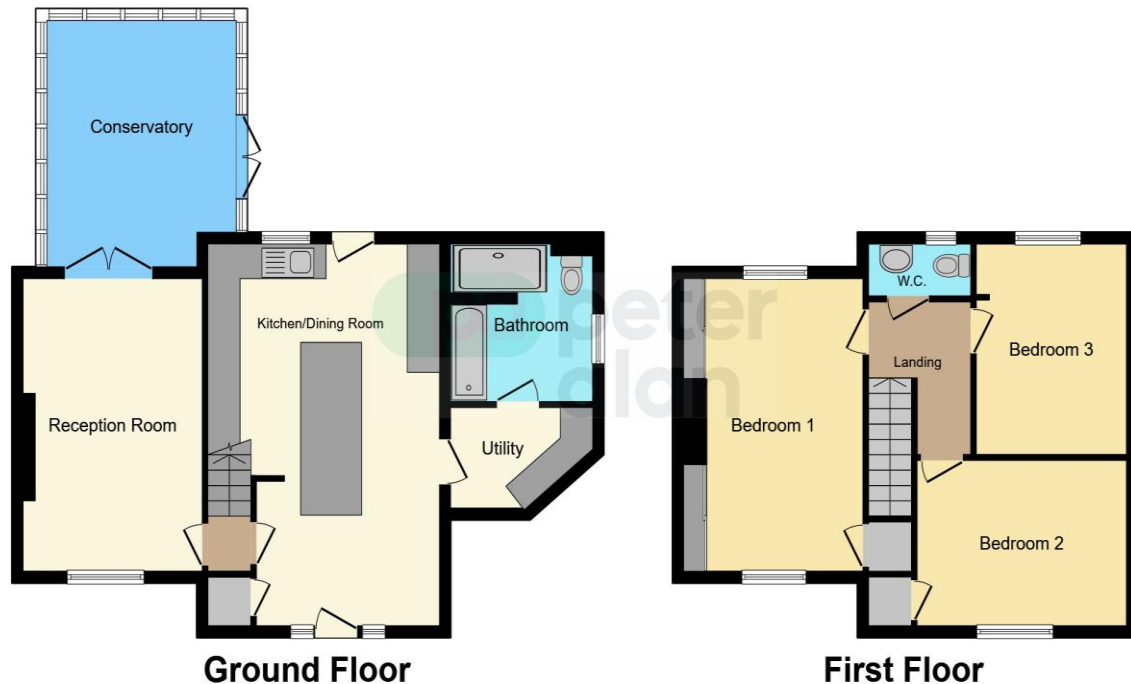
Bedroom 3

11' 9" max x 9' 2" max (3.58m max x 2.79m max)
Double glazed window to the rear, ceiling light.

W/C

2' 10" max x 6' 2" max (0.86m max x 1.88m max)
Two-piece suite comprising w/c and hand wash basin, double glazed window to the rear, ceiling light,

Floorplan



This floor plan is for illustrative purposes only. It is not drawn to scale. Any measurements, floor areas (including any total floor area), openings and orientation are approximate. No details are guaranteed, they cannot be relied upon for any purpose and they do not form part of any agreement. No liability is taken for any error, omission or misstatement. A party must rely upon its own inspection(s). Powered by www.focalagent.com

Important Information

Note while we endeavour to make our sales details accurate and reliable, if there is any point which is of particular interest to you, please contact the office and we will be pleased to confirm the position for you. We have not personally tested any apparatus, equipment, fixtures, fittings or services and cannot verify they are in working order or fit for their purposes. Nothing in these particulars is intended to indicate that carpets or curtains, furnishings or fittings, electrical goods (whether wired or not). Gas fires or light fittings or any other fixtures not expressly included form part of the property offered for sale. This computer generated Floorplan, if applicable, is intended as a general guide to the layout and design of the property. It is not to scale and should not be relied upon for dimensions. Tenure: We cannot confirm the tenure of the property as we have not had access to the legal documents. The buyer is advised to obtain verification from their solicitor or surveyor.

Peter Alan Limited is registered in England and Wales under company number 2073153, Registered Office is Cumbria House, 16-20 Hockliffe Street, Leighton Buzzard, Bedfordshire, LU7 1GN. VAT Registration Number is 500 2481 05. For activities relating to regulated mortgages and non-investment insurance contracts, Peter Alan Limited is an appointed representative of Connells Limited which is authorised and regulated by the Financial Conduct Authority. Connells Limited's Financial Services Register number is 302221. Most buy-to-let