



## St Davids Cottages offers over £135,000

- Recently Renovated
- Three Story
- Great Location
- Flat Rear Garden
- Move In Ready
- EPC Rating: C



3 3 1





## About the property

Newly Renovated Three Bedroom, Three Story House For Sale Located In The Popular Location Of Mountain Ash! This beautifully presented home, offers ample space! Being newly renovated, this offers a home that you can move straight into!

## Accommodation

### Entrance Hallway

Access via brand new composite front door, allowing access to, Living room, Bathroom and stairs to first floor.

### Living Room

22' 4" x 12' 5" ( 6.81m x 3.78m )

Brand new windows to front and rear, A spacious living room with access to stairs leading to the lower level.

### Bathroom

8' 9" x 3' 4" ( 2.67m x 1.02m )

Located off the main hallway, a newly fitted bathroom comprising of - Corner bath with shower over, WC and a chrome towel warmer.

### First Floor

Access to all three bedrooms and shower room. Brand new window to rear.

### Bedroom One

11' 4" x 7' 8" ( 3.45m x 2.34m )

Brand new window to front. A spacious double bedroom that has been renovated to a high standard.



### **Bedroom Two**

9' 6" x 9' 4" ( 2.90m x 2.84m )

Brand new window to rear. A further double bedroom that has also been renovated to a high standard.

### **Bedroom Three**

8' 4" x 6' 9" ( 2.54m x 2.06m )

### **Shower Room**

4' 3" x 2' 4" ( 1.30m x 0.71m )

WC, Walk in wet room with shower mounted on wall, Chrome towel warmer.

### **Lower Level**

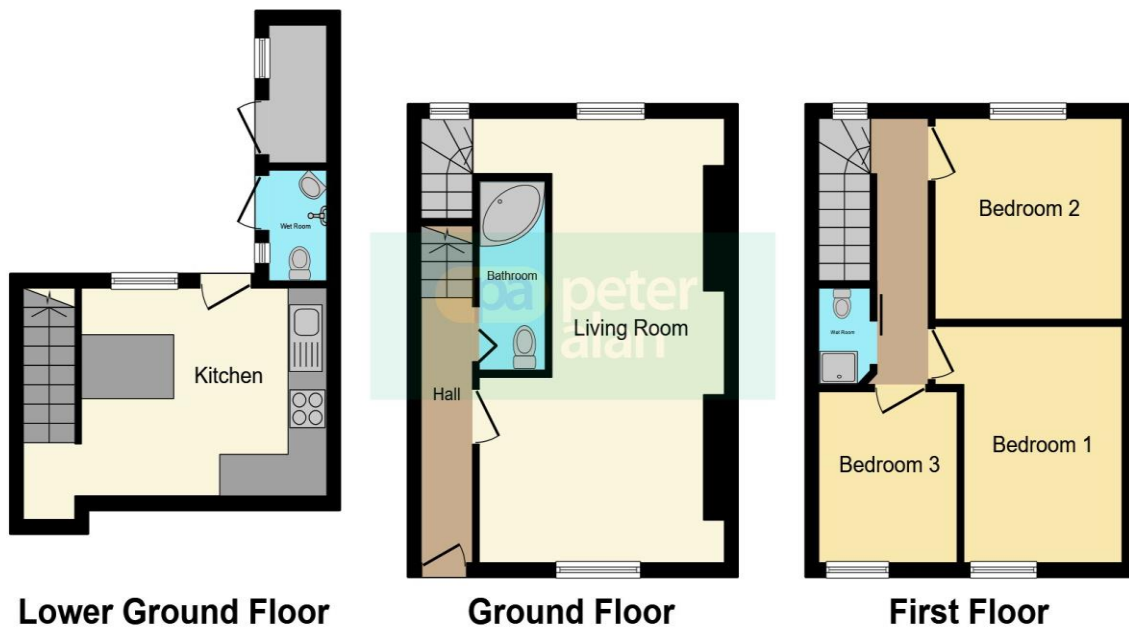
Access to the kitchen/diner.

### **Kitchen/diner**

15' x 10' 8" ( 4.57m x 3.25m )

Newly fitted modern kitchen with island! A bright and airy kitchen/dining space with a larger than average brand new UPVC door to allow access onto the rear garden. A further new window to the rear to allow ample light that creates the feeling of space. Built in storage cupboard housed under stairs.

## Floorplan



This floorplan is for illustrative purposes only and is not drawn to scale. Measurements, floor-areas, openings and orientations are approximate. They should not be relied upon for any purpose and do not form any part of an agreement. No liability is taken for any error or mis-statement. All parties must rely on their own inspections.

## Important Information

Note while we endeavour to make our sales details accurate and reliable, if there is any point which is of particular interest to you, please contact the office and we will be pleased to confirm the position for you. We have not personally tested any apparatus, equipment, fixtures, fittings or services and cannot verify they are in working order or fit for their purposes. Nothing in these particulars is intended to indicate that carpets or curtains, furnishings or fittings, electrical goods (whether wired or not). Gas fires or light fittings or any other fixtures not expressly included form part of the property offered for sale. This computer generated Floorplan, if applicable, is intended as a general guide to the layout and design of the property. It is not to scale and should not be relied upon for dimensions. Tenure: We cannot confirm the tenure of the property as we have not had access to the legal documents. The buyer is advised to obtain verification from their solicitor or surveyor.

Peter Alan Limited is registered in England and Wales under company number 2073153, Registered Office is Cumbria House, 16-20 Hockliffe Street, Leighton Buzzard, Bedfordshire, LU7 1GN. VAT Registration Number is 500 2481 05. For activities relating to regulated mortgages and non-investment insurance contracts, Peter Alan Limited is an appointed representative of Connells Limited which is authorised and regulated by the Financial Conduct Authority. Connells Limited's Financial Services Register number is 302221. Most buy-to-let