



Manor Road

£220,000

- Four bright bedrooms
- Unique kitchen/diner
- Ample culinary space
- Welcoming reception room
- Ideal for first-time buyers
- Convenient local amenities
- EPC Rating: D

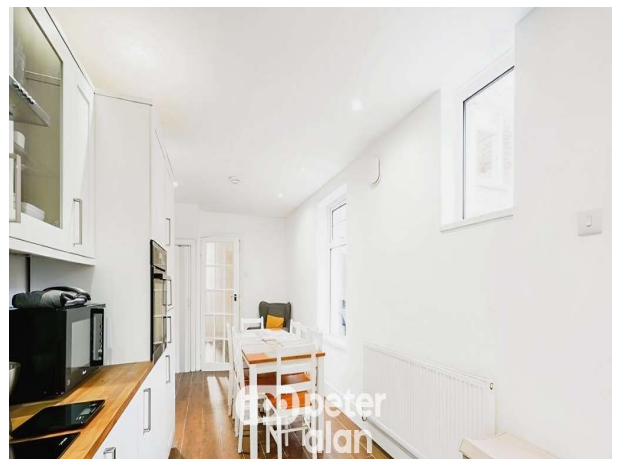


 4
  1
  1



About the property

This immaculate end of terrace house features four bright bedrooms, a welcoming reception room, and a unique kitchen/diner, all located in a sought-after urban area with excellent transport links and local amenities, making it ideal for first-time buyers or families seeking a convenient and vibrant





Accommodation

Living Room

10' 6" max x 10' 4" max (3.20m max x 3.15m max)

Kitchen

23' 1" max x 8' 7" max (7.04m max x 2.62m max)

Dining Room

10' 6" max x 12' 8" max (3.20m max x 3.86m max)

Bedroom One

13' 10" max x 8' 10" max (4.22m max x 2.69m max)

Bedroom Two

10' 8" x 10' 6" (3.25m x 3.20m)

Bedroom Three

10' 7" x 10' 7" (3.23m x 3.23m)

Bedroom Four

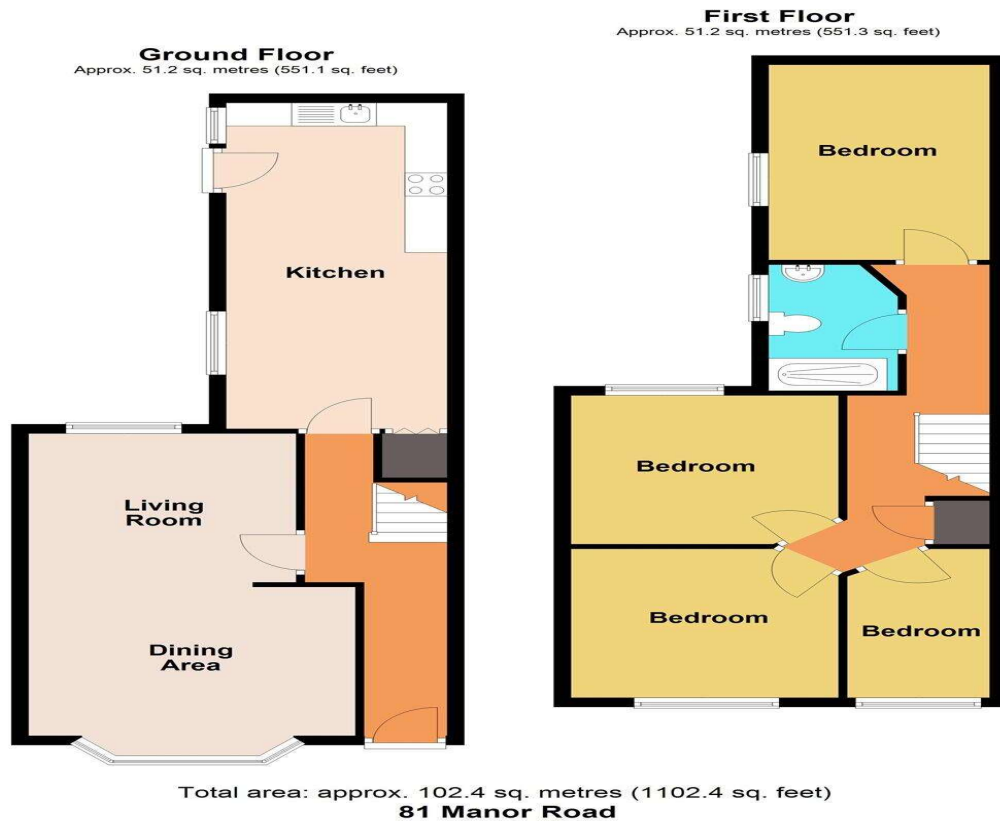
10' 8" x 5' 7" (3.25m x 1.70m)

Bathroom

8' 6" x 5' 8" (2.59m x 1.73m)

Garden

Floorplan



Important Information

Note while we endeavour to make our sales details accurate and reliable, if there is any point which is of particular interest to you, please contact the office and we will be pleased to confirm the position for you. We have not personally tested any apparatus, equipment, fixtures, fittings or services and cannot verify they are in working order or fit for their purposes. Nothing in these particulars is intended to indicate that carpets or curtains, furnishings or fittings, electrical goods (whether wired or not), Gas fires or light fittings or any other fixtures not expressly included form part of the property offered for sale. This computer generated Floorplan, if applicable, is intended as a general guide to the layout and design of the property. It is not to scale and should not be relied upon for dimensions. Tenure: We cannot confirm the tenure of the property as we have not had access to the legal documents. The buyer is advised to obtain verification from their solicitor or surveyor.