



Crown Rise, Llanfrechfa

£190,000

- Council Tax Band - C
- End of terrace house
- Two charming bedrooms
- Peaceful, quiet location
- Convenient public transport links
- Close to local amenities and The Grange Hospital
- Conservatory
- EPC Rating: Awaiting



 2  1  2

 peter
alan

01633 484855
cwmbran@peteralan.co.uk



About the property

This end of terrace house features two reception rooms, two bedrooms, a bright kitchen, and a tranquil garden. A peaceful location with convenient transport links and nearby amenities, making it a perfect suburban retreat for families or professionals.





Accommodation

Entrance Hall

Laminate flooring. Doors to;

Living Room

10' 4" x 15' 7" (3.15m x 4.75m)

Carpet. Front facing window. Sliding doors to;

Conservatory

8' 8" x 8' 8" (2.64m x 2.64m)

Laminate flooring. French doors to garden.

Kitchen

11' 1" x 10' 1" (3.38m x 3.07m)

Wall and floor units. Door to garden. Rear facing window.

Utility

4' 5" x 8' 8" (1.35m x 2.64m)

Additional units for storage. Window.

Landing

Storage cupboard. Carpet. Doors to;

Bedroom One

8' 2" x 16' (2.49m x 4.88m)

Dual aspect windows. Built in storage.

Bedroom Two

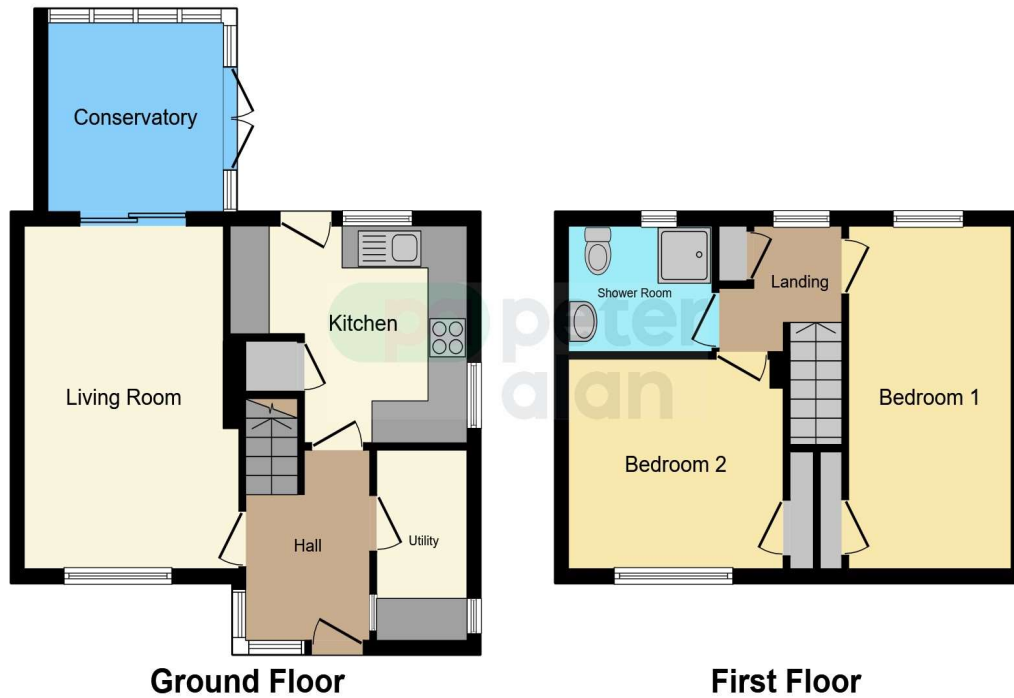
10' 8" x 9' 8" (3.25m x 2.95m)

Front facing window. Built in storage.

Shower Room

WC. Shower cubicle. Sink. Rear facing window.

Floorplan



This floor plan is for illustrative purposes only. It is not drawn to scale. Any measurements, floor areas (including any total floor area), openings and orientation are approximate. No details are guaranteed, they cannot be relied upon for any purpose and they do not form part of any agreement. No liability is taken for any error, omission or misstatement. A party must rely upon its own inspection(s). Powered by www.focalagent.com

Important Information

Note while we endeavour to make our sales details accurate and reliable, if there is any point which is of particular interest to you, please contact the office and we will be pleased to confirm the position for you. We have not personally tested any apparatus, equipment, fixtures, fittings or services and cannot verify they are in working order or fit for their purposes. Nothing in these particulars is intended to indicate that carpets or curtains, furnishings or fittings, electrical goods (whether wired or not), Gas fires or light fittings or any other fixtures not expressly included form part of the property offered for sale. This computer generated Floorplan, if applicable, is intended as a general guide to the layout and design of the property. It is not to scale and should not be relied upon for dimensions. Tenure: We cannot confirm the tenure of the property as we have not had access to the legal documents. The buyer is advised to obtain verification from their solicitor or surveyor.

Peter Alan Limited is registered in England and Wales under company number 2073153. Registered Office is Cumbria House, 16-20 Hockliffe Street, Leighton Buzzard, Bedfordshire, LU7 1GN. VAT Registration Number is 500 2481 05. For activities relating to regulated mortgages and non-investment insurance contracts, Peter Alan Limited is an appointed representative of Connells Limited which is authorised and regulated by the Financial Conduct Authority. Connells Limited's Financial Services Register number is 302221. Most buy-to-let