



## South Street, Sebastopol guide price £140,000 - £150,000

- GUIDE PRICE £140,000 - £150,000
- Close to local shops, award winning chip shop and bus stop
- Low maintenance rear garden
- Good road links to the M4 motorway network in both directions
- Council Tax - Band B
- Need a mortgage? Call us today to find out how we can get you moving!



 2  1  1

 **peter  
alan**

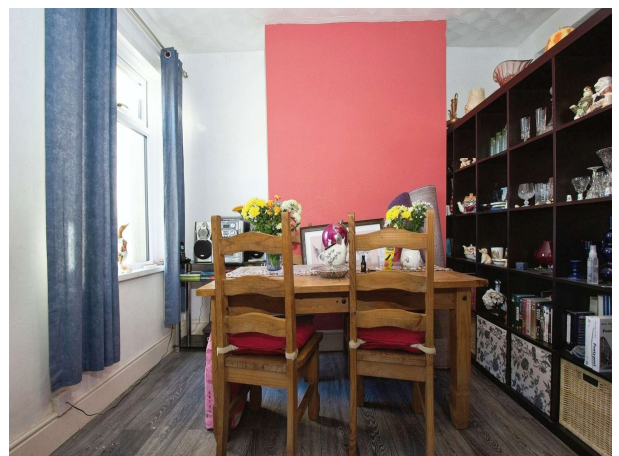
01633 484855  
cwmbran@peteralan.co.uk

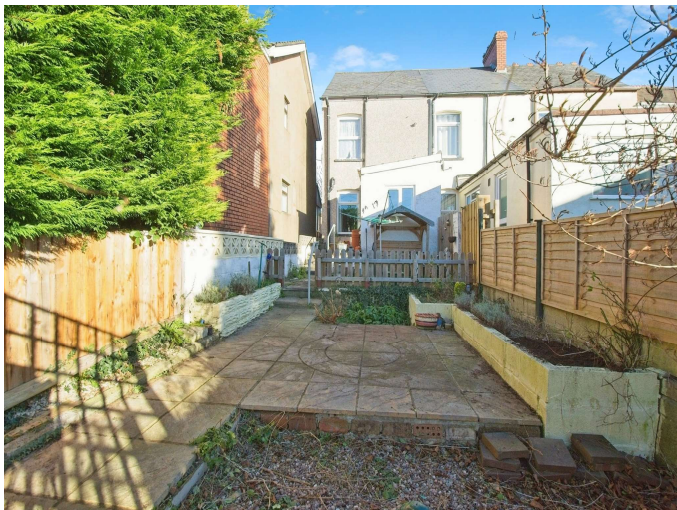


## About the property

\*\* GUIDE PRICE £140,000 - £150,000\*\*

Located in the ever popular area of Sebastopol within walking distance to local shops and amenities. The property is situated within easy commuting distance of Cwmbran, Newport, Cardiff and Bristol with the M4 motorway accessible in both directions.





## Accommodation

### Entrance Porch

Door to the living room. Ceiling light.

### Lounge/ Dining Room

23' 2" x 12' 8" ( 7.06m x 3.86m )

Laminate flooring. Electric fireplace. Front facing window. Understairs storage cupboard. Ceiling lights. Radiator. Rear facing window. Entrance to the kitchen.

### Kitchen

Range of base and wall units. Round stainless steel sink and drainer. Space for white goods. Rear facing windows. Tiled flooring. Ceiling lights. Door to the rear garden.

### Landing

Carpeted flooring. Ceiling lights. Loft access.

### Bedroom One

11' 6" x 10' 6" ( 3.51m x 3.20m )

Laminate flooring. Radiator. Ceiling lights. Built in wardrobes. Front facing windows.

### Bedroom Two

7' 1" x 6' 9" ( 2.16m x 2.06m )

Radiator. Ceiling lights Rear facing windows.

### Family Bathroom

Bath. W.C. Pedestal wash hand basin. Radiator. Ceiling lights. Vinyl flooring. Part tiled walls. Cupboard housing a 'Vaillant' combination boiler. Obscure rear facing window.

### Rear Garden

Patio seating area. Low maintenance garden. Useful storage shed.

## Floorplan



This floorplan is for illustrative purposes only and is not drawn to scale. Measurements, floor-areas, openings and orientations are approximate. They should not be relied upon for any purpose and do not form any part of an agreement. No liability is taken for any error or mis-statement. All parties must rely on their own inspections.

## Important Information

Note while we endeavour to make our sales details accurate and reliable, if there is any point which is of particular interest to you, please contact the office and we will be pleased to confirm the position for you. We have not personally tested any apparatus, equipment, fixtures, fittings or services and cannot verify they are in working order or fit for their purposes. Nothing in these particulars is intended to indicate that carpets or curtains, furnishings or fittings, electrical goods (whether wired or not), Gas fires or light fittings or any other fixtures not expressly included form part of the property offered for sale. This computer generated Floorplan, if applicable, is intended as a general guide to the layout and design of the property. It is not to scale and should not be relied upon for dimensions. Tenure: We cannot confirm the tenure of the property as we have not had access to the legal documents. The buyer is advised to obtain verification from their solicitor or surveyor.

Peter Alan Limited is registered in England and Wales under company number 2073153, Registered Office is Cumbria House, 16-20 Hockliffe Street, Leighton Buzzard, Bedfordshire, LU7 1GN. VAT Registration Number is 500 2481 05. For activities relating to regulated mortgages and non-investment insurance contracts, Peter Alan Limited is an appointed representative of Connells Limited which is authorised and regulated by the Financial Conduct Authority. Connells Limited's Financial Services Register number is 302221. Most buy-to-let