



## Field View Road, Cwmbran

£180,000

- Council Tax Band - C
- Popular location within walking distance of local school
- Offered with no onward chain
- Large living / dining room
- Close to Cwmbran town centre and railway station
- Need a mortgage? Call us today to find out how we can get you moving!
- EPC Rating: D



 3  1  1

 **peter  
alan**

01633 484855  
cwmbran@peteralan.co.uk

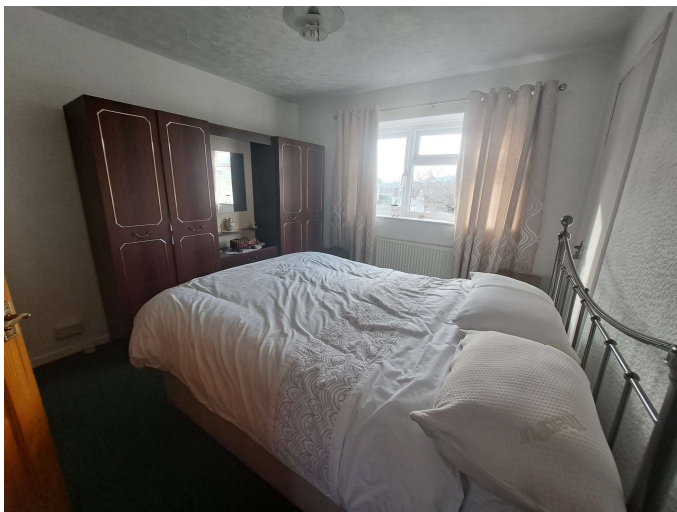




## About the property

Offered with no onward chain and in need of some refurbishment this home located in a sought after location within walking distance of local schools, shop and bus route.





## Accommodation

### Entrance Hall

Stairs to the first floor. Carpeted flooring. Doors to ground floor rooms. Storage room. Under stairs storage cupboard.

### Lounge / Dining Room

18' 10" x 10' ( 5.74m x 3.05m )

Carpeted flooring. Rear facing window. Front Facing window. Two radiators. Gas fire.

### Kitchen

9' 5" x 9' 9" ( 2.87m x 2.97m )

Range of base and wall units with a stainless steel sink and drainer. Space for white goods. Vinyl flooring. Ceiling lights. Part tiled walls. Rear facing window. Larder.

### Landing

Doors to the bedrooms and family bathroom. Carpeted flooring.

### Bedroom One

11' 7" x 10' 2" ( 3.53m x 3.10m )

Carpeted flooring. Front facing window. Ceiling lights. Radiator. Storage cupboard.

### Bedroom Two

11' 1" x 7' 1" ( 3.38m x 2.16m )

Carpeted flooring. Front facing window. Ceiling lights. Radiator.

### Bedroom Three

9' 3" x 6' 10" ( 2.82m x 2.08m )

Carpeted flooring. Rear facing window. Ceiling lights. Radiator. Storage cupboard. Cupboard housing back boiler.

### Family Bathroom

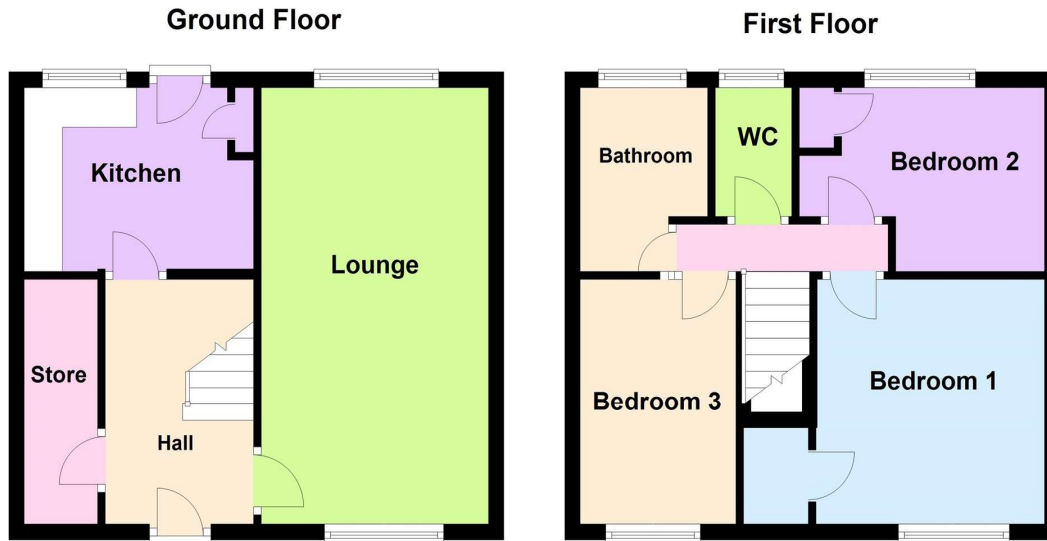
Obscure rear facing window. Pedestal wash hand basin. Bath, Tiled walls. Separate W.C.

### Rear Garden

Low maintenance lawned garden. Useful storage shed.



## Floorplan



this plan is for representation purposes only  
Plan produced using PlanUp.

## Important Information

Note while we endeavour to make our sales details accurate and reliable, if there is any point which is of particular interest to you, please contact the office and we will be pleased to confirm the position for you. We have not personally tested any apparatus, equipment, fixtures, fittings or services and cannot verify they are in working order or fit for their purposes. Nothing in these particulars is intended to indicate that carpets or curtains, furnishings or fittings, electrical goods (whether wired or not), Gas fires or light fittings or any other fixtures not expressly included form part of the property offered for sale. This computer generated Floorplan, if applicable, is intended as a general guide to the layout and design of the property. It is not to scale and should not be relied upon for dimensions. Tenure: We cannot confirm the tenure of the property as we have not had access to the legal documents. The buyer is advised to obtain verification from their solicitor or surveyor.

Peter Alan Limited is registered in England and Wales under company number 2073153. Registered Office is Cumbria House, 16-20 Hockliffe Street, Leighton Buzzard, Bedfordshire, LU7 1GN. VAT Registration Number is 500 2481 05. For activities relating to regulated mortgages and non-investment insurance contracts, Peter Alan Limited is an appointed representative of Connells Limited which is authorised and regulated by the Financial Conduct Authority. Connells Limited's Financial Services Register number is 302221. Most buy-to-let