



Farlays, Coed Eva

£150,000

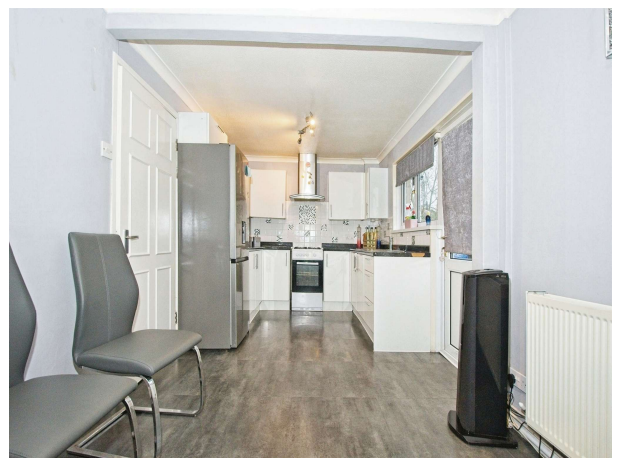
- Four bedroomed terraced property
- Set over four floors
- Spacious lounge
- Kitchen diner with doors out to the garden
- Large rear garden
- A short drive to Cwmbran town centre, railway station and bus station
- COUNCIL TAX BAND B
- Need a mortgage? Call us today to find out how we can get you moving!
- EPC Rating: D





About the property

This 4 bedroom spacious property featuring a good sized garden, located in the popular area of Coed Eva within close proximity Cwmbran shopping centre with its ample amenities, great local schools and within a 10 minute access to the M4 offering easy commuting to Newport, Cardiff & Bristol.





Accommodation

Entrance Hall

Stairs to the first floor. Entrance to the kitchen/diner. Storage cupboard. Ceiling lights. Radiator.

Downstairs W.C / Utility

11' 3" x 5' 9" (3.43m x 1.75m)

Front facing opaque window. Laminate flooring. Ceiling lights. Radiator. Base and wall unit. 'Worcester' combination boiler. Space for white goods. Wash hand basin. W.C.

Kitchen / Diner

21' 3" x 8' 6" (6.48m x 2.59m)

Range of base and wall units with a stainless steel sink and drainer. Space for a cooker with an extractor fan above. Space for a fridge freezer. Laminate flooring and part tiled walls. Ceiling lights. Radiator. Rear facing windows. Door to the rear garden

First Floor Landing

Carpeted flooring. Ceiling lights. Radiator. Doors to Living room and bedroom.

Living Room

14' 8" x 13' 5" (4.47m x 4.09m)

Carpeted flooring. Ceiling lights. Radiator. Electric fireplace. Rear facing window.

Bedroom Three

11' 9" x 8' 6" (3.58m x 2.59m)

Carpeted flooring. Ceiling lights. Radiator. Rear facing window.

Second Floor Landing

Carpeted flooring. Door to bedroom

Bedroom Two

10' 7" x 11' 8" (3.23m x 3.56m)

Carpeted flooring. Ceiling lights. Radiator. Front facing window.

Third Floor Landing

Carpeted flooring. Doors to bedrooms. Storage cupboard. Ceiling lights.

Bedroom One

13' 7" x 8' 6" (4.14m x 2.59m)

Carpeted flooring. Ceiling lights. Radiator. Built in wardrobe. Rear facing window.

Family Bathroom

Vinyl flooring and part tiled walls. Ceiling spot lights. Corner shower unit. Bath. W.C. Wash hand basin with storage underneath. Chrome vertical radiator. Rear facing opaque window.

Bedroom Four

13' 6" x 5' 10" (4.11m x 1.78m)

Carpeted flooring. Ceiling lights. Radiator. Front facing window.

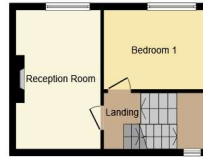
Rear Garden

Mainly laid to lawn with a patio seating area. Useful storage cupboard. Shed. Gated access to the side of the property.

Floorplan



Ground Floor



First Floor



Second Floor



Third Floor

This floorplan is for illustrative purposes only and is not drawn to scale. Measurements, floor-areas, openings and orientations are approximate. They should not be relied upon for any purpose and do not form any part of an agreement. No liability is taken for any error or mis-statement. All parties must rely on their own inspections.

Important Information

Note while we endeavour to make our sales details accurate and reliable, if there is any point which is of particular interest to you, please contact the office and we will be pleased to confirm the position for you. We have not personally tested any apparatus, equipment, fixtures, fittings or services and cannot verify they are in working order or fit for their purposes. Nothing in these particulars is intended to indicate that carpets or curtains, furnishings or fittings, electrical goods (whether wired or not), Gas fires or light fittings or any other fixtures not expressly included form part of the property offered for sale. This computer generated Floorplan, if applicable, is intended as a general guide to the layout and design of the property. It is not to scale and should not be relied upon for dimensions. Tenure: We cannot confirm the tenure of the property as we have not had access to the legal documents. The buyer is advised to obtain verification from their solicitor or surveyor.

Peter Alan Limited is registered in England and Wales under company number 2073153. Registered Office is Cumbria House, 16-20 Hockliffe Street, Leighton Buzzard, Bedfordshire, LU7 1GN. VAT Registration Number is 500 2481 05. For activities relating to regulated mortgages and non-investment insurance contracts, Peter Alan Limited is an appointed representative of Connells Limited which is authorised and regulated by the Financial Conduct Authority. Connells Limited's Financial Services Register number is 302221. Most buy-to-let