



**Cowslip Drive,  
Penarth CF64 2RH**

- EPC Rating: C
- IDEAL FIRST TIME BUY / FAMILY HOME
- CLOSE TO PENARTH MARINA, PENARTH TOWN CENTRE, TRAIN STATION, SUPERMARKETS, LINK ROADS TO M4
- NO ONGOING CHAIN
- Council Tax Band - D







## About The Property

IDEAL FIRST TIME BUY / FAMILY HOME -  
 Comprising of hallway, living room, kitchen/ diner,  
 additional reception room and ground floor shower  
 room, landing, 3 bedrooms, family bathroom,  
 enclosed rear garden, driveway to front.

### Lounge

15' 6" x 14' 4" ( 4.72m x 4.37m )

### Dining Room

15' 5" x 10' 5" ( 4.70m x 3.17m )

### Reception Room

16' x 6' 6" ( 4.88m x 1.98m )

### Kitchen

11' 8" x 9' ( 3.56m x 2.74m )

### Landing

### Bedroom One

13' 2" x 9' 3" ( 4.01m x 2.82m )

### Bedroom Two

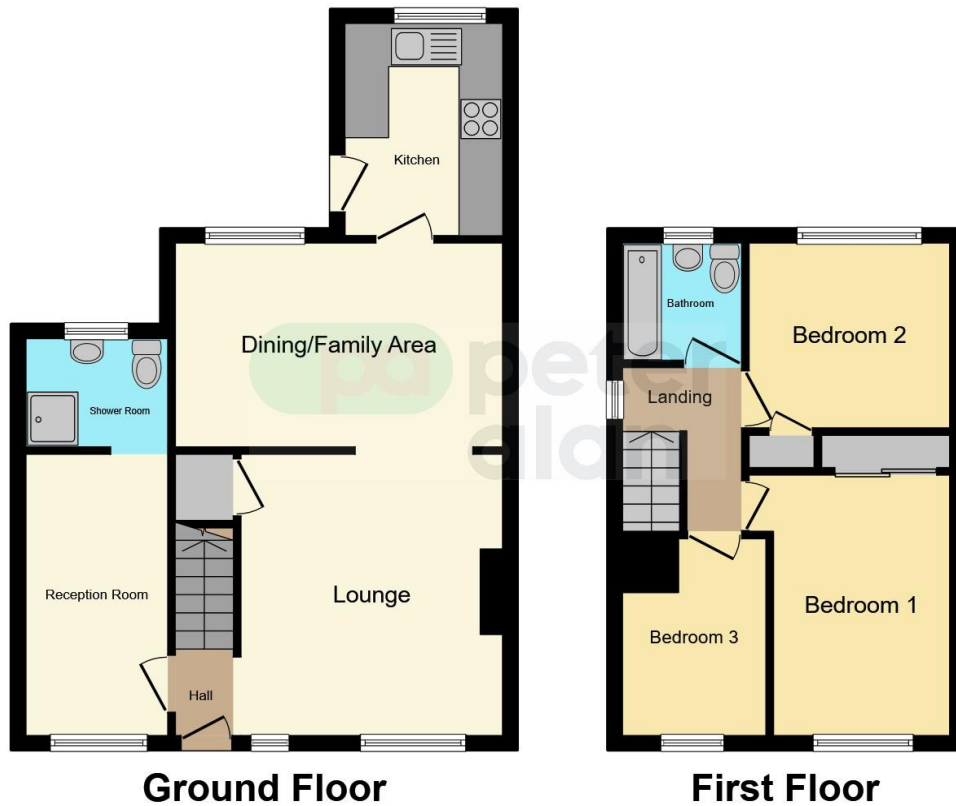
9' 3" x 9' 2" ( 2.82m x 2.79m )

### Bedroom Three

10' 4" x 9' 6" ( 3.15m x 2.90m )







This floor plan is for illustrative purposes only. It is not drawn to scale. Any measurements, floor areas (including any total floor area), openings and orientation are approximate. No details are guaranteed, they cannot be relied upon for any purpose and they do not form part of any agreement. No liability is taken for any error, omission or misstatement. A party must rely upon its own inspection(s). Powered by [www.focalagent.com](http://www.focalagent.com)

#### Important Information

Note while we endeavour to make our sales details accurate and reliable, if there is any point which is of particular interest to you, please contact the office and we will be pleased to confirm the position for you. We have not personally tested any apparatus, equipment, fixtures, fittings or services and cannot verify they are in working order or fit for their purposes. Nothing in these particulars is intended to indicate that carpets or curtains, furnishings or fittings, electrical goods (whether wired or not). Gas fires or light fittings or any other fixtures not expressly included form part of the property offered for sale. This computer generated Floorplan, if applicable, is intended as a general guide to the layout and design of the property. It is not to scale and should not be relied upon for dimensions. Tenure: We cannot confirm the tenure of the property as we have not had access to the legal documents. The buyer is advised to obtain verification from their solicitor or surveyor.  
Property Ref: PTH304304 - 0009

