



## Uplands Crescent, £340,000

- Semi Detached House
- Three Bedrooms
- Two Reception Rooms
- Most Generous Size Corner Plot
- Driveway & Detached Garage
- EPC Rating: D



 3  1  2





## About the property

Located on a corner plot is this semi detached family home located in Llandough. Comprising of an entrance porch, hallway, lounge, dining room, kitchen, landing, shower room and three bedrooms. Benefits include double glazing, gas fired central heating, front & rear gardens and detached garage.

## Accommodation

### Entered

Via a UPVC double glazed entrance door into:

### Porch

Tiled floor. Cupboard housing gas meter. Secondary door opens into:

### Hallway

Doors leading to lounge & kitchen. Stairs rising to first floor  
Parquet flooring. UPVC double glazed window to side.



Radiator. Coved ceiling. Telephone point. Wall mounted thermostatic temperature control.

## Lounge

16' 4" x 11' 3" ( 4.98m x 3.43m )

UPVC double glazed window to front. Power points. Coved ceiling. Archway opens to:

## Dining Room

9' max x 9' 6" max ( 2.74m max x 2.90m max )

UPVC double glazed windows to rear. Radiator. Power point. Coved ceiling. Doorway leads to:

## Kitchen

12' max x 8' ( 3.66m max x 2.44m )

Fitted with a range of wall and base level units with complementary work tops. Stainless steel sink & drainer. Electric point for cooker. Cooker hood. Plumbing for automatic washing machine. Ceramic tiled splash backs. Space for fridge. Radiator. Ceramic tiled floor. UPVC double glazed window to rear. UPVC double glazed door opens to rear garden.

## Landing

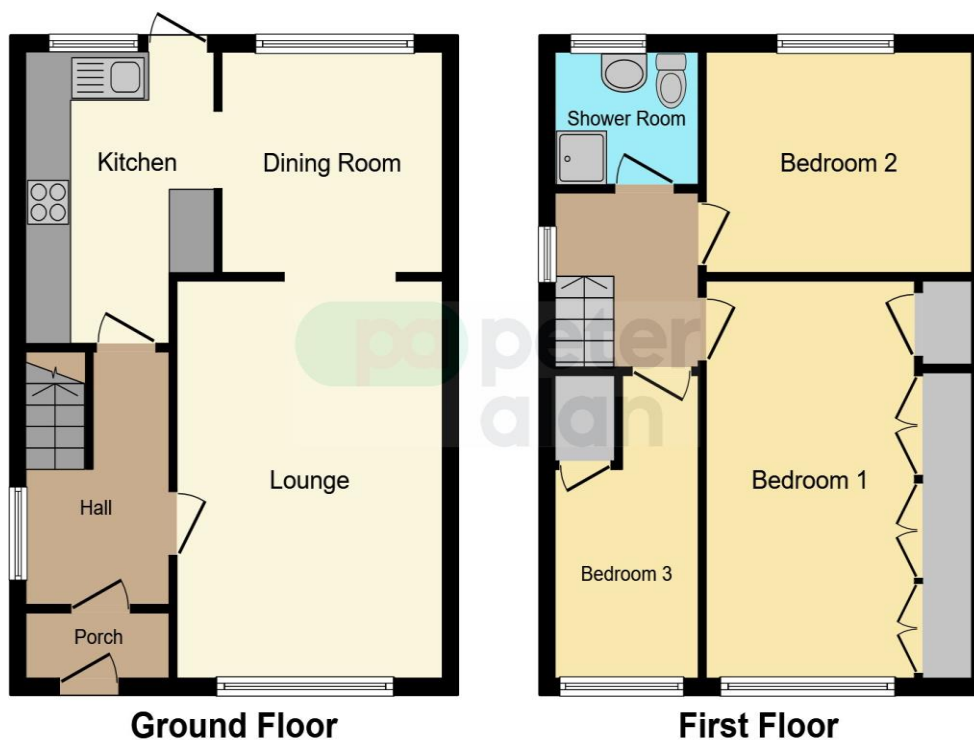
Doors lead to all bedrooms and shower room. Landing storage cupboard. UPVC double glazed window to side. Loft access hatch.



02920 703799

penarth@peteralan.co.uk

## Floorplan



This floor plan is for illustrative purposes only. It is not drawn to scale. Any measurements, floor areas (including any total floor area), openings and orientation are approximate. No details are guaranteed, they cannot be relied upon for any purpose and they do not form part of any agreement. No liability is taken for any error, omission or misstatement. A party must rely upon its own inspection(s). Powered by [www.focalagent.com](http://www.focalagent.com)

## Important Information

Note while we endeavour to make our sales details accurate and reliable, if there is any point which is of particular interest to you, please contact the office and we will be pleased to confirm the position for you. We have not personally tested any apparatus, equipment, fixtures, fittings or services and cannot verify they are in working order or fit for their purposes. Nothing in these particulars is intended to indicate that carpets or curtains, furnishings or fittings, electrical goods (whether wired or not). Gas fires or light fittings or any other fixtures not expressly included form part of the property offered for sale. This computer generated Floorplan, if applicable, is intended as a general guide to the layout and design of the property. It is not to scale and should not be relied upon for dimensions. Tenure: We cannot confirm the tenure of the property as we have not had access to the legal documents. The buyer is advised to obtain verification from their solicitor or surveyor.

Peter Alan Limited is registered in England and Wales under company number 2073153, Registered Office is Cumbria House, 16-20 Hockliffe Street, Leighton Buzzard, Bedfordshire, LU7 1GN. VAT Registration Number is 500 2481 05. For activities relating to regulated mortgages and non-investment insurance contracts, Peter Alan Limited is an appointed representative of Connells Limited which is authorised and regulated by the Financial Conduct Authority. Connells Limited's Financial Services Register number is 302221. Most buy-to-let