



Claremont Place, CT1
Canterbury | Kent

 Sandersons



Claremont Place, CT1

CT1 3SU

£1,520 pcm

To Let

Academic year 2021/2022 - Four bedroom student property all with double beds - Funky modern design throughout - £1,520 pcm - Free on street parking

- Bright and funky 4 bedroom student property
- All bedrooms furnished with double beds
- £1,520 rent per month
- Free on street parking
- Good location for CCU and UKC students
- Decorated to a high standard throughout

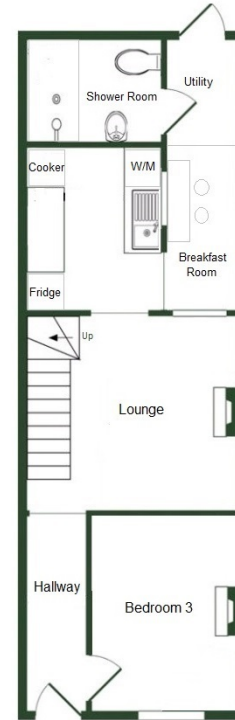


The Property

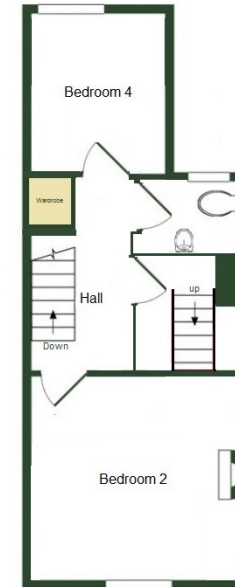
Academic year 2021/2022. Funky four bedroom student property set over three floors located just outside the city walls ideal for both UKC and CCU students. This bright and modern terraced house is decorated to a very high standard with unique furnishings and décor throughout. On the ground floor is the first of the bedrooms along with the cosy living area, kitchen, separate breakfast room and bathroom. The kitchen is inclusive of a freestanding electric oven with four burner hob, a fridge freezer and a washing machine. During the summer months a shower cubicle will be fitted in the bathroom and the floor will be retiled. On the second floor are a further 2 bedrooms and WC; the fourth bedroom is located in the top of the house which also has extra storage on the below floor. There is an enclosed back garden, gas central heating and ample free on street parking available in the immediate area.

Location

Wincheap is a good location for both Canterbury Christ Church University and The University of Kent. The North Holmes Road Campus and Augustine House student centre are 0.5 miles away. Canterbury has a large, modern shopping complex in Whitefriars and an array of eclectic shops in the King's Mile. The main bus station is next to shopping complex. An array of pubs, restaurants and clubs populate the city. Local train services are operated by South Eastern Rail. Canterbury West station offers a fast link to London St Pancras.



Ground Floor



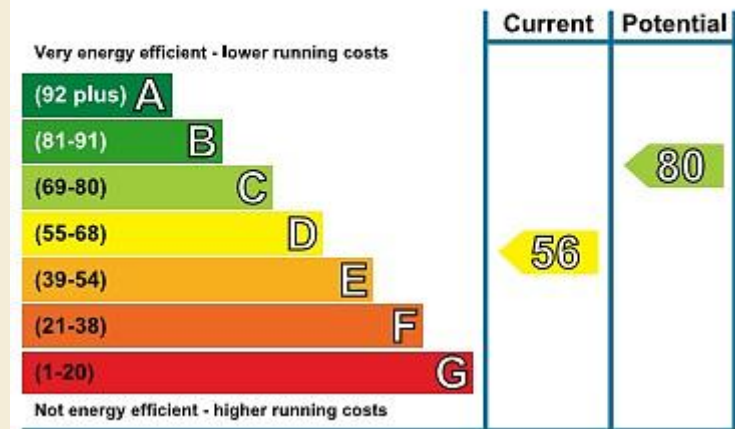
First Floor



Second Floor



Energy Efficiency Rating



Viewing strictly by appointment through Sandersons UK

Canterbury branch
01227 784 784

canterbury@sandersonsuk.com
26a Castle Street
Canterbury
Kent
CT1 2QD



www.sandersonsuk.com
twitter.com/sandersonsuk
facebook.com/sandersonsuk

IMPORTANT NOTICE Sandersons UK for themselves and for the Vendors of this property, whose agents they are, give notice that:

1. The particulars are intended to give a fair and substantially correct overall description for the guidance of intending purchasers and do not constitute part of an offer or contract. Prospective purchasers and lessees ought to seek their own professional advice.
2. All descriptions, dimensions, areas, reference to condition and necessary permissions for use and occupation and other details are given in good faith, and are believed to be correct, but any intending purchasers should not rely on them as statements or representations of fact, but must satisfy themselves by inspection or otherwise as to the correctness of each of them.
3. No person in the employment of Sandersons UK has any authority to make or give any representations or warranty whatever in relation to this property on behalf of Sandersons UK, nor enter into any contract on behalf of the Vendor.
4. No responsibility can be accepted for any expenses incurred by intending purchasers in inspecting properties which have been sold, let or withdrawn. All measurements are approximate.