



## Detached Garage and Cellar Storage

### Garage to the Rear

466 Victoria Avenue, Manchester, M9 0PL

Distribution, Yard

**TO LET**

- Detached Garage
- Cellar Storage
- Located a few minutes from the M60
- Ideal Storage for a local builder or trade

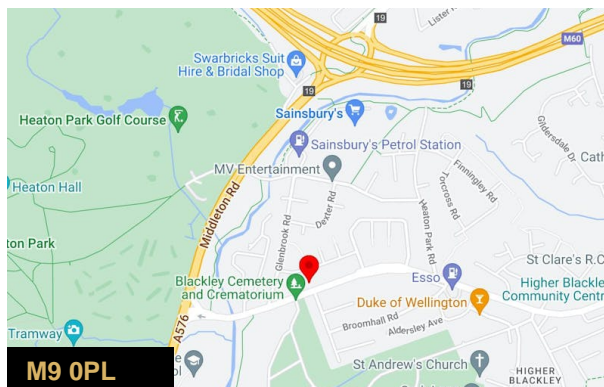
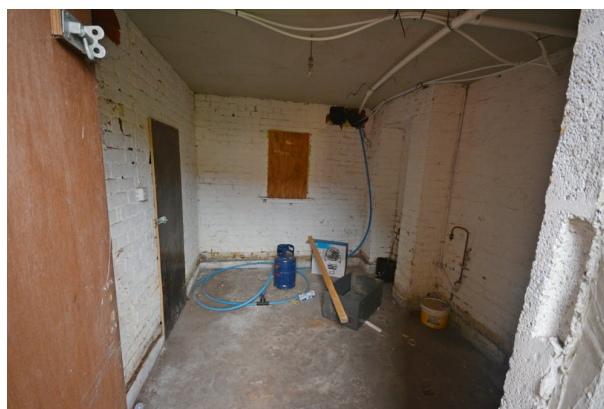
# Garage to the Rear, 466 Victoria Avenue, Manchester, M9 0PL

## Summary

<b>Rent</b>	£200 per month
<b>Business Rates</b>	Upon Enquiry
<b>EPC Rating</b>	Upon enquiry

## Description

Detached garage and basement storage located just of Victoria Avenue, within a short drive of Junction 19 of the M60. Located to the rear of a row of shops. Would prove ideal storage for a local builder or tradesman.



## Viewing & Further Information



**Simon Harvey**

0161 764 4440

[commercial@pearsonferrier.co.uk](mailto:commercial@pearsonferrier.co.uk)

**More properties @ [pearsonferrier.co.uk](http://pearsonferrier.co.uk)**