



**AVAILABLE NOW - Secure industrial/storage premises in Bury,
Manchester. 1,000–2,000 sq. ft.**

Lowercroft Business Park

Lowercroft, Bury, BL8 3PA

Industrial / Warehouse

TO LET

1,000 to 2,000 sq ft

(92.90 to 185.81 sq m)

Where your business belongs

Lowercroft Business Park, Lowercroft, Bury, BL8 3PA

Summary

Available Size	1,000 to 2,000 sq ft
Rent	£12,948 per annum From
Business Rates	Upon Enquiry
VAT	Not applicable
EPC Rating	Upon enquiry

Description

AVAILABLE NOW - Secure industrial/storage premises in Bury, Manchester.

We are pleased to advertise the opportunity to join Bury's most lucrative traders community at Lowercroft Business Park.

The units available range in size from 1000sq.ft. to 2000sq.ft. and are complete with new electrical fixtures and fittings and Grade A aluminium roller shutters. The units would suit a wide range of uses and already comprises an array of tenants including joinery workshops, packaging and distribution, appliance repair centres, tool storage, textiles manufacturing and processing and many more. Units with ancillary office and mezzanine space are also available.

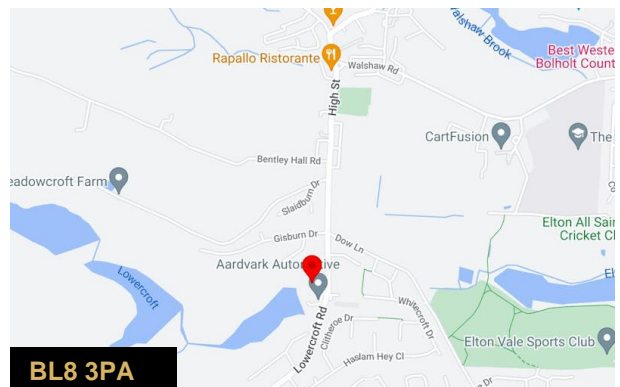
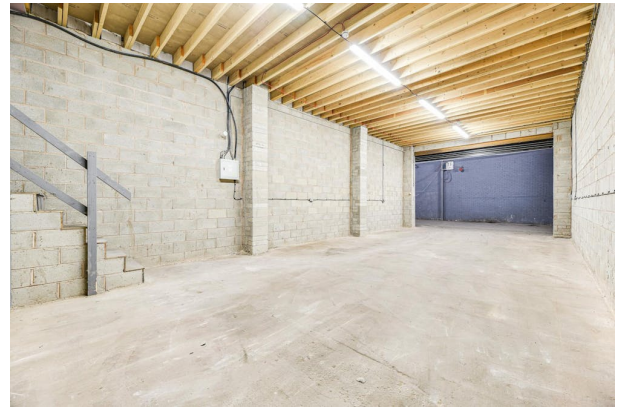
At Lowercroft, new tenants can thrive in a trading community filled with a vast range of businesses and operations. All units on the Business Park, regardless of their price and location are ensured the same level of security by way of 24/7 CCTV surveillance and monitoring, on-site security, security gates and night time security checks.

Lowercroft Business Park is located under 10 minutes drive away from the M66, no more than a further 5 minute connection from the M60 and M62, meaning there is excellent access for deliveries, imports and exports around Greater Manchester and nationwide.

Options are available upon request for office accommodation within the nearby area. Options are also available to occupy smaller self-storage units and storage shipping containers.

Business rates and VAT are not applicable.

Service charge may be applicable.



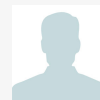
Viewing & Further Information



Simon Harvey

0161 764 4440

commercial@pearsonferrier.co.uk



Stuart Pearson

07956405651

stuart.pearson@pearsonferrier.co.uk

More properties @ [pearsonferrier.co.uk](https://www.pearsonferrier.co.uk)